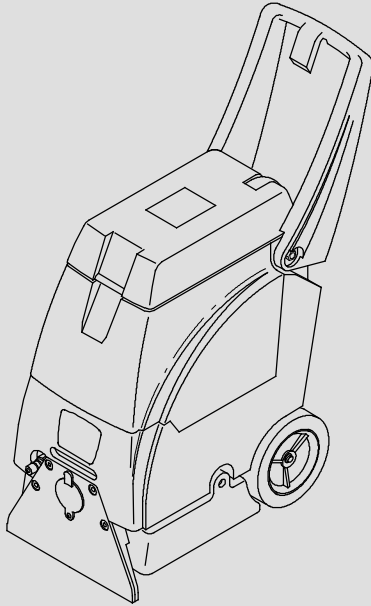




EX-SC-412 EX-SC-1530

Portable Carpet Extractor

Parts Manual



Model Part No.:

- 9007478 - EX-SC-412 (120V)
- 9007488 - EX-SC-1530 (230V)
- 9007820 - EX-SC-1530 (100V)
- 9007492 - EX-SC-1530 (220V)
- 9007818 - EX-SC-1530 (240V/50hz) EMC



www.tennantco.com

NOBLES

www.nobles.com

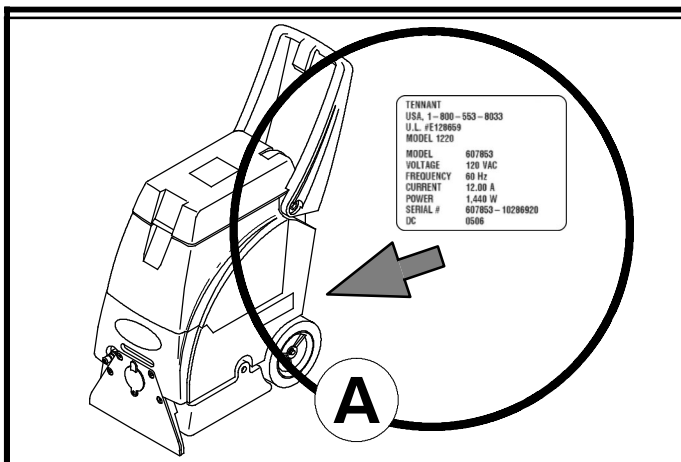


To view, print or download
the latest manual, visit:

www.tennantco.com/manuals

9007441
Rev. 04 (07-2019)





Ref	Part No.	Serial Number	Description	Qty.
1	82681	(000000-)	Bracket Wldt, Lpg Mount	1
▽ 2	63810	(000000-)	Latch Assy, Lpg Tank Mtg, W/Nut	4
▲ 3	51839	(000000-)	Nut Adjustable, Lpg Tank Mtg	2
4	49263	(000000-)	Tie, Cable	3
	82556	(000000- 001039)	Bracket, Vaporizer	1
	54930	(000000-)	Vaporizer	1

HOW TO ORDER PARTS - See diagram above

Only use TENNANT Company supplied or equivalent parts. Parts and supplies may be ordered online, by phone, by fax or by mail.

Follow the steps below to ensure prompt delivery.

1. (A) Identify the machine model.
2. (A) Identify the machine serial number from the data label.
3. (B) Ensure the proper serial number is used from the parts list.
4. Identify the part number and quantity.
Do not order by page or reference numbers.
5. Provide your name, company name, customer ID number, billing and shipping address, phone number and purchase order number.
6. Provide detail shipping instructions.

- (C) ▽ - identifies an assembly
 ▲ - identifies parts included in assembly

Please fill out at time of installation for future reference.

Model No. - _____

Serial No. - _____

Machine Options - _____

Sales Rep. - _____

Sales Rep. phone no. - _____

Customer ID Number - _____

Installation Date - _____

Tennant Company

PO Box 1452
 Minneapolis, MN 55440
 Phone: (800) 553-8033

www.tennantco.com
 www.nobles.com

Specifications and parts are subject to change without notice.

Copyright © 2010-2019 TENNANT Company, Printed in U.S.A.

CN	<p>如何订购部件 - 参见下表</p> <p>仅使用 TENNANT 公司提供的或同等部件。部件和供应可以在线订购，通过电话、传真或邮件订购。请遵循下面的步骤确保及时交付。</p> <ol style="list-style-type: none"> 1. (A) 确定机器型号。 2. (B) 从数据标签确定机器序列号。 3. (C) 确保使用部件列表中的正确序列号。 4. 确定部件号和数量。 不要按页面或参考编号订购。 5. 提供您的姓名、公司名称、客户 ID 号、付帐和送货地址、电话号码和采购单编号。 6. 提供详细的送货说明。 <hr/> <p>(D) ▽ - 确定组件 ▲ - 确定组件中包含的组件</p>	<p>请在安装时填写供未来参考。</p> <p>型号 - _____</p> <p>序列号 - _____</p> <p>机器选项 - _____</p> <p>销售代表 - _____</p> <p>销售代表电话号码 - _____</p> <p>客户 ID 编号 - _____</p> <p>安装日期 - _____</p>
-----------	--	--

ES	<p>CÓMO SOLICITAR PIEZAS - Consulte el diagrama anterior.</p> <p>Utilice sólo las piezas suministradas por TENNANT Company o piezas equivalentes. Puede solicitar las piezas a través de internet, por teléfono, por fax o por correo.</p> <p>Siga los siguientes pasos para que la entrega sea rápida.</p> <ol style="list-style-type: none"> 1. (A) Indique el modelo de máquina. 2. (B) Indique el número de serie de la etiqueta de datos. 3. (C) Asegúrese de que indica el número de serie correcto de la lista de piezas. 4. Indique la cantidad y el número de la pieza. No realice el pedido indicando el número de página o el de referencia. 5. Incluya su nombre, el nombre de la empresa, el ID de cliente, las direcciones de envío y facturación, el número de teléfono y el número del pedido de compra. 6. Facilite instrucciones de envío. <hr/> <p>(D) ▽ - identifica un conjunto ▲ - identifica piezas de un conjunto</p>	<p>Rellene estos datos cuando realice la instalación para utilizarlos como referencia en el futuro.</p> <p>Nº modelo - _____</p> <p>Nº serie - _____</p> <p>Opciones de la máquina - _____</p> <p>Vendedor - _____</p> <p>Nº teléfono vendedor - _____</p> <p>Nº cliente - _____</p> <p>Fecha de instalación - _____</p>
-----------	--	---

FR	<p>COMMENT COMMANDER DES PIÈCES DÉTACHÉES - Voir le schéma ci-dessus.</p> <p>Utilisez uniquement des pièces fournies par la société TENNANT ou équivalentes. Les pièces et fournitures peuvent être commandées en ligne, par téléphone, fax, ou par courrier.</p> <p>Suivez les étapes ci-dessous pour assurer une livraison rapide.</p> <ol style="list-style-type: none"> 1. (A) Identifiez le modèle de la machine. 2. (B) Identifiez le numéro de série de la machine, à partir de l'étiquette signalétique. 3. (C) Assurez-vous que le numéro de série correct est utilisé à partir de la liste de pièces détachées. 4. Identifiez le numéro de pièce et la quantité. Ne commandez pas par page ou numéros de référence. 5. Fournissez votre nom, le nom de votre société, votre numéro d'identification de client, l'adresse de facturation et d'expédition, le numéro de téléphone et le numéro du bon de commande. 6. Fournissez des instructions d'expédition détaillées. <hr/> <p>(D) ▽ - identifie un assemblage ▲ - identifie les pièces composant l'assemblage</p>	<p>A remplir au moment de l'installation à titre de référence.</p> <p>Nº du modèle - _____</p> <p>Nº de série - _____</p> <p>Options de la machine - _____</p> <p>Agent commercial - _____</p> <p>Nº tél. de l'agent commercial - _____</p> <p>Numéro d'identification client - _____</p> <p>Date d'installation - _____</p>
-----------	--	---

JP	<p>パーツの発注方法 ? 上記の図を参照してください</p> <p>TENNANT社製のパーツまたは同等品のみをお使いください。パーツやサプライ品のご注文は、オンライン、電話、FAX、または手紙でお願いいたします。確実にお届けできるように、以下の情報お知らせください。</p> <ol style="list-style-type: none"> 1. (A) 製品のモデル名をお知らせください。 2. (B) 製品のデータラベルに印刷されているシリアル番号をお知らせください。 3. (G) パーツリストを参照して、シリアル番号が正しいかご確認ください。 4. パーツ番号と数量をお知らせください。マニュアル/カタログのページ番号や参照番号でのご注文はご遠慮ください。 5. お客様のお名前、会社名、顧客ID番号、請求/発送先住所、電話番号、注文書番号をお知らせください。 6. 発送に関するご希望があれば、明記してください。 <hr/> <p>(D) ▽ - アセンブリを示します ▲ - アセンブリに含まれるパーツを示します</p>	<p>後日確認できるように、設置時に記入してください。</p> <p>モデルNo. - _____</p> <p>シリアルNo. - _____</p> <p>製品のオプション - _____</p> <p>販売代理店 - _____</p> <p>販売代理店の電話番号 - _____</p> <p>顧客ID番号 - _____</p> <p>設置日 - _____</p>
-----------	---	---

STANDARD PARTS

GENERAL RECOMMENDED MAINTENANCE
ITEMS 6

SOLUTION TANK GROUP - 1 of 2 8

SOLUTION TANK GROUP - 2 of 2 10

RECOVERY TANK GROUP 12

HANDLE GROUP 14

REAR PANEL GROUP 16

BRUSH BASE GROUP 18

SOLUTION GROUP 20

WIRING DIAGRAM, 100V/120V 22

LADDER DIAGRAM, 100V/120V 23

WIRING DIAGRAM, 220V/230V 24

LADDER DIAGRAM, 220V/230V 25

WIRING DIAGRAM, 240V EMC 26

LADDER DIAGRAM, 240V EMC 27

OPTIONS

HAND TOOL GROUP (NEW STYLE) 28

HAND TOOL GROUP (OLD STYLE) 29

RECOMMENDED MAINTENANCE ITEMS

GENERAL RECOMMENDED MAINTENANCE ITEMS

Ref.	Part No.	Serial Number	Description	Qty.
	611823	(00000000-) Screen, Strainer	1
	607276	(00000000-) Hose, Vacuum, 1.50id X 021.6l,1- E90 Cuff	1
	607277	(00000000-) Wheel, 08.0d 1.75w, Smooth Gray	2
▽	607179	(00000000-) Fan, Vacuum, 5.7d, 120vac, 2 Stage [Qbp] (100V/120V)	1
▲	190155	(00000000-) Brush, Carbon [130402,18,14, 1pick=1pkg]	1
▽	607281	(00000000-) Fan, Vacuum, 5.7d, 240vac, 2 Stage [Qbp] (220V/230V/240V)	1
▲	190158	(00000000-) Brush, Carbon [130403, 1pick=1pkg]	1
	100143	(00000000-) Gasket, Motor, Vacuum, 5.7	1
	607183	(00000000-) Seal, Cap, Vacuum Tool [607170]	1
	607275	(00000000-) Hose, Vacuum, 1.50id X 039.1l, 2cuff,E90 (Solution Tank)	1
	608334	(00000000-) Hose, Drain, 0.50id X 20.0l, Vyl [5100] (Solution Tank)	1
	607275	(00000000-) Hose, Vacuum, 1.50id X 039.1l, 2cuff,E90 (Recovery Tank - Left Side)	1
	607276	(00000000-) Hose, Vacuum, 1.50id X 021.6l,1- E90 Cuff (Recovery Tank - Right Side)	1
	210234	(00000000-) Gasket, .18, 1.18id 2.50od	2
	607290	(00000000-) Gasket, Ring, Bag, .188th, Neo	1
	609531	(00000000-) Float, Shutoff, Vacuum, 1- Ball, 1.50d	1
	102569	(00000000-) Grip, Handle, Foam, Blk .75id X 4.25l (Recovery Tank)	1
	607315	(00000000-) Lever, Handle, Pivot [Camlock]	1
	230920.BK	(00000000-) Hook, Cord, Blk [Boss]	2
	130166	(00000000-) Grip, Cord, Strainrelief Pg- 11 W/Nut Bk	1
	130222	(00000000-) Cord, 16ga /3, 25ft Yel [Sjto] (100V/120V)	1
	600324	(00000000-) Cord, Power, 1.5mm2/3 Blk [15meter Euro] (220V/230V)	1
	1038777	(10354924-) Cord, Power, 1.0mm/3 Blk [15meter, Aus] (240V EMC)	1
	609930	(00000000- 10354923) Cord, 1.5mm2/3, Blk, W/ Receptacle (240V EMC)	1
	609931	(00000000- 10354923) Cord, Extn, 1.5mm2/3 Blk [15meter, Euro] (240V EMC)	1
	578337000	(00000000-) Circuitbreaker, 01.5a	2
	578734	(00000000-) Seal, Splash, Circuitbreaker	2
	1063949	(10566452-) Motor, Ele, 115vdc 0.125hp (100V/120V)	1
	1019015	(00000000- 10566451) Motor, Ele, 115vdc 0.125hp 3.0d (100V/120V) (Replaced By 1063949)	1
	130472	(00000000-) Motor, Ele, 220vac, Brush Drive (220V/230V)	1
	575729	(00000000-) Motor, Brush, 230vac [843p- 5] (240 EMC)	1
	230507	(00000000-) Belt, Synchronous, 0.38 0.20p 18.0l	1
▽	613989	(00000000-) Brush Kit, Replmt [Extractor]	1
▲	100049	(00000000-) Seal, Brush, Brg	2
▲	140125	(00000000-) Bearing, Brush, 0.32b 0.87d 0.28w	2
	606778	(00000000-) Pump, Soltn, Ele, 115vac, 65psi[Int- Byp] (100V/120V)	1
	611975	(00000000-) Pump, Soltn, Ele, 230vdc, 65psi Ce (220V/230V/240V)	1
	210033	(00000000-) Valve, Water, Solenoid, 120vac Pf04/Pf04 (100V/120V)	1
	210036	(00000000-) Solenoid, 220vac [50h 1/8o] (220V/230V)	1
	210260	(00000000-) Valve, Solenoid, 240vac 50hz [Aus] (240 EMC)	1
	575276000	(00000000-) Fitting, Gasket [Quick- Jet]	2
	200964	(00000000-) Fitting, Brs, Tip [11003, T- Jet]	2

▽ ASSEMBLY

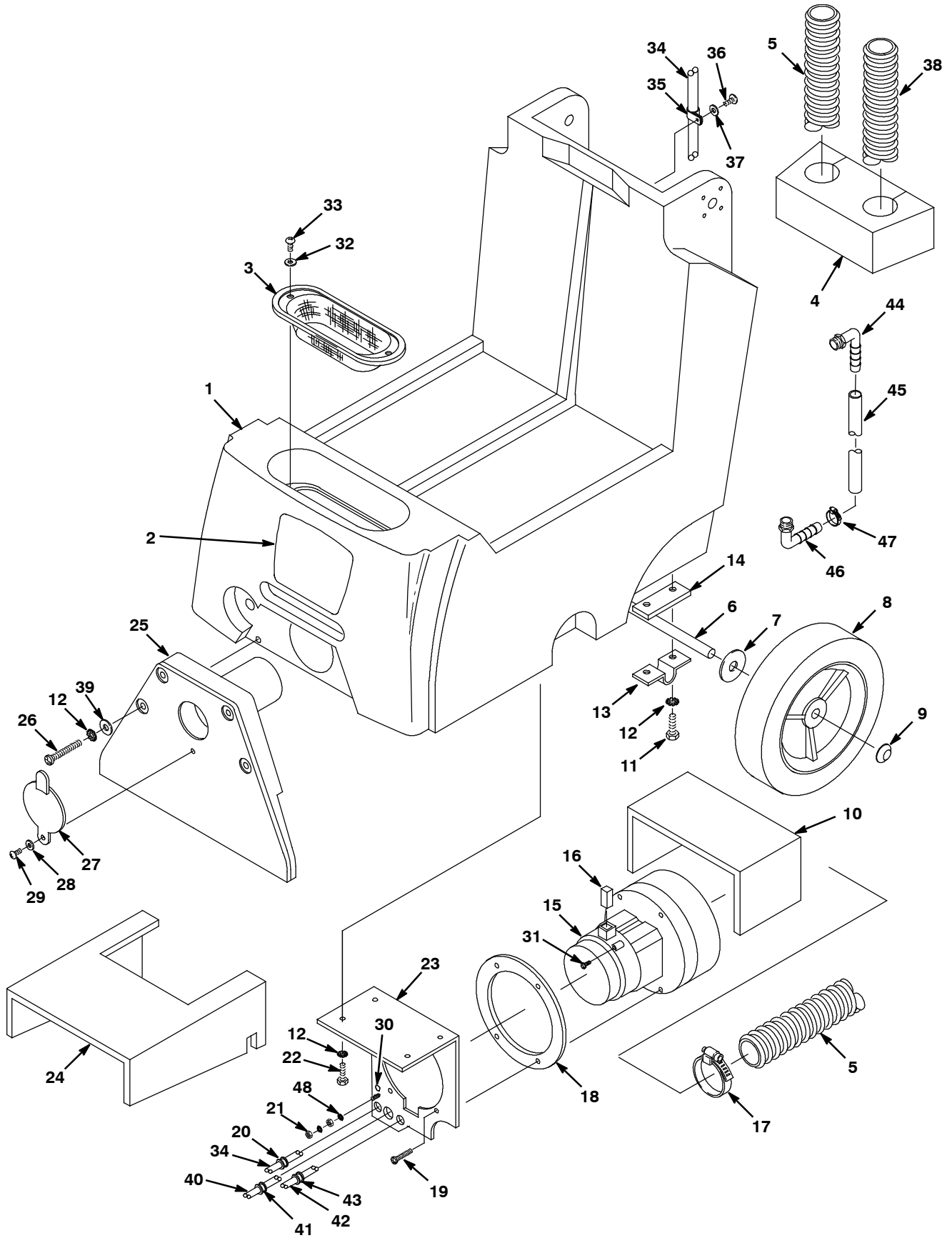
▲ INCLUDED IN ASSEMBLY

RECOMMENDED MAINTENANCE ITEMS

GENERAL RECOMMENDED MAINTENANCE ITEMS

Ref.	Part No.	Serial Number	Description	Qty.
	611807	(00000000-) Valve, Tool, Hand [Pmf] (For New Style Hand Tool #701403)	1
	1059006	(00000000-) Fitting, Jet, Tee, Plstc, Fr/ 1058747 (For New Style Hand Tool #701403)	1
	1059005	(00000000-) Seal, Org, Fr/ 1058747, Replmt (For New Style Hand Tool #701403)	1
	1059004	(00000000-) Tool, Wndw, Plstc, Fr/ 1058747 (For New Style Hand Tool #701403)	1
	1059130	(00000000-) Hose Assy, 10ft, F/1058747, Replmt (For New Style Hand Tool #701403)	1
	613471	(00000000-) Hose, Pvc, Brd, 0.12id 0.31od 015.0l (160245) (For New Style Hand Tool #701403)	1
	150913	(00000000-) Fitting, Brs, Qdc, Pf04 [Ser60] (For New Style Hand Tool #701403)	1
	608900	(00000000-) Screen, Tool, Hand (For Old Style Hand Tool #701403)	1
	608896	(00000000-) Fitting, Spray, Tip 11003 Blue (For Old Style Hand Tool #701403)	1
	608897	(00000000-) Vr, Nut, Plstc, Spray Tip (For Old Style Hand Tool #701403)	1
	606250	(00000000-) Hose, Pvc, Brd, 0.12id 0.31od 105.0l (For Old Style Hand Tool #701403)	1
	150913	(00000000-) Fitting, Brs, Qdc, Pf04 [Ser60] (For Old Style Hand Tool #701403)	1
	N/A	(00000000-) Hose, Vacuum, 1.25id X 104.0l, 1 cuff, (Rpld By P/N 1059130) (For Old Style Hand Tool #701403)	1
	N/A	(00000000-) Hose, Vacuum, 1.25id X 088.0l [I- Helix] (Rpld By P/N 1059130) (For Old Style Hand Tool #701403)	1
	N/A	(00000000-) Cuff, Hose, 1.5slip X 1.25thd Blk (Rpld By P/N 1059130) (For Old Style Hand Tool #701403)	1

SOLUTION TANK GROUP - 1 of 2



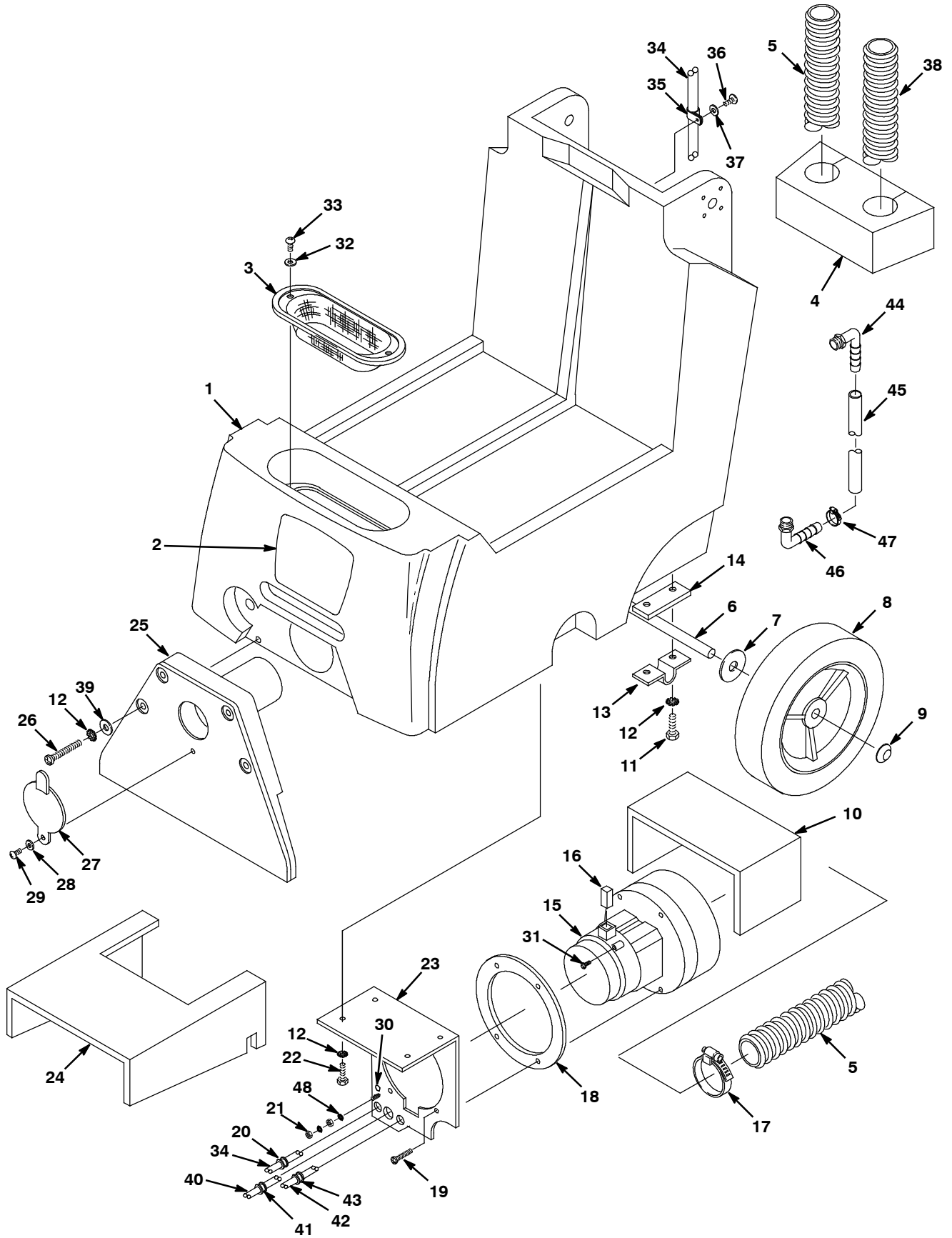
SOLUTION TANK GROUP - 1 of 2

Ref.	Part No.	Serial Number	Description	Qty.	
1	9007670	(00000000-) Tank, Soltn, Rmcphg, Trimmed [Ex- Sc- 412]	1	
2	1060464	(00000000-) Label, Logo, Cmdty, Dual, Large	1	
2	1060462	(00000000-) Label, Logo, Cmdty, Tco, Large	1	
3	611823	(00000000-) Screen, Strainer	1	
4	609063	(00000000-) Insulation, Acstc, 2.0, 07.8 X 03.3	1	
5	607276	(00000000-) Hose, Vacuum, 1.50id X 021.6l,1- E90 Cuff	1	
6	230739	(00000000-) Axle, Wheel .5d X 13.13	1	
7	140045	(00000000-) Washer, Flat, 0.51b 1.25d .06, Ss	2	
8	607277	(00000000-) Wheel, 08.0d 1.75w, Smooth Gray	2	
9	103019	(00000000-) Nut, Retainer, 0.50d 0.29l, Ss	2	
10	607181	(00000000-) Insulation, Acstc, 0.5, 22.0 X 05.0 Adh	1	
11	600385	(00000000-) Screw, Pan, Phl, M6 X 1.00 X 20, Ss	4	
12	140052	(00000000-) Washer, Lock, Ext, 0.25 Ss	12	
13	230746	(00000000-) Bracket, Axle, .5d, Offset	2	
14	609111	(00000000-) Plate, Shim, 25 X .50 X 1.25	2	
▽	15	607179	(00000000-) Fan, Vacuum, 5.7d, 120vac, 2 Stage [Qbp] (100V/120V)	1
▲	16	190155	(00000000-) Brush, Carbon [130402,18,14, 1pick=1pkg]	1
▽	15	607281	(00000000-) Fan, Vacuum, 5.7d, 240vac, 2 Stage [Qbp] (220V/230V/240V)	1
▲	16	190158	(00000000-) Brush, Carbon [130403, 1pick=1pkg]	1
17	614157	(00000000-) Clamp, Hose, Wormdrive, 1.06- 2.00d, .50w	1	
18	100143	(00000000-) Gasket, Motor, Vacuum, 5.7	1	
19	140340	(00000000-) Screw, Pan, Phl, 10- 24 X 0.62, Ss[Typ25]	4	
20	14865	(00000000-) Strainrelief, Bshg [Sr6p3- 4]	1	
21	07784	(00000000-) Nut, Hex, Std, M5 X 0.80, A2, Ss	2	
22	608322	(00000000-) Screw, Trs, M6 X 1.00 X 16, Phl, Ss	4	
23	610997	(00000000-) Plate, Mtg, Motor, Vacuum [5.7]	1	
24	609064	(00000000-) Insulation, Acstc, 0.5, 19.0 X 10.0 Ntch	1	
▽	25	607170	(00000000-) Tool Assy, Pickup, 13w [1200, Gf Ny]	1
▲	26	608324	(00000000-) Screw, Trs, M6 X 1.00 X 40, Phl, Ss	4
▲	27	607183	(00000000-) Seal, Cap, Vacuum Tool [607170]	1
▲	28	140011	(00000000-) Washer, Flat, 0.21b 0.45d .03, Ss	1
▲	29	140801	(00000000-) Screw, Trs, Phl, 08- 32 X 0.38, Ss	1
30	578859	(00000000-) Label, Warning [Ground, Textless]	1	
31	140897	(00000000-) Screw, Hex, Slt, 10- 32 X 0.25 [Ground]	1	
32	140032	(00000000-) Washer, Flat, 06, Ss	2	
33	140826	(00000000-) Screw, Pan, Phl, 06- 20 X 0.75, Fmg/Ab,Ss	2	
34	611305	(00000000-) Cord, 18ga /2, 066.0l Blk [Sjt]	1	
35	140324	(00000000-) Clamp, Cable, Nyl, 0.31d, Blk	1	
36	140340	(00000000-) Screw, Pan, Phl, 10- 24 X 0.62, Ss[Typ25]	1	
37	140011	(00000000-) Washer, Flat, 0.21b 0.45d .03, Ss	1	
38	607275	(00000000-) Hose, Vacuum, 1.50id X 039.1l, 2cuff,E90	1	
39	140027	(00000000-) Washer, Flat, 0.35b 0.75d .04, Ss	4	
40	611040	(00000000-) Cord, 18ga /4, 041.0l Blk [Sjt]	1	

▽ ASSEMBLY

▲ INCLUDED IN ASSEMBLY

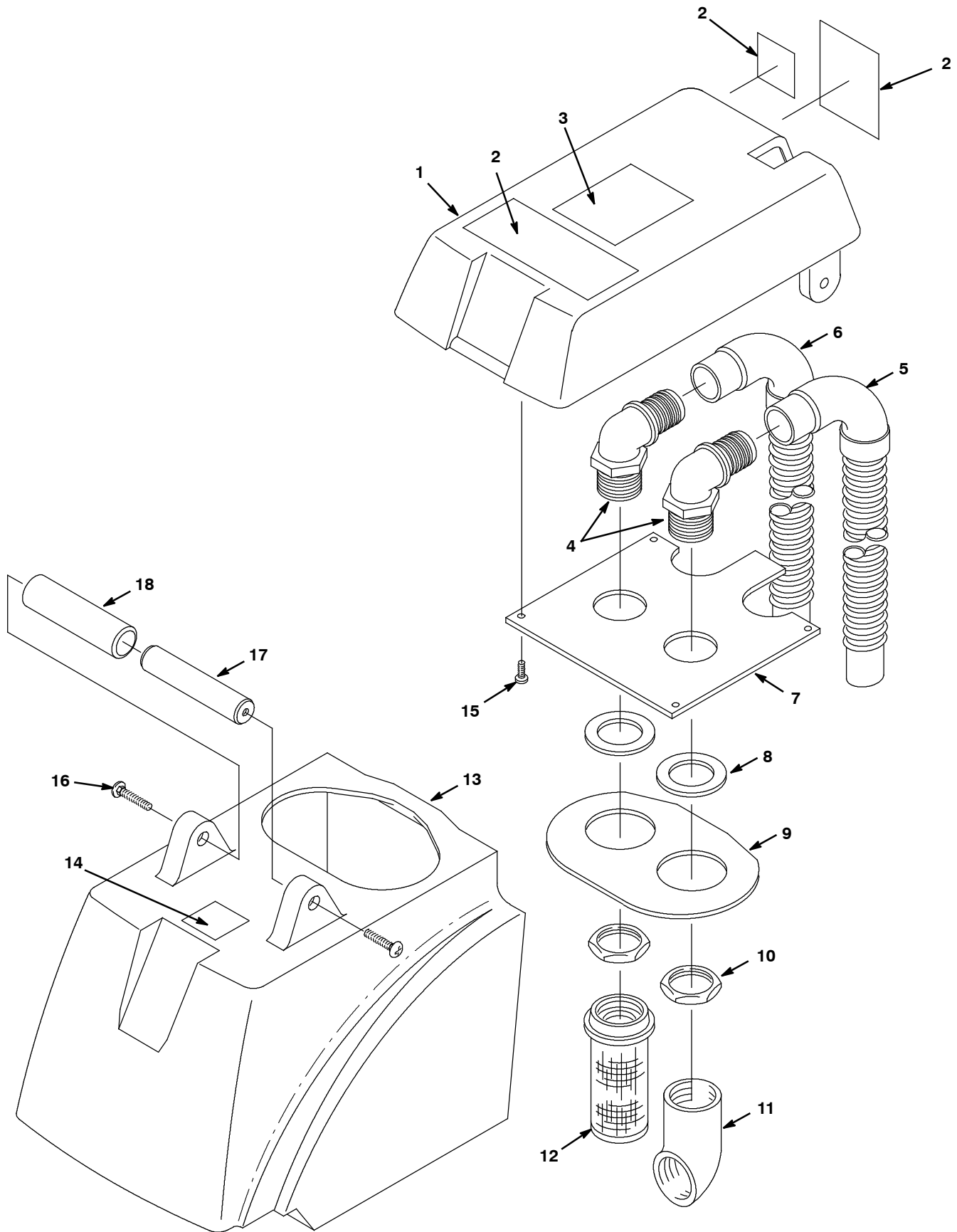
SOLUTION TANK GROUP - 2 of 2



SOLUTION TANK GROUP - 2 of 2

Ref.	Part No.	Serial Number	Description	Qty.
41	605395	(00000000-) Strainrelief, Bshg [Sr7p- 2]	1
42	611041	(00000000-) Cord, 18ga /5, 054.0l Blk [Sjt]	1
43	130698	(00000000-) Bushing, Snap, .50id, Blk	1
44	609112	(00000000-) Fitting, Plstc, E90, Bm06/Pm04, Rwk	1
45	608334	(00000000-) Hose, Drain, 0.50id X 20.0l, Vyl [5100]	1
46	150415	(00000000-) Fitting, Plstc, E90, Bm06/Pm04	1
47	140301	(00000000-) Clamp, Hose, Ear, 0.62d	1
48	07514	(00000000-) Washer Lock, Int, 10 Ss	2

RECOVERY TANK GROUP



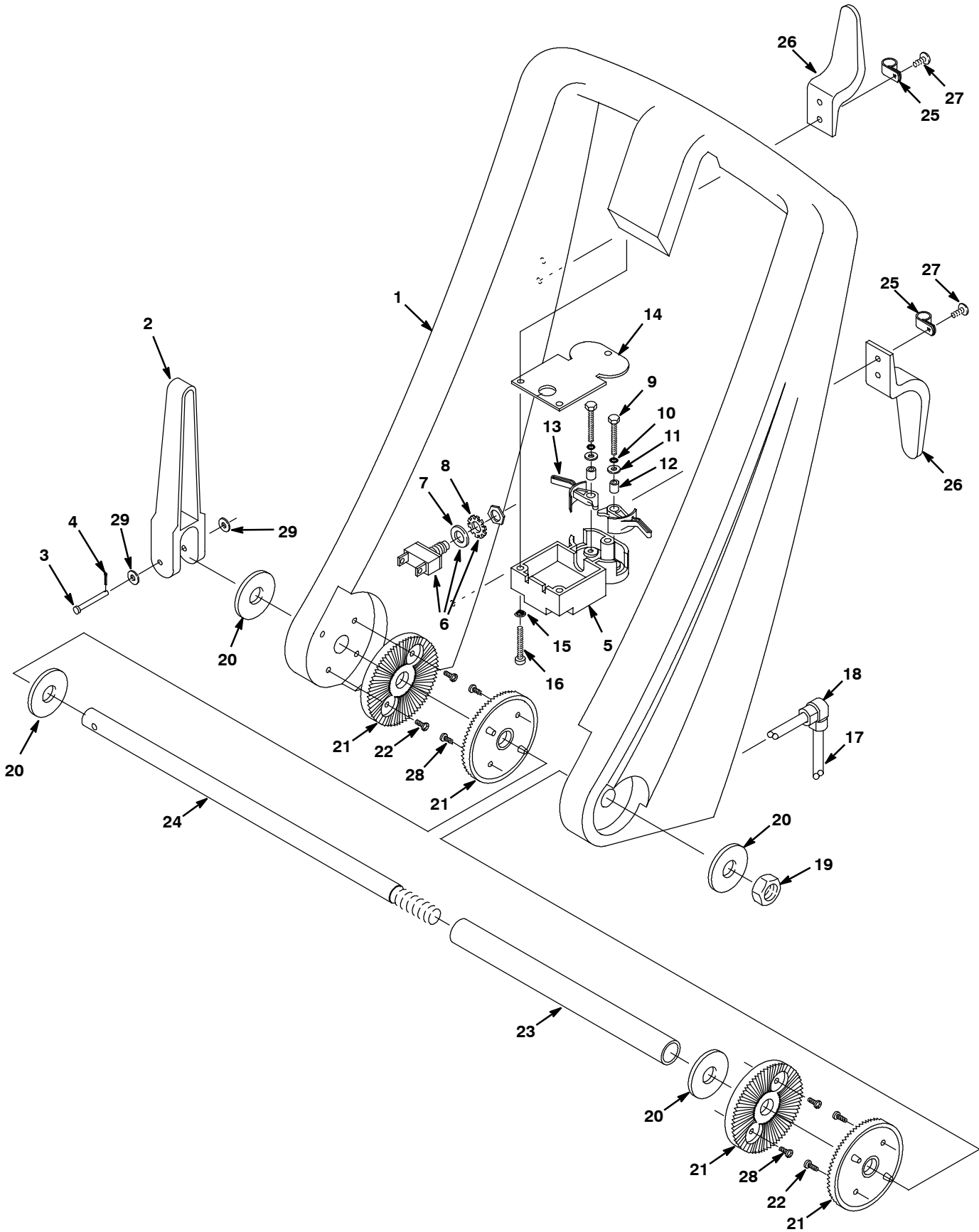
RECOVERY TANK GROUP

	Ref.	Part No.	Serial Number	Description	Qty.
▽	1	9007672	(00000000-) Cover, Rm- Cphg, Afmkt [412] (NA)	1
▲	2	1026383	(00000000-) Label, Warning [Expl,Fire,Shk En/Fr/Es]	1
▽	1	9007892	(00000000-) Cover, Rm- Cphg, Afmkt Jp [412] (Japan)	1
▲	2	613861	(00000000-) Label, Warning, 4 X 3, Tj [Ac Scrub/Ext]	1
▽	1	9007893	(00000000-) Cover, Rm- Cphg, Afmkt Ch [412] (China)	1
▲	2	1048798	(00000000-) Label, Warning [Exp,Fire,Shk En,Es,Ch]	1
	3	611380	(00000000-) Label, Instr, Rental (NA)	1
	3	611042	(00000000-) Label, Instr [Marksman2] (Japan & China)	1
	4	607297	(00000000-) Fitting, Pvc, E90, Bm24/Pm24	2
	5	607275	(00000000-) Hose, Vacuum, 1.50id X 039.1l, 2cuff,E90	1
	6	607276	(00000000-) Hose, Vacuum, 1.50id X 021.6l,1- E90 Cuff	1
	7	607172	(00000000-) Cover, Plate, .12 X 8.63 X 9, Blk Abs	1
	8	210234	(00000000-) Gasket, .18, 1.18id 2.50od	2
	9	607290	(00000000-) Gasket, Ring, Bag, .188th, Neo	1
	10	210240	(00000000-) Nut, Hex, Flng, Pf24, Metal	2
	11	609065	(00000000-) Fitting, Pvc, E90,Pf24/1.50d[Rwk611063]	1
	12	609531	(00000000-) Float, Shutoff, Vacuum, 1- Ball, 1.50d	1
	13	9007674	(00000000-) Tank, Recvy, Rm- Cphg, Afmkt [412]	1
	14	630420	(00000000-) Label, Hzrd, Flammable Matl, Ce	1
	15	607006	(00000000-) Screw, Trs, M4 X 0.70 X 12, Phl, Pl	4
	16	608324	(00000000-) Screw, Trs, M6 X 1.00 X 40, Phl, Ss	2
	17	607294	(00000000-) Bar, 1.0d X 4.5, Nyl	1
	18	102569	(00000000-) Grip, Handle, Foam, Blk .75id X 4.25l	1

▽ ASSEMBLY

▲ INCLUDED IN ASSEMBLY

HANDLE GROUP



HANDLE GROUP

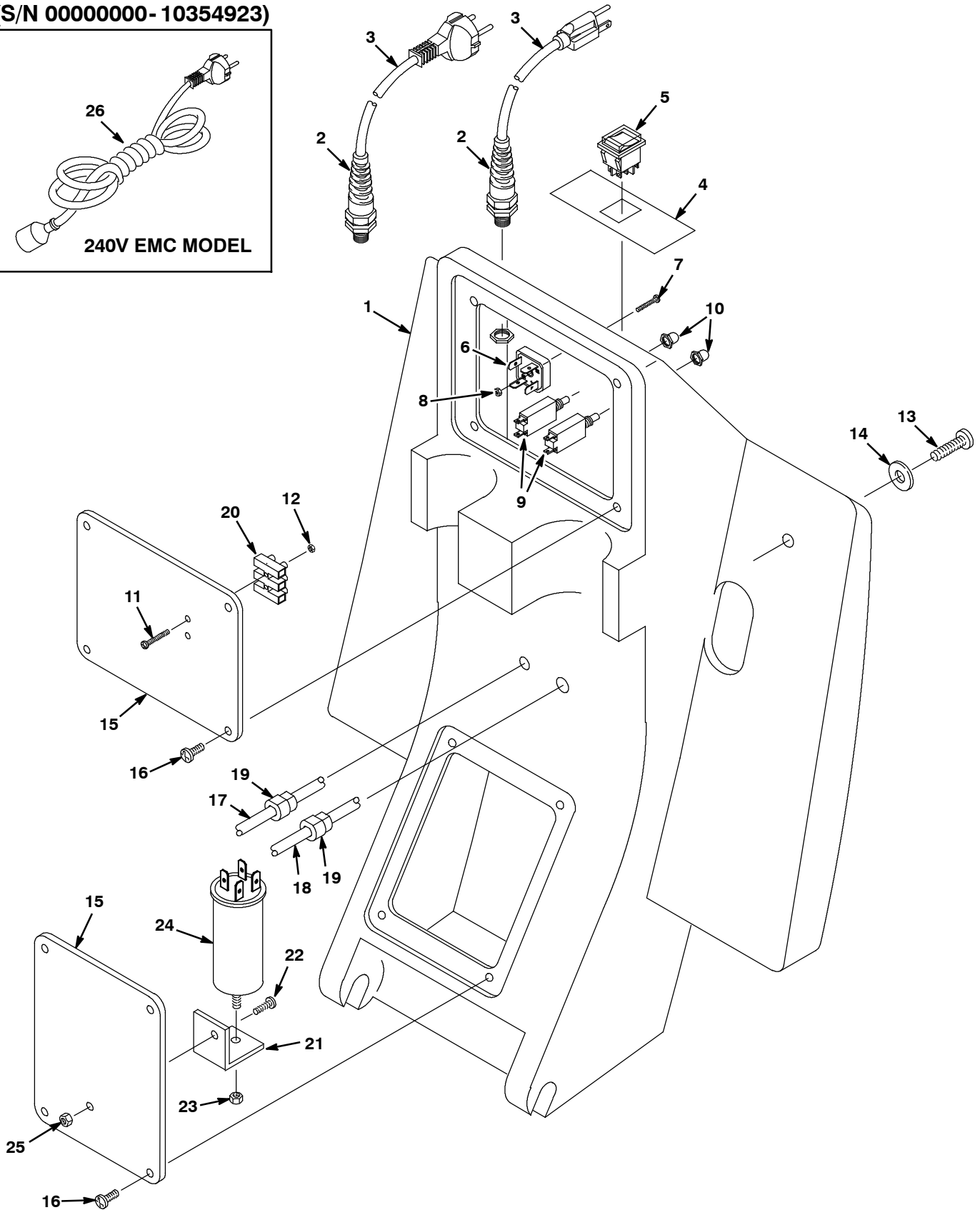
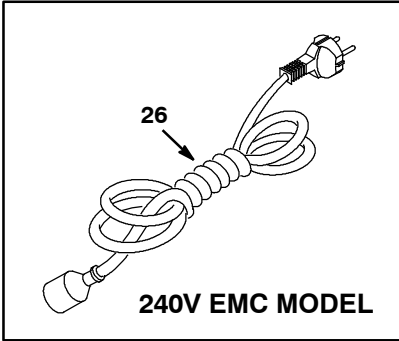
Ref.	Part No.	Serial Number	Description	Qty.	
1	9007676	(00000000-) Handle, Rm- Blk, Trimmed [Ex- Sc- 412]	1	
2	607315	(00000000-) Lever, Handle, Pivot [Camlock]	1	
3	607278	(00000000-) Pin, Clevis, 0.19d X 1.25l, PI	1	
4	39005	(00000000-) Pin, Cotter, .094 X 0.75	1	
▽	5	611469	(00000000-) Controlbox Assy, Trigger [5100/1200]	1
▲▽	6	9008568	(00000000-) Switch Kit, W/ Washers, Fr/ F/1063165	1
▲▲	7	1065856	(00000000-) Washer, Flat, 0.52b 0.88d .06, Stl, PI	1
▲▲	8	1067431	(00000000-) Washer, Lock, Ext, 0.50 Stl, PI	1
▲	9	069764190	(00000000-) Screw, Hex, M3 X .5 X 16	2
▲	10	39658	(00000000-) Washer, Lock, Int, 04	2
▲	11	578186000	(00000000-) Washer, Flat, M4, PI	2
▲	12	578082000	(00000000-) Tube, Plstc, 0.14id 0.31od 00.4l, Nyl	2
▲	13	578002000	(00000000-) Arm, Controlbox, Trigger	2
	14	606349	(00000000-) Gasket, Console, Trigger	1
	15	02938	(00000000-) Washer, Lock, Int, 08, Ss	3
	16	200070354	(00000000-) Screw, Pan, Phl, M4 X 0.70 X 30, PI	3
	17	611305	(00000000-) Cord, 18ga /2, 066.0l Blk [Sjt]	1
	18	608323	(00000000-) Strainrelief, Bshg [Sr10- 2]	1
	19	08711	(00000000-) Nut, Hex, Lock, M12 X 1.75, NI	1
	20	140045	(00000000-) Washer, Flat, 0.51b 1.25d .06, Ss	4
	21	607175	(00000000-) Serrated Pad - Pivot Handle	4
	22	609062	(00000000-) Screw, Trs, M5 X 0.80 X 12, Phl, Ss	4
	23	608419	(00000000-) Tube, 0.50id 0.62od 07.4l, Stl, PI	1
	24	607177	(00000000-) Shaft, Pivot .5d X 13.25	1
	25	140324	(00000000-) Clamp, Cable, Nyl, 0.31d, Blk	2
	26	230920.BK	(00000000-) Hook, Cord, Blk [Boss]	2
	27	607006	(00000000-) Screw, Trs, M4 X 0.70 X 12, Phl, PI	4
	28	608322	(00000000-) Screw, Trs, M6 X 1.00 X 16, Phl, Ss	4
	29	140011	(00000000-) Washer, Flat, 0.21b 0.45d .03, Ss	2

▽ ASSEMBLY

▲ INCLUDED IN ASSEMBLY

REAR PANEL GROUP

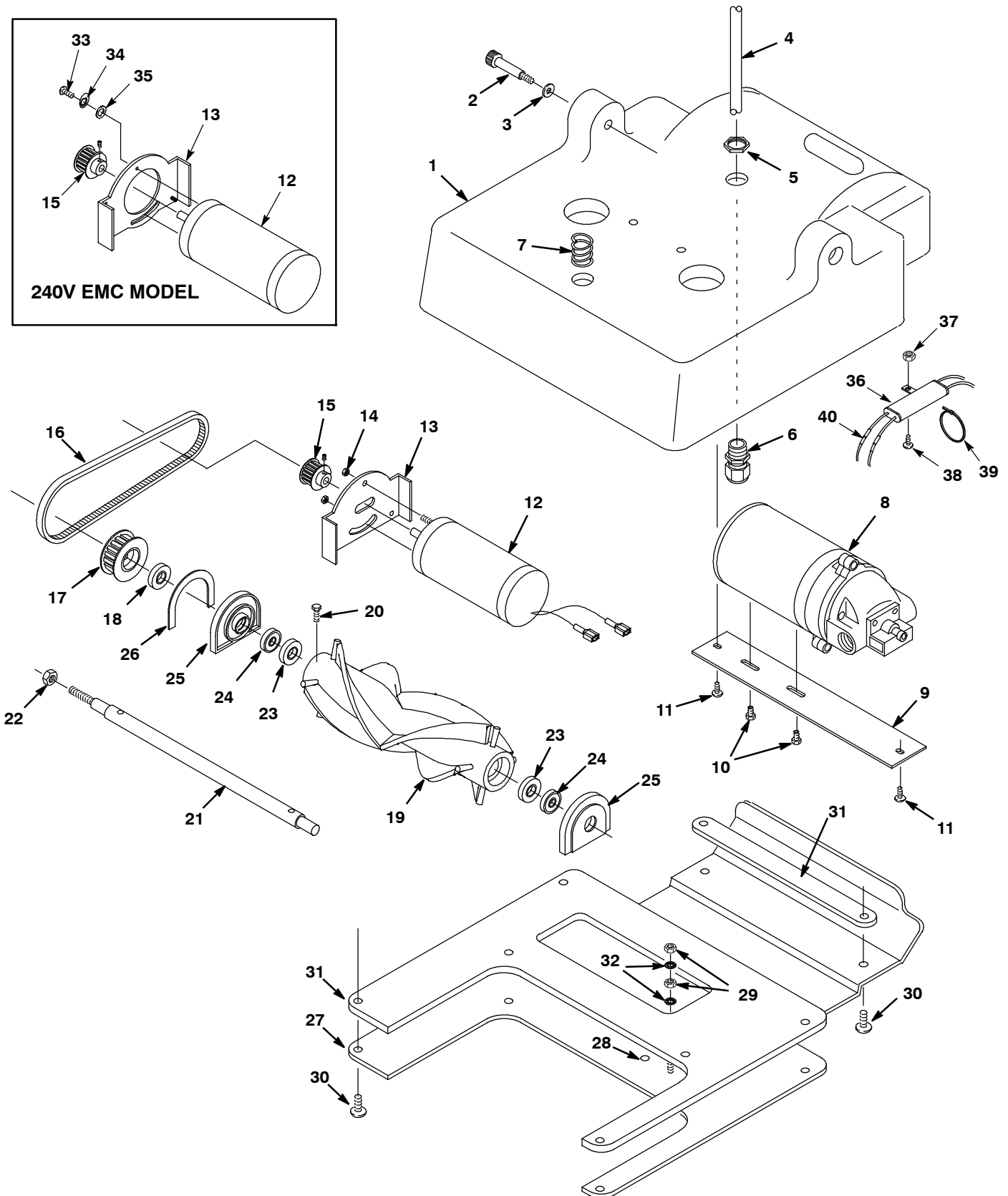
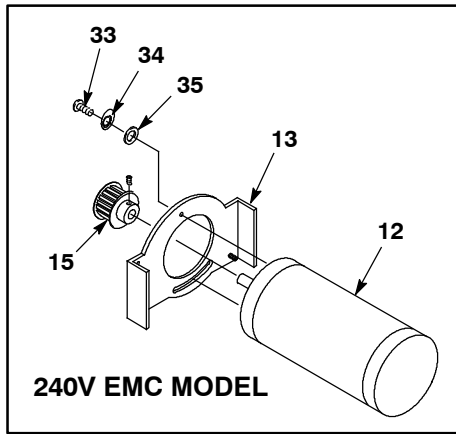
(S/N 00000000-10354923)



REAR PANEL GROUP

Ref.	Part No.	Serial Number	Description	Qty.
1	608446	(00000000-) Panel, Rear, Rm- Blk, Trimmed	1
2	130166	(00000000-) Grip, Cord, Strainrelief Pg- 11 W/Nut Bk	1
3	130222	(00000000-) Cord, 16ga /3, 25ft Yel [Sjto] (100V/120V)	1
3	600324	(00000000-) Cord, Power, 1.5mm2/3 Blk [15meter Euro] (220V/230V)	1
3	1038777	(10354924-) Cord, Power, 1.0mm/3 Blk [15meter, Aus] (240V EMC)	1
3	609930	(00000000- 10354923) Cord, 1.5mm2/3, Blk, W/ Receptacle (240V EMC)	1
4	611044	(00000000-) Label [Switch, Marksman2]	1
5	1044804	(00000000-) Switch, Rocker, Dpst, On- Off, W/ Cover	1
6	130304	(00000000-) Rectifier, Bridge, 600v, 15a	1
7	140335	(00000000-) Screw, Rnd, Slted, 10- 24 X 1.00, Nyl	1
8	140336	(00000000-) Nut, Hex, #10- 24, Nyl	1
9	578337000	(00000000-) Circuitbreaker, 01.5a	2
10	578734	(00000000-) Seal, Splash, Circuitbreaker	2
11	140879	(00000000-) Screw, Rnd, Slted, 06- 32 X 0.75, Nyl (220V/230V/240V)	2
12	140534	(00000000-) Nut, Hex, #06- 32, Nyl (220V/230V/240V)	2
13	600385	(00000000-) Screw, Pan, Phl, M6 X 1.00 X 20, Ss	2
14	140027	(00000000-) Washer, Flat, 0.35b 0.75d .04, Ss	2
15	608420	(00000000-) Cover, Plate, .09 X 4 X 5, Abs [Lk]	2
16	607006	(00000000-) Screw, Trs, M4 X 0.70 X 12, Phl, Pl	8
17	611040	(00000000-) Cord, 18ga /4, 041.0l Blk [Sjt]	1
18	611041	(00000000-) Cord, 18ga /5, 054.0l Blk [Sjt]	1
19	605395	(00000000-) Strainrelief, Bshg [Sr7p- 2]	2
20	130005	(00000000-) Terminal, 25a, 3 Position Strip (220V/230V/240V)	1
21	603957	(00000000-) Bracket, Fltr [Rfi] (240V EMC)	1
22	607006	(00000000-) Screw, Trs, M4 X 0.70 X 12, Phl, Pl (240V EMC)	1
23	07786	(00000000-) Nut, Hex, Std, M8 X 1.25, Ss (240V EMC)	1
24	600383	(00000000-) Filter [Rfi] (240V EMC)	1
25	1049573	(00000000-) Nut, Hex, Std, M4 X 0.70 Ss (240V EMC)	1
26	609931	(00000000- 10354923) Cord, Extn, 1.5mm2/3 Blk [15meter, Euro] (240V EMC)	1

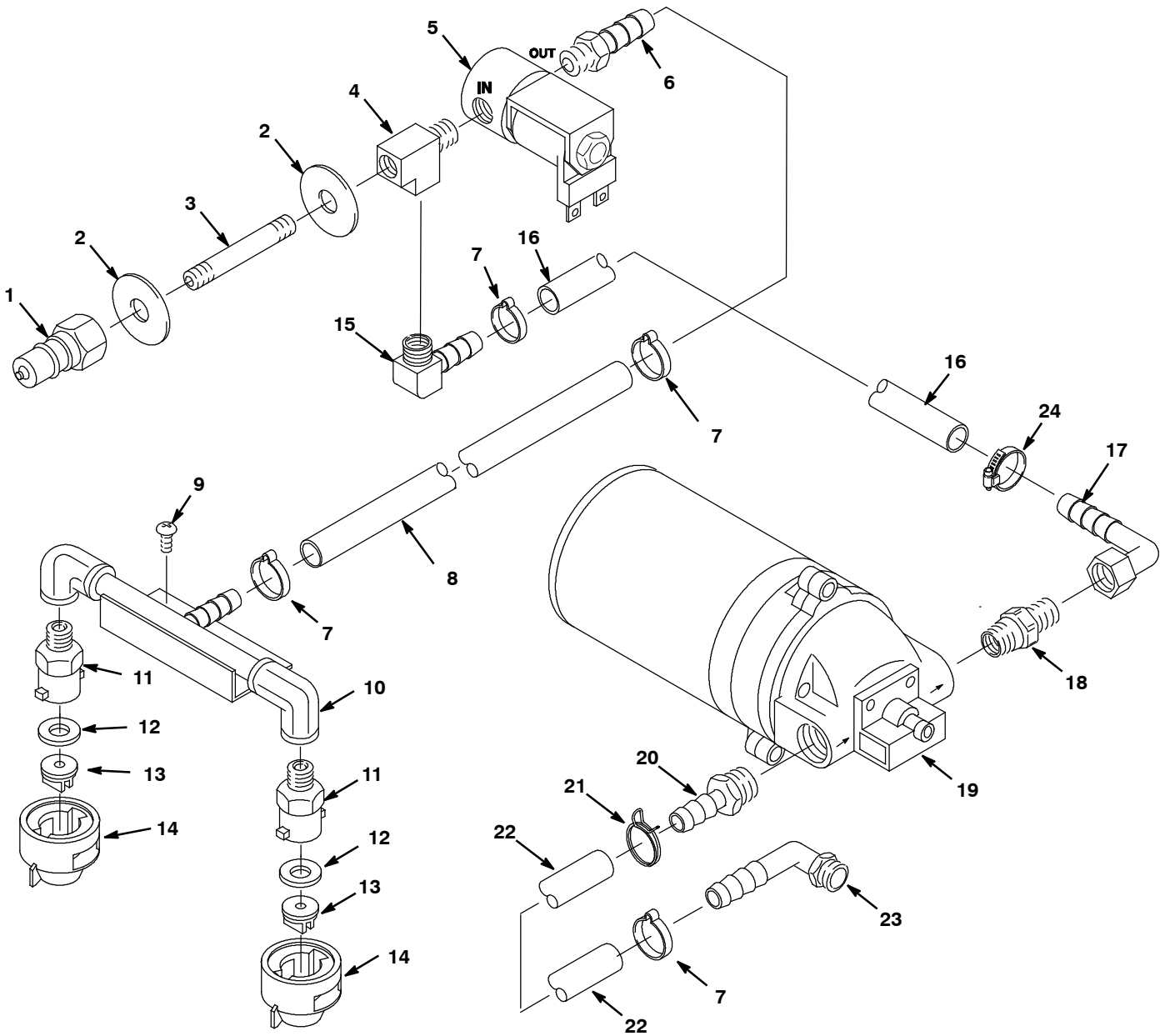
BRUSH BASE GROUP



BRUSH BASE GROUP

Ref.	Part No.	Serial Number	Description	Qty.	
1	610995	(00000000-) Base, 4.0gal, Rm- Blk, Trimmed	1	
2	1024965	(00000000-) Bolt, Shld, 08mmd X 030mm, M06 X 1.0	2	
3	140027	(00000000-) Washer, Flat, 0.35b 0.75d .04, Ss	2	
4	611041	(00000000-) Cord, 18ga /5, 054.0l Blk [Sjt]	1	
5	140638	(00000000-) Nut, Hex, Pf08, Blk Nyl [Conduit]	1	
6	130181	(00000000-) Grip, Cord, Strainrelief, .50npt	1	
7	611039	(00000000-) Spring, Cmpr, 0.60od .04wir 01.5l, Pl,Mw	1	
8	606778	(00000000-) Pump, Soltn, Ele, 115vac, 65psi[Int- Byp] (100V/120V)	1	
8	611975	(00000000-) Pump, Soltn, Ele, 230vdc, 65psi Ce (220V/230V/240V)	1	
9	610958	(00000000-) Plate, Mtg, Pump [Shurflo]	1	
10	140751	(00000000-) Screw, Hex, 10- 32 X 0.50, Pl	2	
11	607006	(00000000-) Screw, Trs, M4 X 0.70 X 12, Phl, Pl	2	
12	1063949	(10566452-) Motor, Ele, 115vdc 0.125hp (100V/120V)	1	
12	1019015	(00000000- 10566451) Motor, Ele, 115vdc 0.125hp 3.0d (100V/120V) (Replaced By 1063949)	1	
12	130472	(00000000-) Motor, Ele, 220vac, Brush Drive (220V/230V)	1	
12	575729	(00000000-) Motor, Brush, 230vac [843p- 5] (240 EMC)	1	
13	230366	(00000000-) Plate, Mount, Motor (100V/120V/220V/230V)	1	
13	611032	(00000000-) Plate, Mtg, Brush Motor (240 EMC)	1	
14	140518	(00000000-) Nut, Hex, Lock, #10- 32, Kep, Ss(100V/120V/220V/230V)	2	
15	230506	(00000000-) Pulley, Drive, 15tooth X .31b [1/5p]	1	
16	230507	(00000000-) Belt, Synchronous, 0.38 0.20p 18.0l	1	
▽	613989	(00000000-) Brush Kit, Replmt [Extractor]	1	
▲	17	230505	(00000000-) Pulley, Drive, 26tooth X .31b [1/5p]	1
▲	18	230363	(00000000-) Spacer, 0.33b 0.62d 0.16l, Pl	1
▲	19	1006441	(00000000-) Brush, Scb, 10.5l, 04sr, Nyl	1
▲	20	24672	(00000000-) Screw, Hex, .25- 20 X 0.75, Ss	4
▲	21	230275	(00000000-) Shaft, Brush, 13.0l [Pe1300]	1
▲	22	140548	(00000000-) Nut, Hex, Jam, Fin .31, Ss	1
▲	23	100049	(00000000-) Seal, Brush, Brg	2
▲	24	140125	(00000000-) Bearing, Brush, 0.32b 0.87d 0.28w	2
▲	25	230261	(00000000-) Block, Brush Brg	2
▲	26	100005	(00000000-) Gasket, Block, Brg	1
	27	610986	(00000000-) Plate, Base, Brush	1
	28	578859	(00000000-) Label, Warning [Ground, Textless]	1
	29	07784	(00000000-) Nut, Hex, Std, M5 X 0.80, A2, Ss	2
	30	609062	(00000000-) Screw, Trs, M5 X 0.80 X 12, Phl, Ss	8
	31	610987	(00000000-) Gasket, Plt, Base, .13th, Adh (100V/120V/220V/230V)	1
	31	610987	(00000000-) Gasket, Plt, Base, .13th, Adh (240 EMC)	2
	32	07514	(00000000-) Washer, Lock, Int, 10, Ss (240 EMC)	2
	33	140801	(00000000-) Screw, Trs, Phl, 08- 32 X 0.38, Ss (240 EMC)	2
	34	02938	(00000000-) Washer, Lock, Int, 08, Ss (240 EMC)	2
	35	140011	(00000000-) Washer, Flat, 0.21b 0.45d .03, Ss (240 EMC)	2
	36	613147	(00000000-) Filter Assy, 240volt [Rfi, Kema, 1200] (240 EMC)	1
	37	1049573	(00000000-) Nut, Hex, Jam, M4 X 0.70, Ss (240 EMC)	1
	38	607006	(00000000-) Screw, Trs, M4 X 0.70 X 12, Phl, Pl (240 EMC)	1
	39	130040	(00000000-) Tie, Cable, Nyl, 06.0l .12w (240 EMC)	2
	40	603641	(00000000-) Filter, Choke [Rfi] (240 EMC)	2

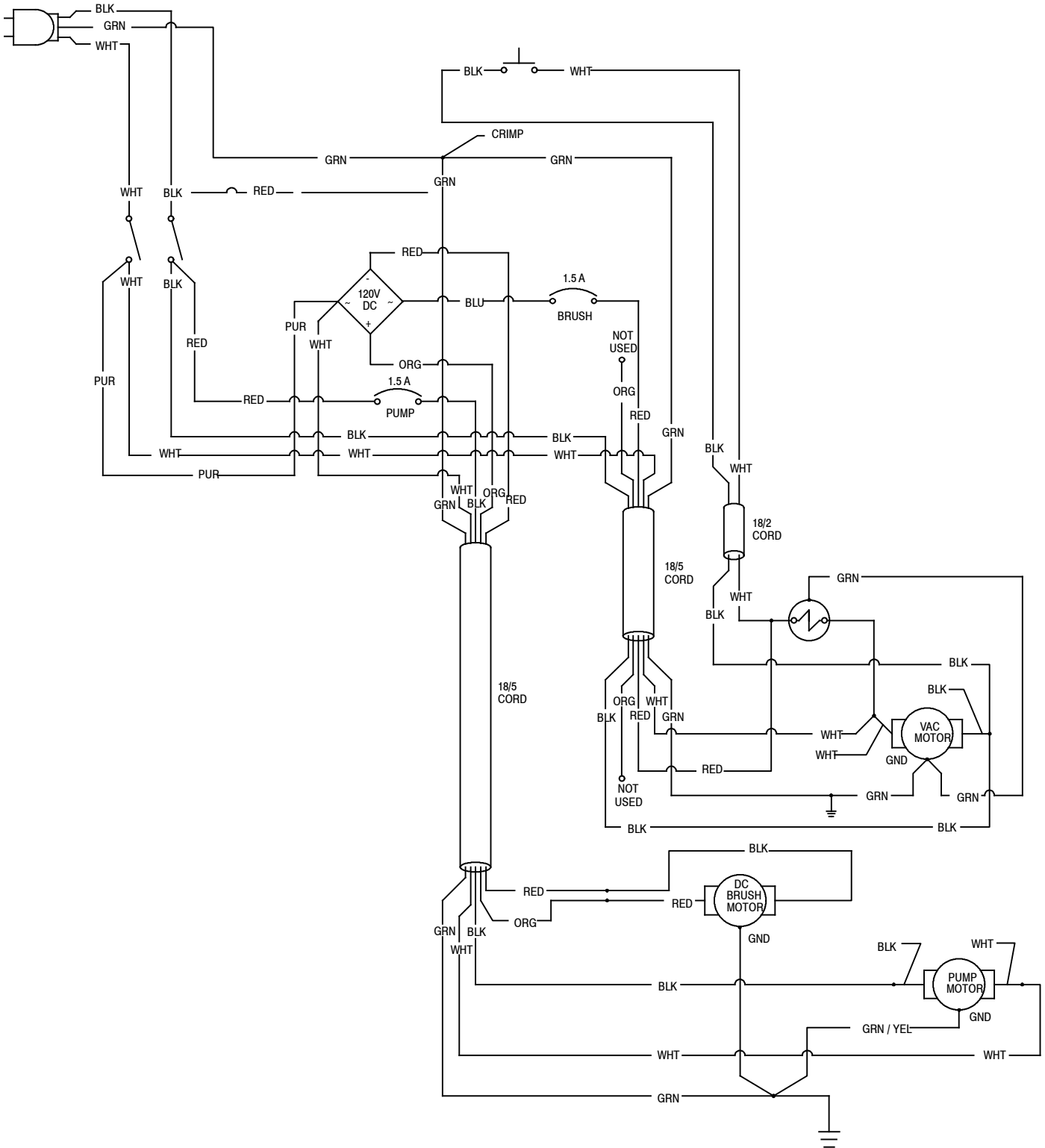
SOLUTION GROUP



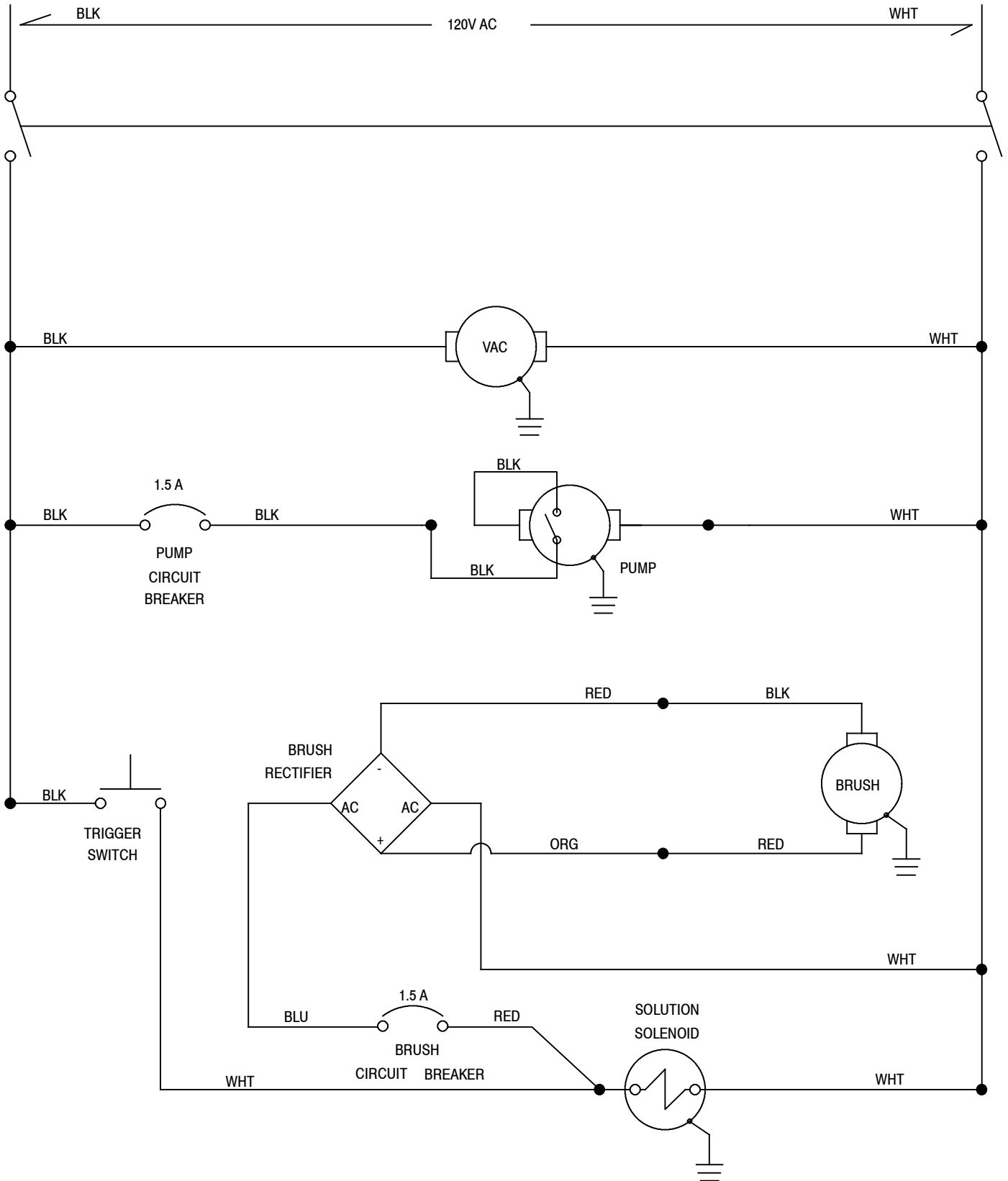
SOLUTION GROUP

Ref.	Part No.	Serial Number	Description	Qty.
1	150933	(00000000-) Fitting, Brs, Qdc, Pm04 [Ser60]	1
2	140008	(00000000-) Washer, Flat, 0.57b 1.28d .08, Ss	2
3	150618	(00000000-) Fitting, Brs, Str, Pm04x3.0 [Nipl Taped]	1
4	150709	(00000000-) Fitting, Brs, Tee, Pm04/Pf04/Pf04, Run	1
5	210033	(00000000-) Valve, Water, Solenoid, 120vac Pf04/Pf04 (100V/120V)	1
5	210036	(00000000-) Solenoid, 220vac [50h 1/8o] (220V/230V)	1
5	210260	(00000000-) Valve, Solenoid, 240vac 50hz [Aus] (240 EMC)	1
6	150516	(00000000-) Fitting, Brs, Str, Bm06/Pm04	1
7	140301	(00000000-) Clamp, Hose, Ear, 0.62d	5
8	609434	(00000000-) Hose, Pvc, Brd, 0.38id 0.62od 10.5l,Gray	1
9	609062	(00000000-) Screw, Trs, M5 X 0.80 X 12, Phl, Ss	2
10	608421	(00000000-) Fitting Assy, Manifold, 2 Jet	1
11	575281000	(00000000-) Fitting, Spray, Body [Quick- Jet]	2
12	575276000	(00000000-) Fitting, Gasket [Quick- Jet]	2
13	200964	(00000000-) Fitting, Brs, Tip [11003, T- Jet]	2
14	575282000	(00000000-) Fitting, Cap [Q- Jet]	2
15	150419	(00000000-) Fitting, Brs, E90, Bm06/Pm04 [Taped]	1
16	606163	(00000000-) Hose, Pvc, Brd, 0.38id 0.62od 22.0l,Gray	1
17	611010	(00000000-) Fitting, Plstc, E90, Bm06/Pf08, Swivel	1
18	611009	(00000000-) Fitting, Plstc, Str, Pm06/Pm08, Reducer	1
19	606778	(00000000-) Pump, Soltn, Ele, 115vac, 65psi[Int- Byp] (100V/120V)	1
19	611975	(00000000-) Pump, Soltn, Ele, 230vdc, 65psi Ce [Tuv] (220V/230V/240V)	1
20	150538	(00000000-) Fitting, Plstc, Str, Bm06/Pm06	1
21	607775	(00000000-) Clamp, Hose, Wir, .63 - .66, Blk	1
22	606163	(00000000-) Hose, Pvc, Brd, 0.38id 0.62od 22.0l,Gray	1
23	150415	(00000000-) Fitting, Plstc, E90, Bm06/Pm04	1
24	54333	(00000000-) Clamp, Hose, Wormdrive, 0.31- 0.88d, .31w	1

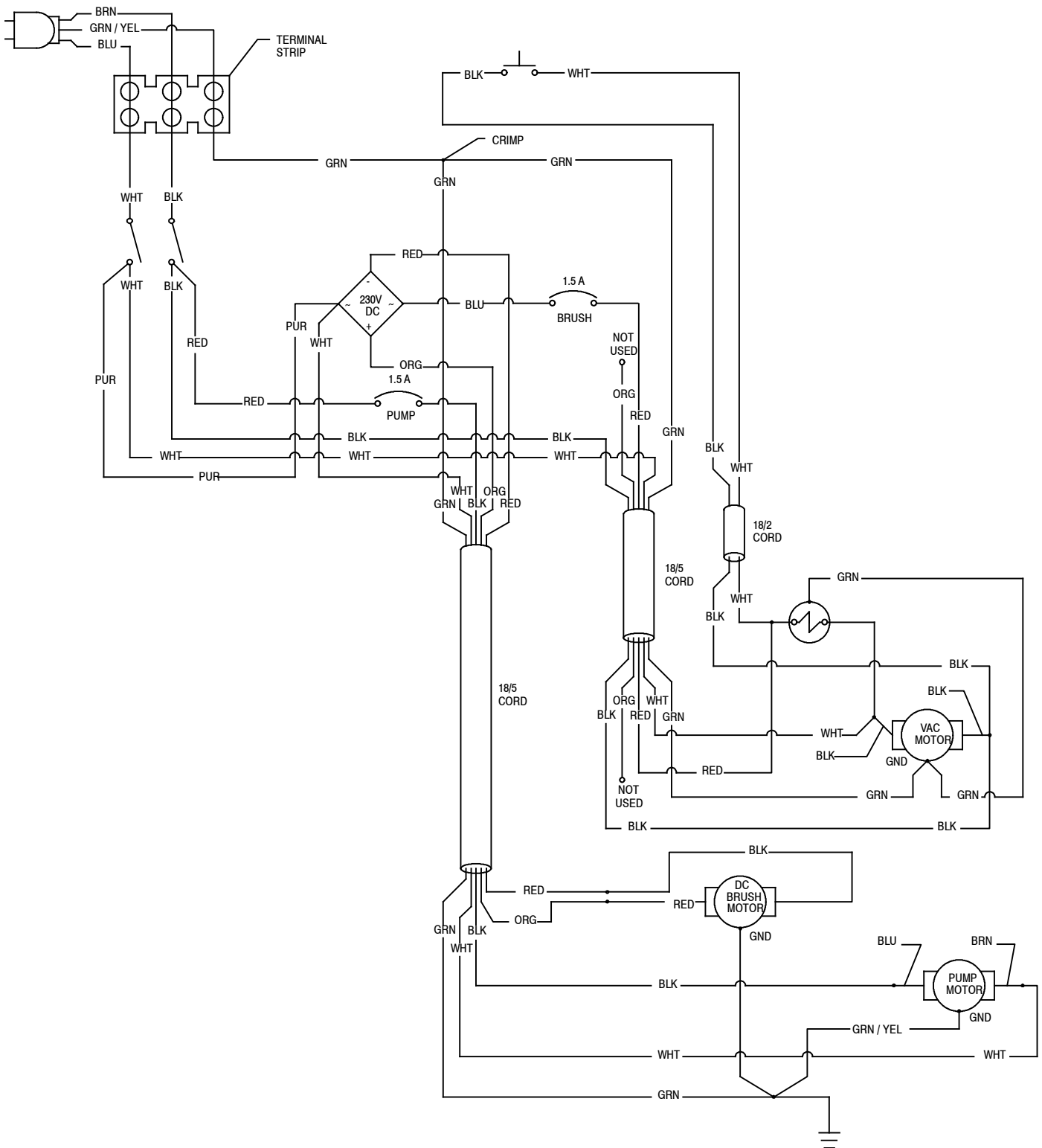
WIRING DIAGRAM, 100V/120V



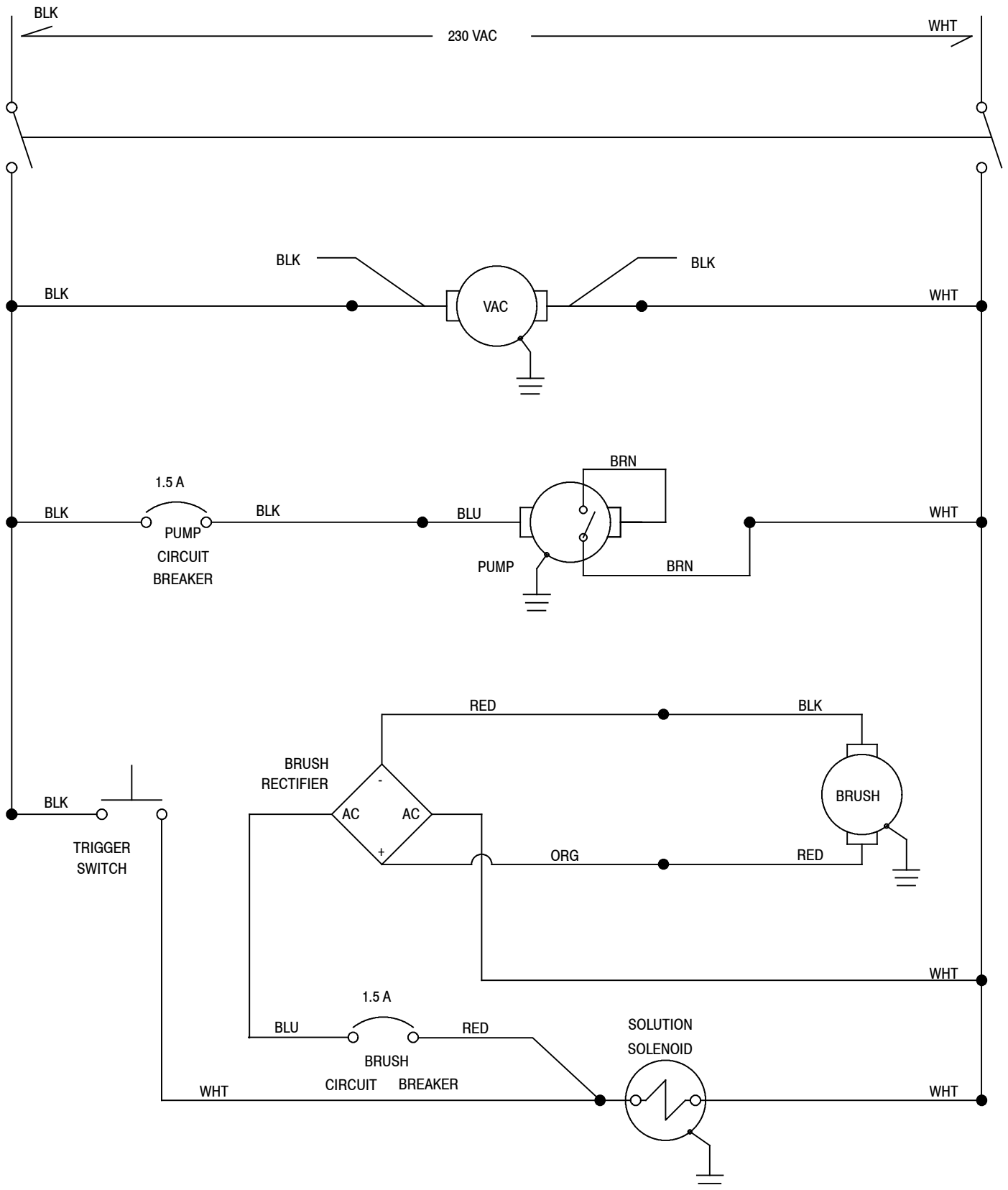
LADDER DIAGRAM, 100V/120V



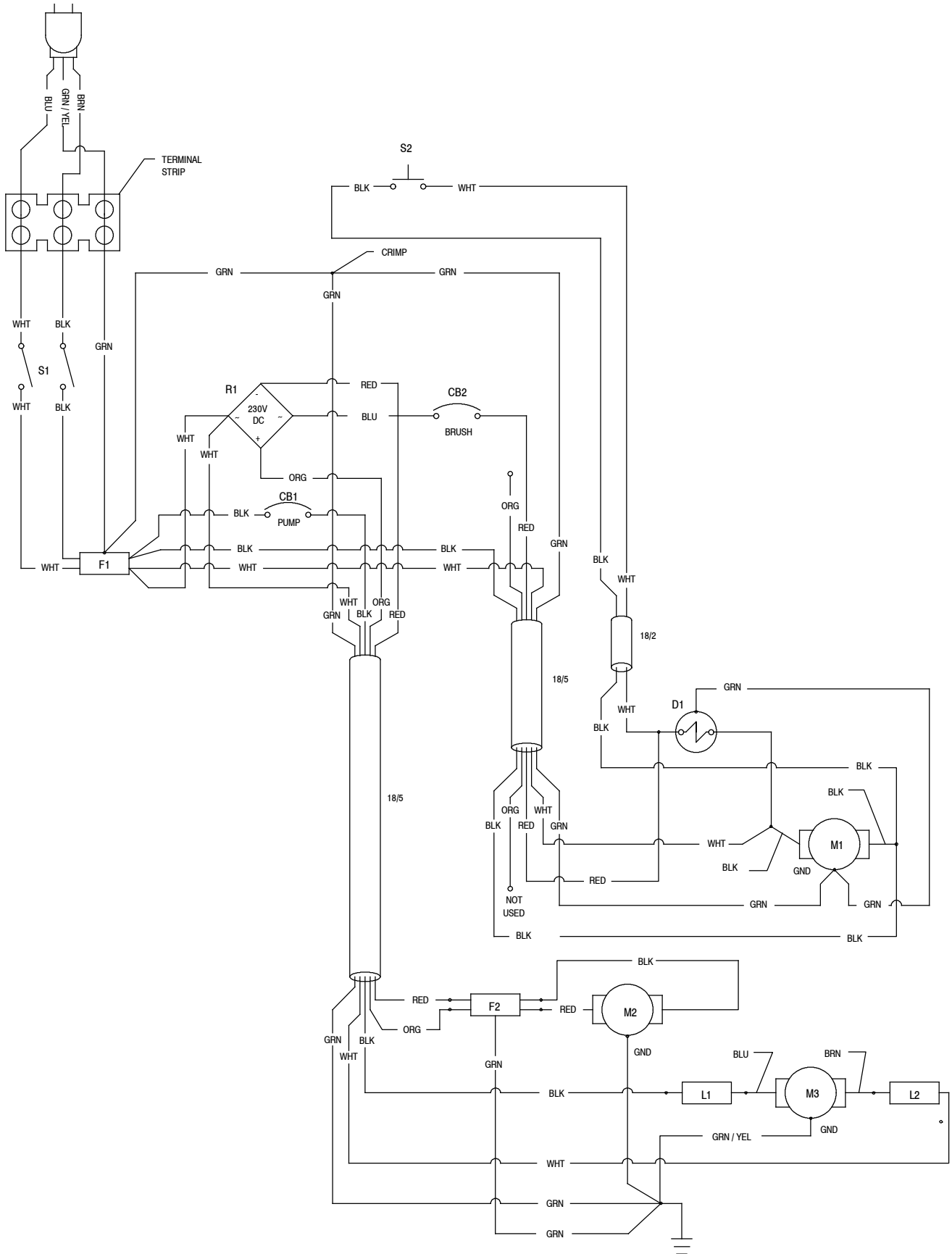
WIRING DIAGRAM, 220V/230V



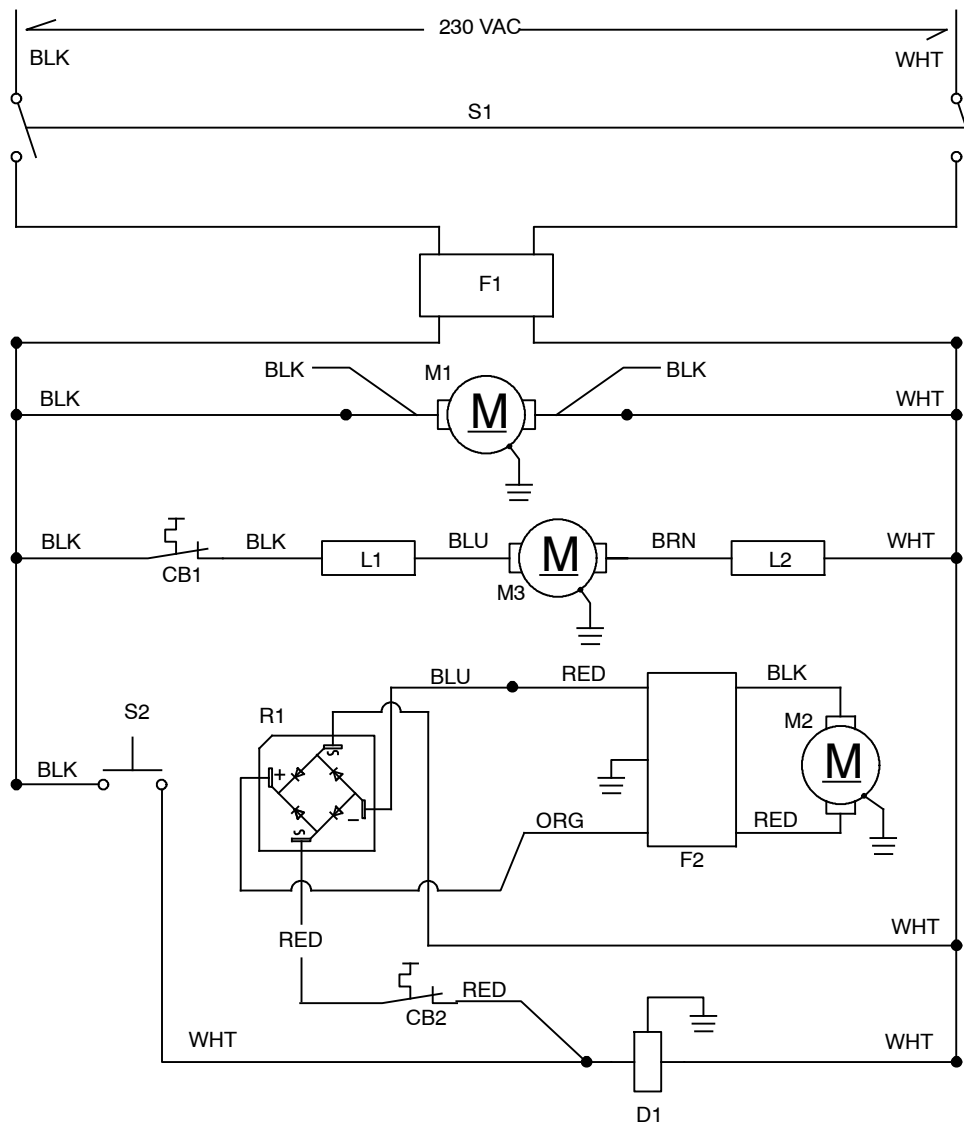
LADDER DIAGRAM, 220V/230V



WIRING DIAGRAM, 240V EMC



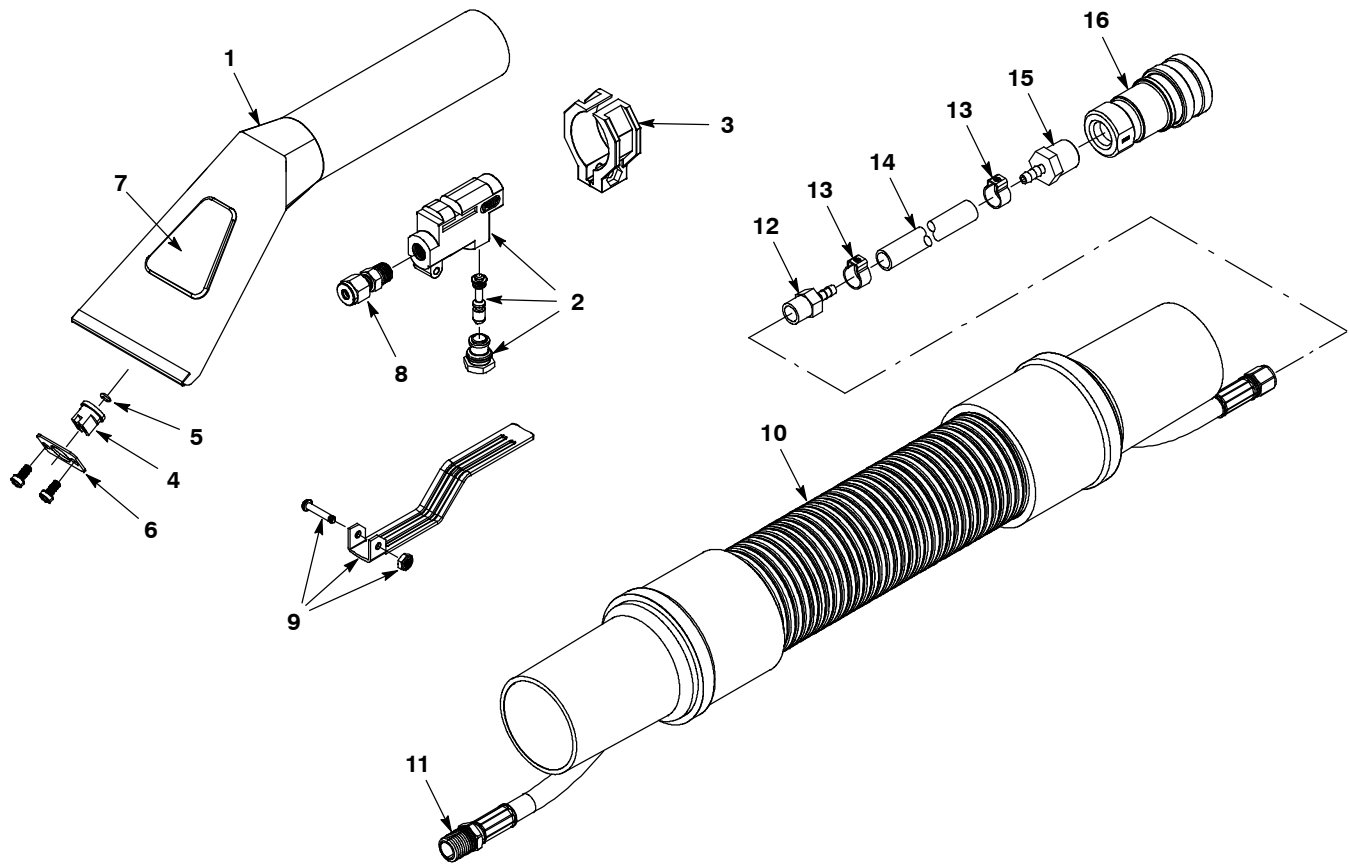
LADDER DIAGRAM, 240V EMC



REF	English LEGEND	Español LEYENDA	Français LÉGENDE
	BLK = Black	Negro	Noir
	BLU = Blue	Azul	Bleu
	BRN = Brown	Marrón	Brun
	GRN = Green	Verde	Vert
	WHT = White	Blanco	Blanc
	ORG= Orange	Naranja	Orange
	RED= Red	Rojo	Rouge
	YEL = Yellow	Yellow	Yellow
	CB1 = Circuit Breaker, 1.5A	Cortacircuitos, 1.5A	Coupe-circuit, 1.5A
	CB2= Circuit Breaker, 1.5A	Cortacircuitos, 1.5A	Coupe-circuit, 1.5A
	D1= Solenoid, Valve Sol.	Válvula de solenoide	Soupape à solénoi'de
	F 1= Filter, RFI #600383	Filtro, RFI	Filtre, RFI
	F 2= Filter, RFI #611474	Filtro, RFI	Filtre, RFI
	L1 = Choke #603641	Filtro	Filtre
	L2 = Choke #603641	Filtro	Filtre
	M1 = Motor, Vacuum	Motor	Moteur
	M2= Motor, Brush	Motor	Moteur
	M3= Motor, Pump	Motor	Moteur
	S1 = Switch, Main	Interruptor	Interrupteur
	S2 = Switch, Trigger	Interruptor	Interrupteur
	R1 = Rectifier, Brush	Rectificador, Cepillo	Redresseur, Brosse

OPTIONS

HAND TOOL GROUP (NEW STYLE)

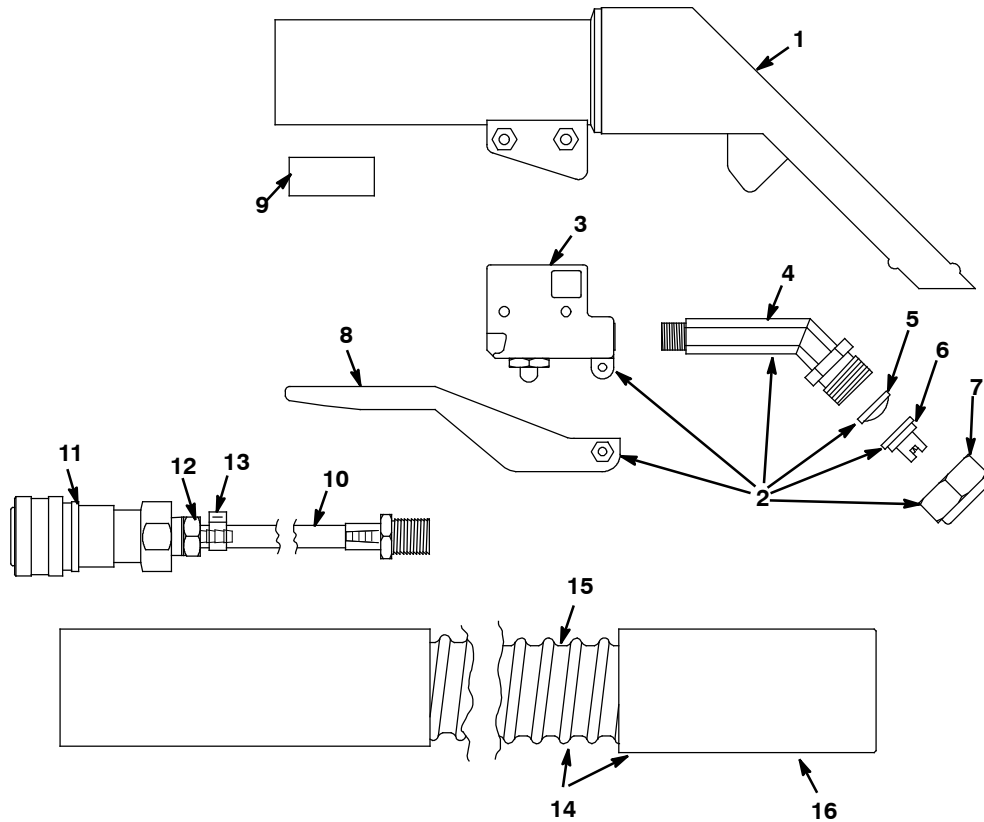


Ref.	Part No.	Serial Number	Description	Qty.
▽	701403	(00000000-) Tool Assy, Hand, W/ Ss Head & Plstc Wndw	1
▲▽	1059230	(00000000-) Tool Assy, W/Trigger F/1058747, Replmt	1
▲▲	1 1059003	(00000000-) Tool, W/ Wndw, Ss, F/1058747, Replmt	1
▲▲	2 611807	(00000000-) Valve, Tool, Hand [Pmf]	1
▲▲	3 611812	(00000000-) Valve, Hanger [Pmf]	1
▲▲	4 1059006	(00000000-) Fitting, Jet, Tee, Plstc, Fr/ 1058747	1
▲▲	5 1059005	(00000000-) Seal, Org, Fr/ 1058747, Replmt	1
▲▲	6 611815	(00000000-) Retainer, Plate [Pmf]	1
▲▲	7 1059004	(00000000-) Tool, Wndw, Plstc, Fr/ 1058747	1
▲▲	8 611817	(00000000-) Ferrule, Pm02/.18tube	1
▲▲	9 611818	(00000000-) Trigger, Handle Pmf	1
▲▽	10 1059130	(00000000-) Hose Assy, 10ft, F/1058747, Replmt	1
▲▲	11 150521	(00000000-) Fitting, Brs, Str, Bm02/Pf02	1
▲	12 150524	(00000000-) Fitting, Brs, Str, Bm02/Pm02	1
▲	13 140349	(00000000-) Clamp, Hose, Ear, .318- .374, Ss	2
▲	14 613471	(00000000-) Hose, Pvc, Brd, 0.12id 0.31od 015.0l (160245)	1
▲	15 150514	(00000000-) Fitting, Brs, Str, Bm02/Pm04 [Taped]	1
▲	16 150913	(00000000-) Fitting, Brs, Qdc, Pf04 [Ser60]	1
▲	N/S 220040	(00000000-) Bag, Hose, Accssry, 24x36[W/Draw String]	1

▽ ASSEMBLY

▲ INCLUDED IN ASSEMBLY

HAND TOOL GROUP (OLD STYLE)



Ref.	Part No.	Serial Number	Description	Qty.
▽	701403	(00000000-) Tool Assy, Hand, W/ Ss Head & Plstc Wndw	1
▲	N/A	(00000000-) Tool, Hand, W/ Trigger Assy (Rpld By P/N 1058747)	1
▲	1	N/A	(00000000-) Tool Hand W/O Trigger Assy R# 608065 (Rpld By P/N 701403)	1
▲▽	2	N/A	(00000000-) Tool, Hand, Trigger Assy (Rpld By P/N 701403)	1
▲▲	3	608894	(00000000-) Fitting, Valve Body, Hand Tool	1
▲▲	4	608895	(00000000-) Fitting, Nozzle, Spray	1
▲▲	5	608900	(00000000-) Screen, Tool, Hand	1
▲▲	6	608896	(00000000-) Fitting, Spray, Tip 11003 Blue	1
▲▲	7	608897	(00000000-) Vr, Nut, Plstc, Spray Tip	1
▲▲	8	608898	(00000000-) Trigger, Hand Tool	1
▲	9	608892	(00000000-) Seal, Hose, Soltn	1
▲	10	606250	(00000000-) Hose, Pvc, Brd, 0.12id 0.31od 105.0l	1
▲	11	150913	(00000000-) Fitting, Brs, Qdc, Pf04 [Ser60]	1
▲	12	150514	(00000000-) Fitting, Brs, Str, Bm02/Pm04 [Taped]	1
▲	13	140349	(00000000-) Clamp, Hose, Ear, .318- .374, Ss	1
▲▽	14	N/A	(00000000-) Hose, Vacuum, 1.25id X 104.0l, 1 cuff, (Rpld By P/N 1059130)	1
▲▲	15	N/A	(00000000-) Hose, Vacuum, 1.25id X 088.0l [I- Helix] (Rpld By P/N 1059130)	1
▲▲	16	N/A	(00000000-) Cuff, Hose, 1.5slip X 1.25thd Blk (Rpld By P/N 1059130)	1
▲	N/S	220040	(00000000-) Bag, Hose, Accssry, 24x36[W/Draw String]	1

▽ ASSEMBLY

▲ INCLUDED IN ASSEMBLY