

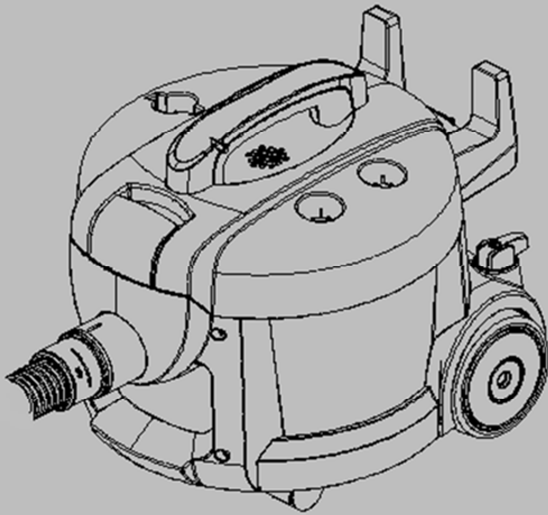


V6

Canister Dry Vacuum Cleaner 圆桶形干式真空吸尘器

Operator and Parts Manual **EN**

操作与零部件手册 **CN**



Model Part No. :
型号部件编号:
1070777 – V6 220-240V CN



www.tennantco.com/manuals

9009725
Rev.03 (01-2017)

Introduction

This manual is furnished with each new model. It provides necessary operation and maintenance instructions and replacement parts information.



Read all instructions before using machine.

Intended Use

This canister dry vacuum cleaner is suitable for picking up dry, non-flammable dust and debris in an indoor environment. It is not suitable for picking up liquids or hazardous materials.

General Information

This machine will provide excellent service. However, the best results will be obtained at minimum costs if:

- The machine is operated with reasonable care.
- The machine is maintained regularly - per the machine maintenance instructions provided.
- The machine is maintained with manufacturer-supplied or equivalent parts.

**Protect the Environment**

Please dispose of packaging materials and used machine components in an environmentally safe way according to local waste disposal regulations. Always remember to recycle.

Machine Data

Please fill out at time of installation for future reference.

Model No. - _____

Serial No. - _____

Installation Date - _____

Technical Specifications

Model	V6
Voltage	220-240V
Frequency	50-60Hz
Rated Power	1200W
Airflow Rate	40 l/s
Bag Capacity	9 L
Power Cord Length	12m
Filtration (HEPA)	99.95% @ 0.3 micron
Weight	7.6 kg
Size (Height x Width)	36 x 40cm
Sound Pressure Level L_{pA}	59.7 dBA @ 1.5m
Sound Uncertainty K_{pA}	1.645 dBA
Sound Power Level L_{wA} + uncertainty K_{wA}	73 dBA
Constructions Class	II
Vibrations at Controls	<2.5 m/s ²
Protection Grade	IP20

Tennant Company
PO Box 1452, Minneapolis, MN 55440 USA
Phone: (800) 553-8033 or (753) 513-2850
www.tennantco.com

Tennant Cleaning Systems & Equipment Co., Ltd
Building 1, No. 3777 Caoying Road
Qingpu Shanghai, China 201712
phone: (86-21) 6922-53333
fax: (86-21) 6922-5151
www.tennantco.com.cn

Original Instructions. Copyright ©2012 Tennant Company.
All rights reserved. Printed in China.
Specifications and parts are subject to change without notice.

IMPORTANT SAFETY INSTRUCTIONS

This symbol warns the operator of hazards and unsafe practices which could result in severe personal injury or death.



WARNING - To reduce the risk of fire, electric shock, or injury:

1. Do not leave appliance when plugged in.
2. Unplug cord from outlet when not in use and before servicing.
3. Do not use outdoors or on wet surfaces. This machine is for indoor and dry use only.
4. Do not allow to be used as a toy. Close attention is necessary when used by or near children.
5. Use only as described in this manual. Use only manufacturer's recommended attachments.
6. Operators shall be adequately instructed on the use of this machine.
7. This machine is not intended for use by persons (including children) with reduced physical, sensory or mental capabilities, or lack of experience and knowledge, unless they have been given supervision or instruction concerning use of the appliance by a person responsible for their safety.
8. Do not use with damaged cord or plug. Regularly inspect cord and plug for damage. If the cord is damaged, it must be replaced by the manufacturer, its service agent or a similarly qualified person in order to avoid a hazard.
9. Do not pull or carry by cord, use cord as handle, close a door on cord, or pull cord around sharp edges or corners. Do not run appliance over cord. Keep cord away from heated surfaces.
10. Do not unplug by pulling on cord. To unplug, grasp the plug, not the cord.
11. Do not handle plug or appliance with wet hands.
12. Connect to a properly grounded outlet only.
13. Make sure the power voltage corresponds with the voltage shown on the machine's rating plate.
14. Do not put any object into openings. Do not use with any opening blocked; keep free of dust, lint, hair, and anything that may reduce air flow.
15. Keep hair, loose clothing, fingers, and all parts of body away from openings and moving parts.
16. Turn off all controls before unplugging.
17. Do not use to pick up flammable or combustible liquids, such as gasoline, or use in areas where they may be present.
18. Do not pick up any type of fluid, hazardous dust or toxic materials.
19. Do not pick up anything that is burning or smoking, such as cigarettes, matches, or hot ashes.
20. Use extra care when cleaning on stairs.
21. Do not use without dust bag and/or filters in place.
22. If using an extension cord make sure the cord rating is suitable for this machine.
23. Do not modify machine from its original design.
24. Keep children and unauthorized persons away from the machine when in use.
25. All repairs must be performed by a qualified service person. Use only manufacturer-supplied or equivalent replacement parts.
26. Do not expose to rain or moisture. Store indoors only.

SAVE THESE INSTRUCTIONS**Storage and Transporting**

Carefully wrap power cord around machine's cord hooks and store machine in a dry indoor environment. Do not expose machine to rain or moisture. Lift machine by the carrying handle to transport.

Name of parts	Hazardous Substance					
	Lead (Pb)	Mercury (Hg)	Cadmium (Cd)	Hexavalent chromium Cr(VI)	Polybrominated biphenyls (PBB)	Polybrominated diphenyl ethers (PBDE)
PCBA and assmy	X	O	O	O	O	O
Motor	O	O	O	O	O	O
Cover	O	O	O	O	O	O
Other	O	O	O	O	O	O
This form is prepared in accordance with SJ/T11364.						
O Indicating that the content of all hazardous substances in the uniformity of the material in the GB / T26572 below limit requirements						
X Indicates that the hazardous substance is present in at least one homogeneous material of the part in excess of the limits specified in GB / T26572						

介绍

本手册提供各款最新型号的说明。它提供必要的操作和维护说明，以及更换备件的信息。



在使用本机器之前，请阅读所有的说明。

用途

这台圆桶形干式真空吸尘器适合于在室内环境中吸取干燥的、不易燃的粉尘和碎屑。它不适合用于吸取液体或具有危险性的物质。

一般信息

这台机器将为您提供卓越的服务。不过，只有遵循以下事项，才能获得经济划算的效果：

- 操作这台机器时应合理注意。
- 应按照各项机器保养说明定期对这台机器进行维护。
- 应采用制造商提供的配件或相应的配件对这台机器进行维护。

**保护环境**

请依据当地的废物处理条例，以环保的方法处理包装材料和用过的机器零件。
请一直记得要循环利用。

机器数据

请在安装时填写以下数据，以便将来参考。

型 号 - _____
序列号- _____
安装日期 - _____

技术规格

型号	V6
电压	220-240V
频率	50-60Hz
额定功率	1200W
气流速率	40 l/s
袋子容积	9 L
电源线长度	12m
过滤 - HEPA	99.95% @ 0.3 micron
重量	7.6 kg
尺寸（高度 X 宽度）	36cm x 40cm
声压水平 L_{pA}	59.7 dBA @ 1.5m
声音不确定度 K_{pA}	1.645 dBA
声功率级 L_{WA} + 声音不确定度 K_{WA}	73 dBA
结构等级	II
控制部分的振动	<2.5 m/s ²
防护等级	IP20

坦能清洁系统设备（上海）有限公司
中国上海青浦漕盈路 3777 号 1 幢 201712
电话：(86-21) 6922-53333
传真：(86-21) 6922-5151
www.tennantco.com.cn
原版说明书。版权所有 ©2012 坦能公司
不得翻印。在中国印制。
规格和零件若有更改，恕不另行通知。

重要的安全说明

该符号警告操作者有危险，不安全的操作可能会导致严重的人身伤害或死亡事故。



警告 -- 为了减少火灾、触电或其它伤害的危险：

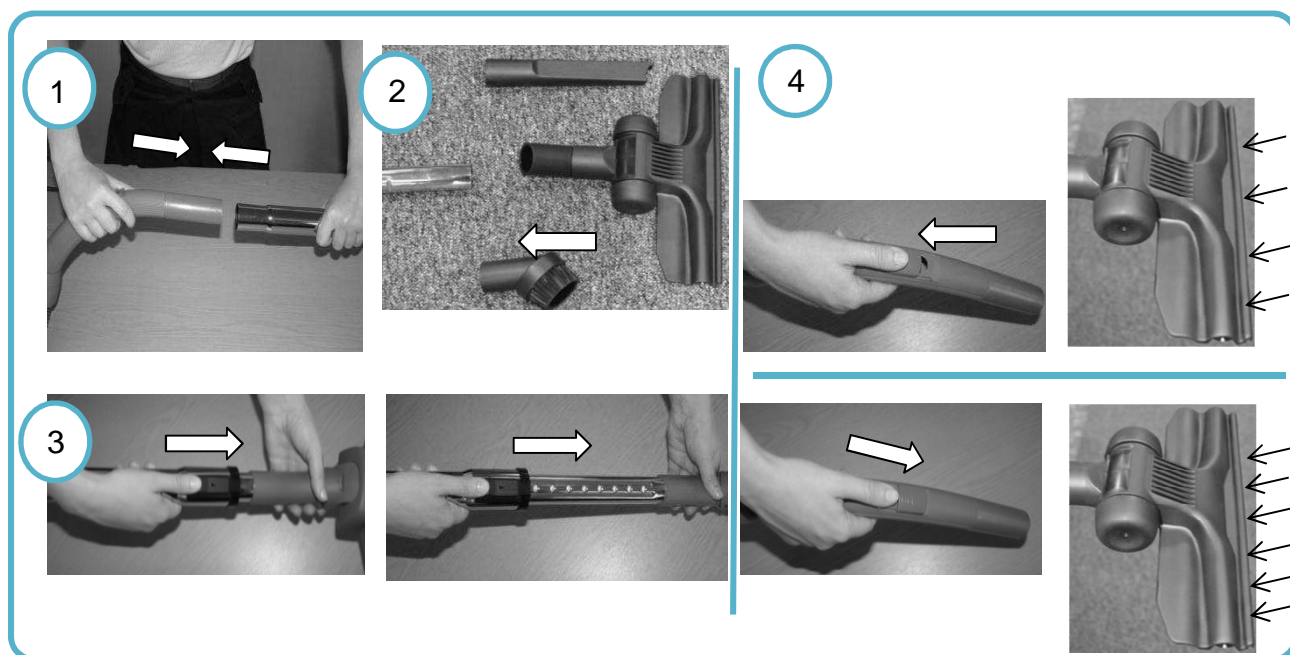
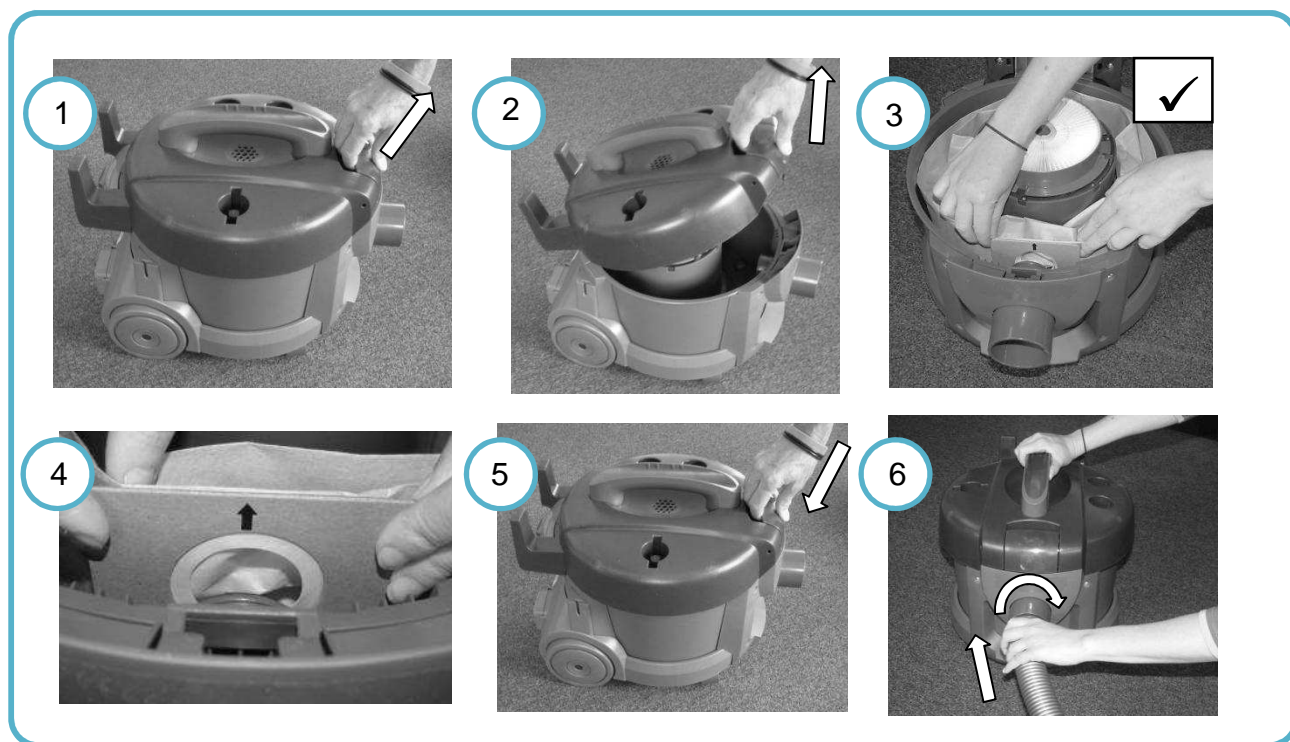
1. 当插上电源之后，请不要离开机器。
2. 如果不用时或进行维修之前，请拔出电源插头。
3. 请不要在室外或潮湿的表面上使用。本机器仅能在室内且干燥的环境中使用。
4. 请不要将本机器当作玩具。当附近有小孩时，应特别留意。
5. 请仅按照说明书所描述的用途进行使用。请仅采用制造商所推荐的配件。
6. 操作者应充分了解怎样使用本机器。
7. 本机器不适用于由以下人员（包括儿童）进行操作：身体有障碍、感觉或精神能力有缺陷、或缺乏足够的经验和知识，除非他们的安全负责人就电器使用对其进行监督或指导。
8. 请不要使用破损的电源线或插头。请定期检查电源线和插头是否有损坏。如果发现电源线有破损，为防范出现危险，必须由制造商或其服务代理商或类似有资格的人员进行更换。
9. 请不要用电源线拽或拖动机器，或把电源线当作提手，或使门挤压电源线，或在尖锐的边缘或转角处拉动电源线。请不要使本机器压在电源线上运转。请使电源线远离热的表面。
10. 请不要用拽电源线的方式拔出插头。为了拔出插头，请用手抓住插头，而不是用电源线。
11. 请不要用湿手插拔插头或操作本机器。
12. 请仅使用具备适当接地的接线板。
13. 请确认电源电压符合机器铭牌上的额定电压。
14. 请不要将任何物体放入吸口中。当吸口被阻塞时，请不要使用；清除粉尘、短绒、头发和任何会降低空气流量的物体。
15. 请注意头发、宽松的衣服、手指和身体的任何部位应远离吸口和运转部件。
16. 在拔出插头之前，请关闭所有的控制部分。
17. 请不要吸取可燃或易燃的液体（比如：汽油），或在上述液体存在的环境中使用。
18. 请不要吸取任何类型的液体，有害的粉尘或有毒的物质。
19. 请不要吸取任何正在燃烧或冒烟的物体，比如：香烟、火柴、或烫的灰烬。
20. 当清洁楼梯时，要格外留意。
21. 若未放置集尘袋和/或过滤器，请不要使用。
22. 如果使用延长的电源线，请确认电源线的额定值要适合本机器。
23. 请不要修改本机器的原始设计。
24. 当使用时，请让儿童和未经授权的人员远离本机器。
25. 必须由够资格的服务人员进行维修。仅能采用由制造商提供的更换备件或相应备件。
26. 请不要暴露在雨中或湿气中。仅能存放在室内。

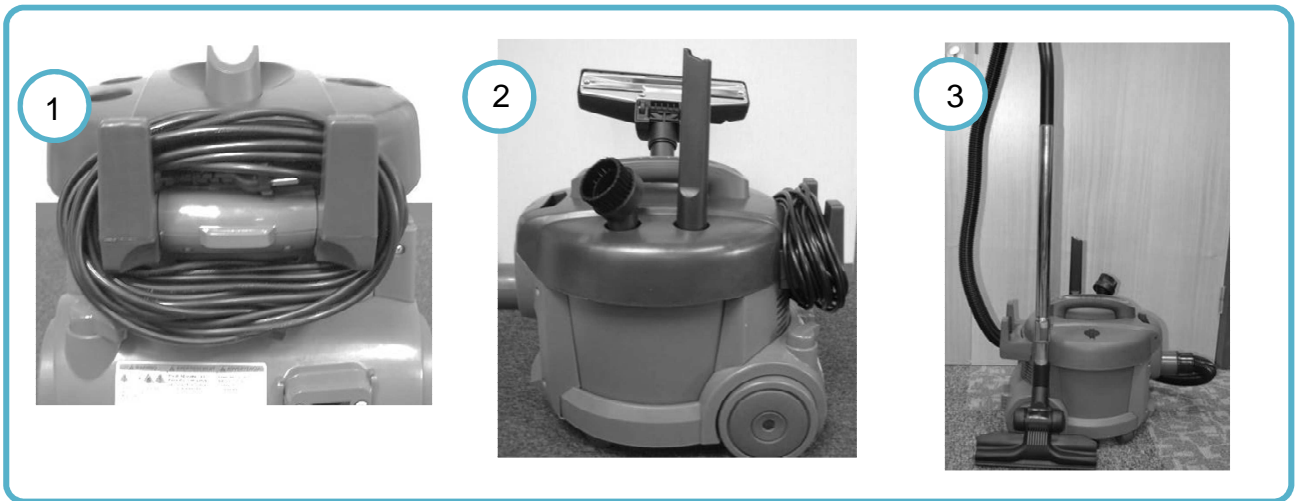
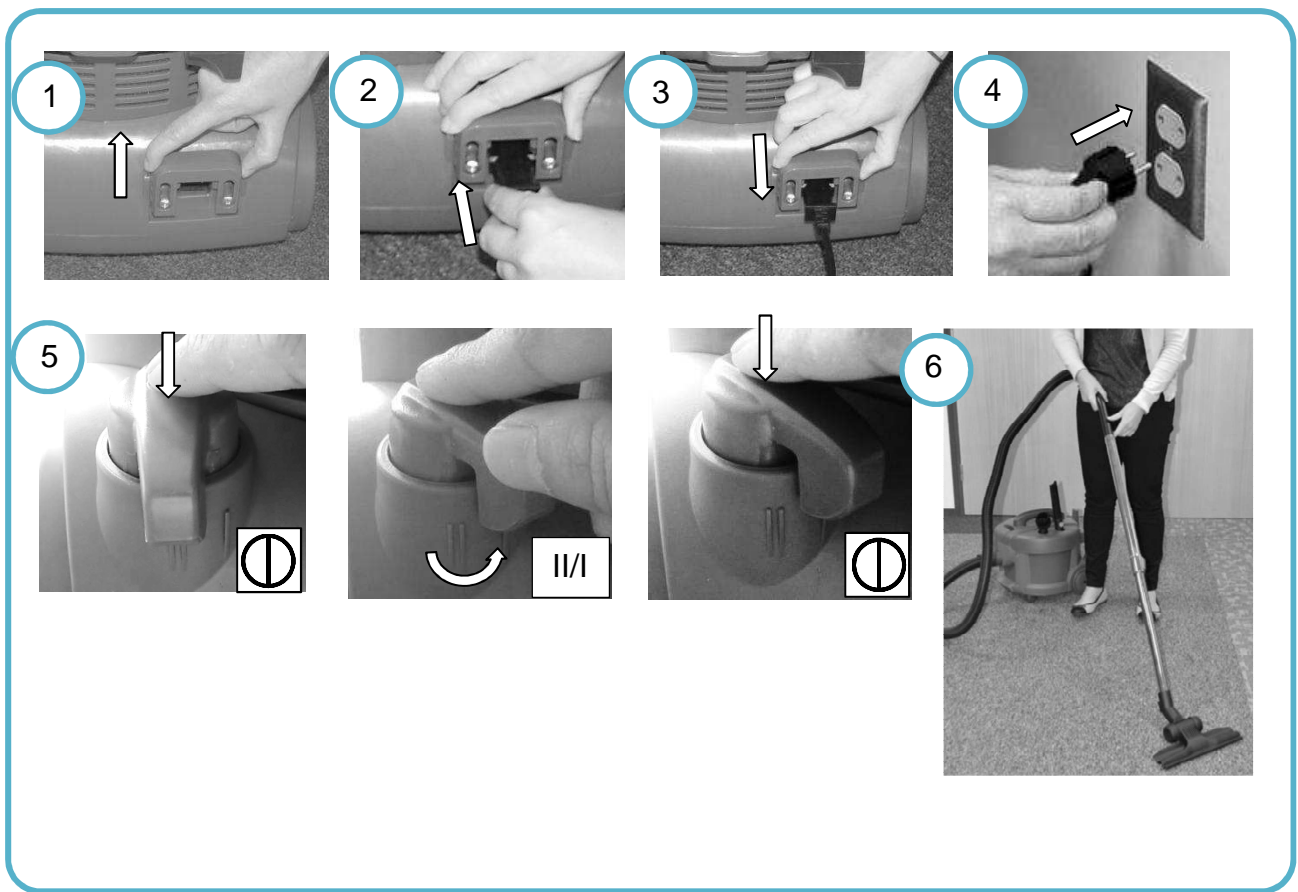
遵循这些说明**存放和搬运**

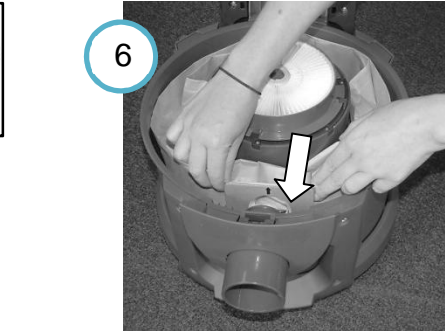
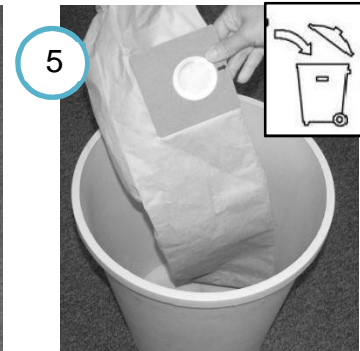
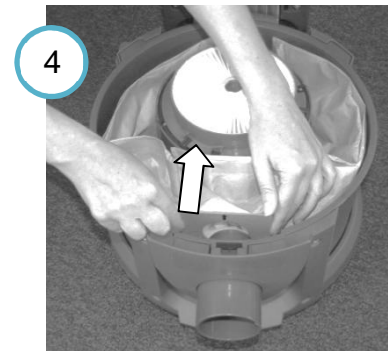
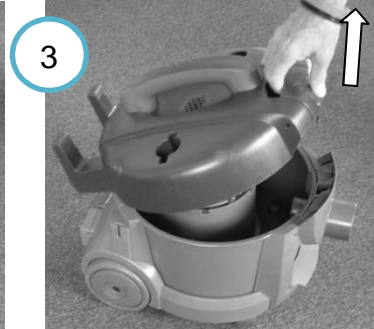
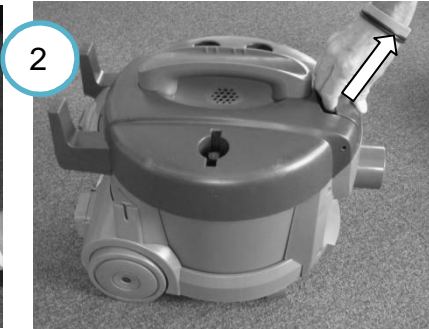
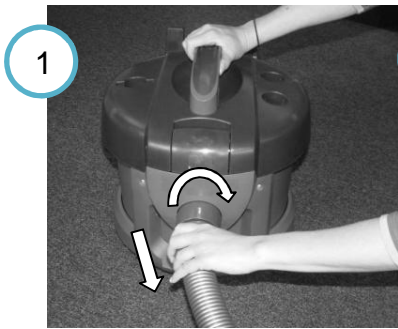
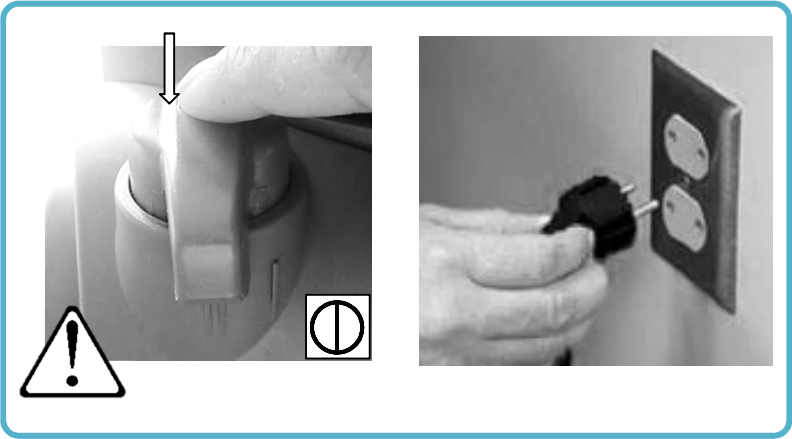
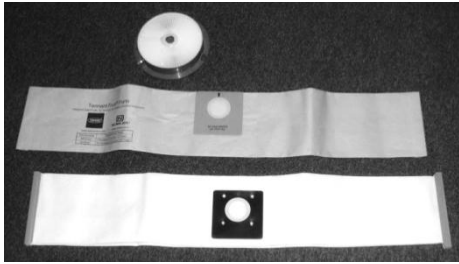
请仔细地将电源线绕在机器的电源线槽上，并将机器存放在干燥的室内环境中。请不要将机器暴露在雨中或湿气中。请使用提手抬动物器进行搬运。

部件名称	有害物质					
	铅 (Pb)	汞 (Hg)	镉 (Cd)	六价铬 (Cr(VI))	多溴联苯 (PBB)	多溴二苯醚 (PBDE)
PCBA及组件	X	O	O	O	O	O
电机	O	O	O	O	O	O
外壳	O	O	O	O	O	O
其他配件	O	O	O	O	O	O
本表格依照SJ/T11364的规定编制。						
O: 表示该有害物质在该部件所有均匀材料的含量均在GB/T26572规定的限量要求以下。						
X: 表示该有害物质至少在该部件的某一均质材料中的含量超出GB/T26572规定的限量要求						



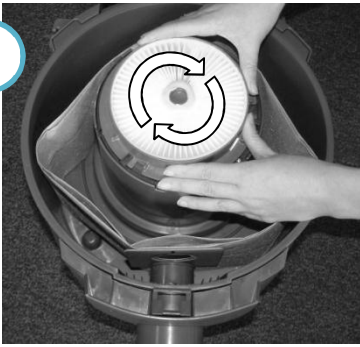




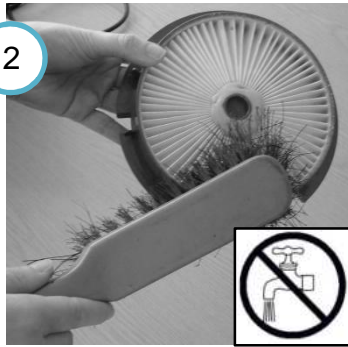


HEPA

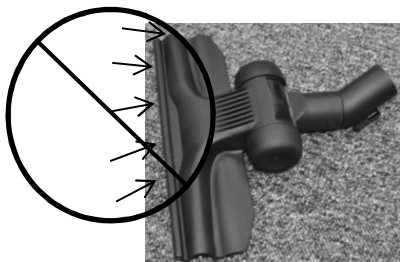
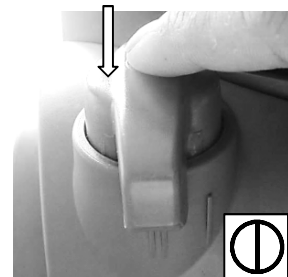
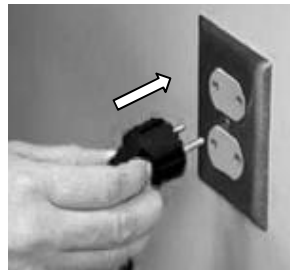
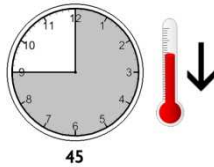
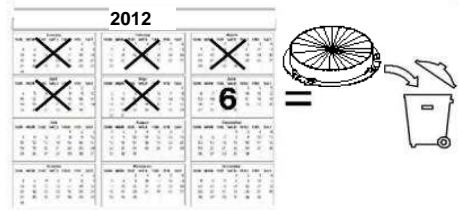
1



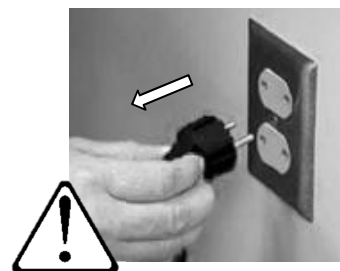
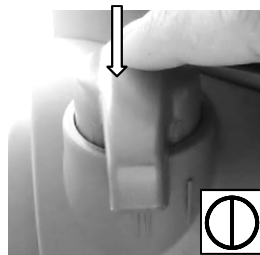
2



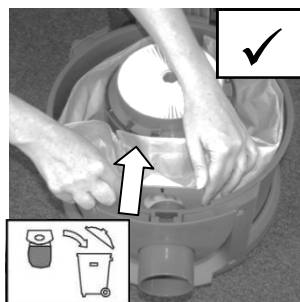
3



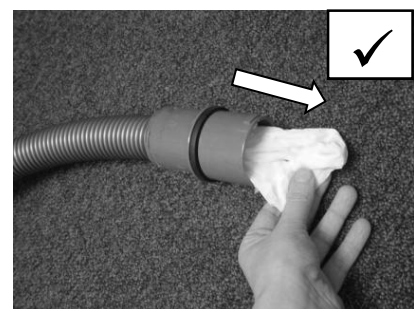
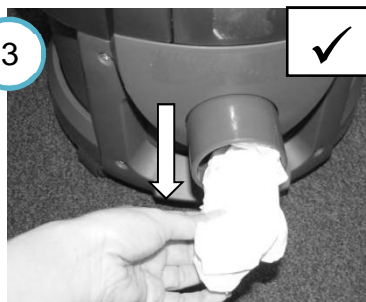
1



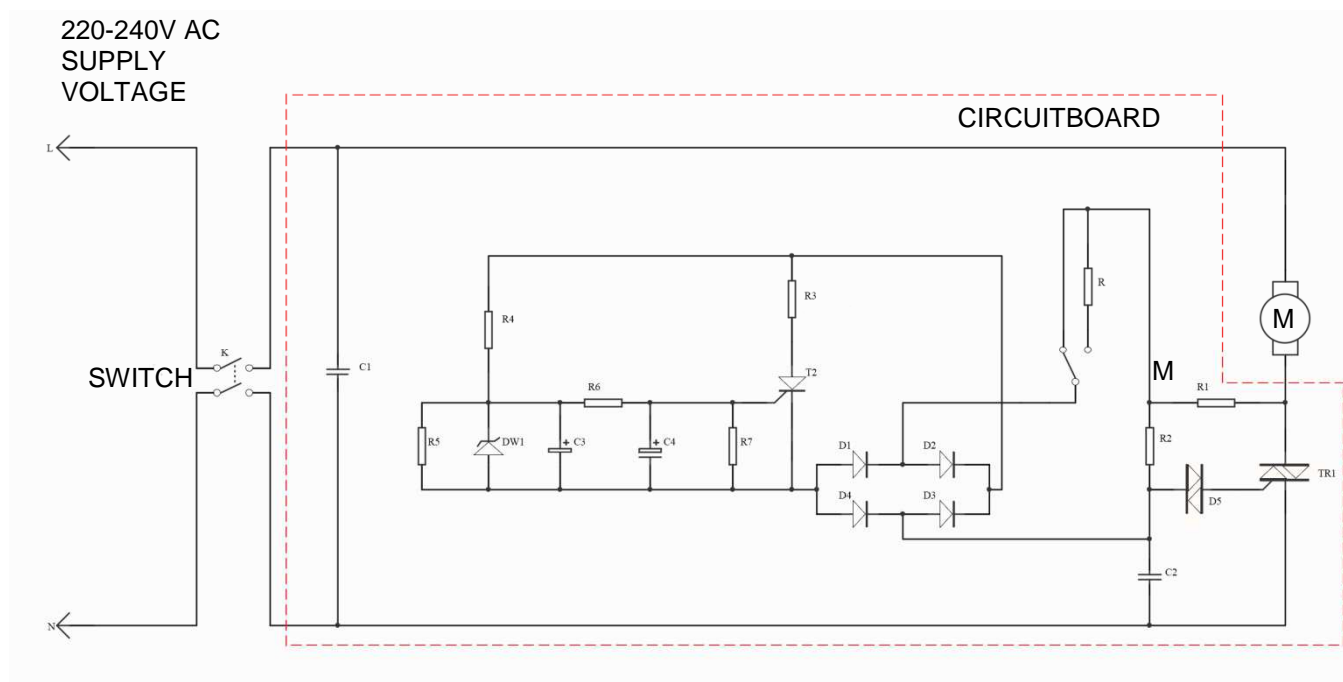
2



3



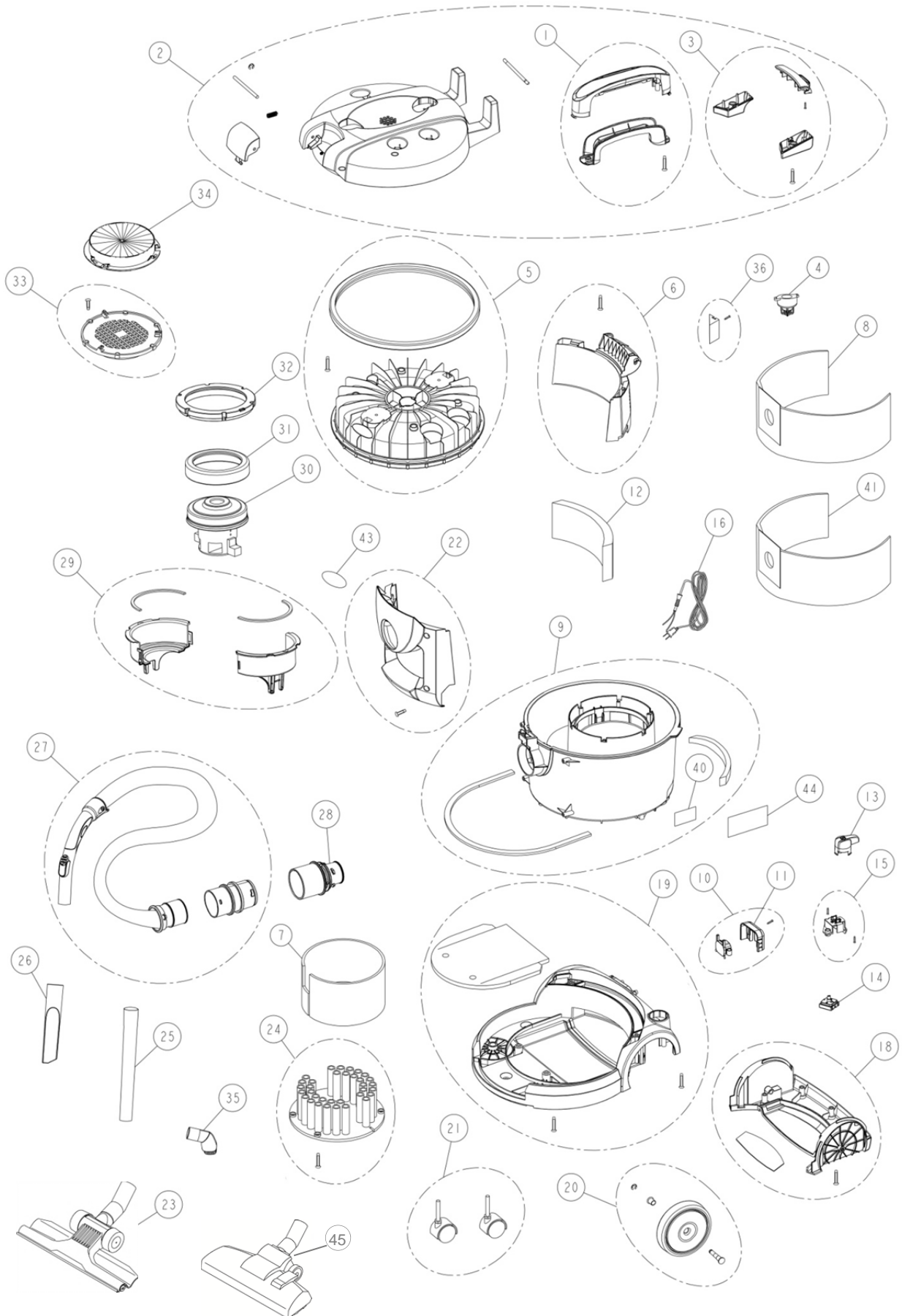
Electrical Diagram



Recommended Spare Parts

V6	
9009784	BAG, VACUUM [1PKG=12 BAGS]
9009775	FILTER, HEPA
9009893	HOSE ASSY
9009769	TOOL, CREVICE
9009771	TOOL, BRUSH, DUST
9013472	TOOL, PICKUP, FLOOR, GULPER, 1.25D, 11W (Standard)
9013362	TOOL, PICKUP, FLOOR, ADJ, 1.25D, 10.5W (Optional)
9009794	CORD ASSY, POWER, YEL [CN]
9009895	BAG, CLOTH (OPTION)

V6 Parts List



V6 Parts Lists

Ref.	Part No.	Description	Qty.
1	9009741	HANDLE KIT, REPLMT (Includes 2-ST5x23 Screw)	1
2	9009778	COVER ASSY, KIT, REPLMT (Includes 2-ST5x23 Screw, 2-ST4x20 Screw, 2-ST5x15 Screw)	1
3	9009779	HINGE KIT, COVER, REPLMT (Includes 2-ST4x20 Screw, 2-ST5x15 Screw)	1
4	9009780	VALVE KIT, SAFETY	1
5	9009781	LID KIT, REPLMT (Includes 4-ST5x15 Screw)	1
6	9009782	COVER KIT, OUTLET, AIR (Includes 2-ST5x37 Screw)	1
7	9009783	INSULATION, ACSTC, MOTOR	1
8	9009784	BAG, VACUUM [1PKG=12 BAGS]	1
9	9011435	BODY KIT, REPLMT, w/ WARN LABEL [CN, V6]	1
10	9010896	RETAINER KIT, PLUG (Includes 2-ST4x10 Screw, 2-ST4x16 Screw)	1
11	9009787	RETAINER, PLUG	1
12	9009788	FILTER, AIR, OUTLET	1
13	9009789	SWITCH, BTN	1
14	9009790	SWITCH	1
15	9009791	HOUSING, SWITCH (Includes 2-ST4x16 Screw)	1
16	9009794	CORD ASSY, POWER, YEL [CN]	1
18	9009796	COVER KIT, BASE, REPLMT (Includes 4-ST5x37 Screw, 1-LZ5x37 Screw)	1
19	9009977	BASE KIT, REPLMT [CN] (Includes 3-ST5x15 Screw, 2-ST5x23 Screw)	1
20	9009798	WHEEL ASSY	1
21	9009799	CASTER ASSY	2
22	9009891	PLATE, SUC, REPLMT (Includes 4-ST5x15 Screw)	1
23	9013472	TOOL, PICKUP, FLOOR, GULPER, 1.25D, 11W (Standard)	1
24	9009892	INSULATION, ACSTC (Includes 2-ST5x16 Screw, 1-ST3x8 Screw)	1
25	9009770	TUBE, EXTN	1
26	9009769	TOOL, CREVICE	1
27	9009893	HOSE ASSY, REPLMT	1
28	9009894	BODY, SUC, REPLMT	1
29	9009756	HOUSING KIT, MOTOR, OUTER, REPLMT	1
30	9009754	MOTOR, VACUUM, REPLMT, 230V	1
31	9009758	SEAL KIT, MOTOR, LOWER	1
32	9009759	SEAL KIT, MOTOR HSNG, OUTER	1
33	9009761	GRILL, AIR, INLET (Includes 6-ST4x16 Screw)	1
34	9009775	FILTER, HEPA	1
35	9009771	TOOL, BRUSH, DUST	1
36	9009970	TOOL HOLDER KIT (Includes 1-ST5x15 Screw)	1
40	1071204	LABEL, WARNING [EN/CN]	1
41	9009895	BAG, CLOTH	1
43	1071196	LABEL, LOGO, 03.375L WHT/TL [TENNANT]	1
44	1071198	LABEL, MODEL [V6]	1
45	9013362	TOOL, PICKUP, FLOOR, ADJ, 1.25D, 10.5W (Optional)	1
Not shown	9010858	CIRCUITBOARD [230V]	1