

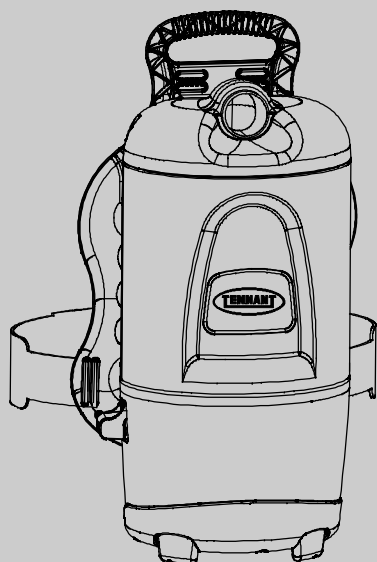


V-BP-7

Backpack Vacuum Cleaner
背包真空吸尘器

Operator and Parts Manual (EN)

操作和零件手册 (CN)



Model Part No.:

型号零件号:

1215372 - V-BP-7, 220V/50Hz CN



For latest manuals and other
language Operator manuals, visit:

有关最新部件手册或其他操作员语言手册，请访问：

www.tennantco.com/manuals

Tennant Cleaning Systems & Equipments Co., Ltd
Building 1, No. 3777 Caoying Road
Qingpu Shanghai, China 201712

坦能清洁系统设备（上海）有限公司
中国上海青浦漕盈路3777号1幢201712

www.tennantco.com.cn

9013394
Rev. 03 (02-2019)

This manual is furnished with each new model. It provides necessary operation and maintenance instructions and replacement parts information.



Read all instructions before using machine.

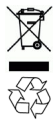
Intended Use - This backpack dry vacuum cleaner is intended to pick up dry dirt, debris and dust in an indoor environment and is not constructed for any other use. The pick up of any type of fluid or hazardous materials is prohibited. Only use accessories intended for machine.

This machine will provide excellent service. However, the best results will be obtained at minimum costs if:

- The machine is operated with reasonable care.
- The machine is maintained regularly - per the machine maintenance instructions provided.
- The machine is maintained with manufacturer supplied or equivalent parts.

To view, print or download manuals online, visit www.tennantco.com/manuals

Protect the Environment



Please dispose of packaging materials, old machine components in an environmentally safe way according to local waste disposal regulations.

Always remember to recycle.

Machine Data

Please fill out at time of installation for future reference.

Model No. - _____

Serial No. - _____

Installation Date - _____

Technical Specifications

Model	V-BP-7
Voltage	220V
Frequency	50Hz
Rated Power	1400W / 6.3A
Airflow	50.5 L/s
Bag capacity	5.7 L
Size (Height x Width x Depth)	533mm x 241mm x 178mm
Size (Height x Width x Depth) w/ Harness	584mm x 279mm x 330mm
Weight	5 kg
Cable Length	15m
Filtration - HEPA	99.97% @0.3 micron
Sound Pressure Level L_{pA}	<70 dBA
Protection Grade	IP20

SAFETY LABEL

Replace warning label if missing or becomes damaged or illegible.

⚠ WARNING

TO REDUCE THE RISK OF FIRE, ELECTRIC SHOCK, OR INJURY:

- Do Not Use Near Flammable Liquids, Vapors or Combustible Dusts.
- Do Not Pick Up Flammable or Toxic Materials and Burning Debris.
- Do Not Operate With Damaged Power Cord. Do Not Modify Plug.
- Unplug Power Cord Before Cleaning or Servicing Machine.
- Do Not Use Outdoors or On Wet Surfaces. Do Not Expose To Rain.

⚠ 警告

降低火灾、电击或伤害危险的做法：

- 不要在靠近可燃液体、蒸气或易燃尘埃的地方使用。
- 请勿拾取易燃或有毒材料、燃烧或冒烟的垃圾或危险的粉尘。
- 不要操作损坏的电源线。不要修改电源线插头。在清理或维修机器前拔出电源线插头。
- 不要在室外或潮湿的地面上使用。不要暴露在雨中。室内存放。

1071204

Tennant Cleaning Systems & Equipments Co., Ltd
Building 1, No. 3777 Caoying Road
Qingpu Shanghai, China 201712

坦能清洁系统设备（上海）有限公司
中国上海青浦漕盈路3777号1幢201712

phone / 电话: 86 21 6922 53333

fax / : 传真 86 21 69225151

www.tennantco.com.cn

Specifications and parts are subject to change without notice.
Original Instructions. Copyright ©2015-2019 Tennant Company,
Printed in China. All rights reserved.

IMPORTANT SAFETY INSTRUCTIONS



This symbol warns the operator of hazards and unsafe practices which could result in severe personal injury or death.



WARNING - To reduce the risk of fire, explosion, electric shock, or injury:

1. Do not use unless trained and authorized.
2. Do not use machine with flammable liquids.
3. Do not use machine in the presence of flammable or combustible liquids/fumes/dusts.
4. Do not pick up any type of fluid, hazardous dust or toxic materials.
5. Do not use outdoors or on wet surfaces.
6. Unplug the vacuum cleaner immediately from mains supply if it is not working properly, if it has been dropped or damaged, if the vacuum cleaner came in contact with flammable liquids, combustible liquids/fumes/dusts, if you pick up any type of fluid, hazardous dust or toxic materials. Return the appliance to the nearest authorized dealer or service center for examination, repair, electrical or mechanical adjustment.
7. Do not leave machine unattended when plugged in.
8. Do not handle plug or machine with wet hands.
9. Unplug from socket outlet before assembly, adjustment, changing accessories, user maintenance, cleaning and when not in use. Do not use with damaged cord or plug. If the cord is damaged, it must be replaced by the manufacturer, its service agent or a similarly qualified person in order to avoid a hazard.
10. Do not pick up anything that is burning or smoking.
11. Use only as described in this manual.
12. Do not close a door on cord, or pull cord around sharp edges or corners. Do not run appliance over cord. Keep cord away from heated surfaces.
13. Do not unplug by pulling on cord.
14. Keep hair, loose clothing, fingers, and all parts of body away from openings and moving parts.
15. Do not put any object into openings. Do not use with any opening blocked.
16. Do not allow to be used as a toy.
17. Use extra care when cleaning on stairs.
18. Do not use without dust bag and/or filters in place.
19. Do not use additional extension cords.
20. Do not modify machine from its original design.
21. Turn off all controls before unplugging.
22. This machine is not intended for use by persons (including children) with reduced physical, sensory or mental capabilities, or lack of experience and knowledge, unless they have been given supervision or instruction concerning use of the machine by a person responsible for their safety.
23. Children should be supervised to ensure that they do not play with machine.
24. After use ensure the machine is unplugged from the mains supply and wipe surface with a damp cloth.
25. Store the vacuum indoors at a dry location. Do not store it in an elevated location, for example a rack.

SAVE THESE INSTRUCTIONS

Name of parts	Hazard Substance					
	Pb & its compound	Hg & its compound	Cd & its compound	Cr (VI) and its compound	PBB	PBDE
Plastic Components	X	O	O	O	O	O
Hardware alloy	O	O	O	O	O	O
Host circuit module	O	O	O	O	O	O
Battery	O	O	O	O	O	O
Power cord w/plug	O	O	O	O	O	O
O : Indicates that the content of the hazardous substance in all homogeneous materials of the part is below the limit requirement specified in the current valid version of GB/T 26572						
X : Indicates that the content of the hazardous substance in at least one of the homogeneous materials of the part exceeds the limit requirement stipulated in the current effective version of GB/T 26572, and there is no mature alternative in the industry, which meets the environmental protection requirements of the EU ROHS directive.						



The number in this logo indicates that the environmental protection period under normal use is 10 years.
GB4706.1-2005 GB4706.7-2014
GB4343.1-2009 GB17625.1-2012

每个新机型均随附本手册。本手册提供了必要的操作和维护说明以及部件清单。



使用机器前请阅读所有说明

用途

室内环境中收集干性污垢、碎屑和尘土专用，不得作其他用途。禁止用本机器收集任何液体或危险性物质。仅可使用机器专用的配件。

本机器将提供优质的服务。但是，如能做到以下几点，您将能够以用最低成本获得最佳效果：

- 谨慎操作机器。
- 定期维护机器—根据提供的机器维护说明。
- 使用厂家提供的或等价的部件维护机器。

保护环境



请根据当地废弃物处置规定，以环保的方式处置包装材料 and 用旧的机器组件。

务必将其回收。

机器数据

请在安装时填写，以供日后参考。

型号 - _____
 序列号 - _____
 安装日期 - _____

技术规格

型号	V-BP-7
电压	220V
频率	50Hz
额定功率	1400W / 6,3A
气流	50,5 L/s
尘袋容积	5,7 L
高度 x 宽度 x 深度	533mm x 241mm x 178mm
高度 x 宽度 x 深度 以线束	584mm x 279mm x 330mm
线长	5 kg
线长	15m
过滤 - HEPA	99,97% @0,3 微米
噪音水平	<70 dBA
防护等级	IP20

如果标签遗失、损毁或难以辨识，请更换标签。



重要安全说明



号警告操作者存在危险和不安全操作，可能导致严重的人身伤害甚至死亡。



警告—降低火灾、爆炸、电击或伤害危险的做法：

1. 未经培训或授权不得使用本机器。
2. 可燃性液体不得用于本机器。
3. 存在可燃性或易燃性液体/烟尘/粉尘时，不得使用本机器。
4. 不得将本机器用于收集任何液体、危险性粉尘或有毒物质。
5. 不得用于室外或潮湿表面。
6. 在下列情况下应立即将真空吸尘器的电源插头从插座拔出：真空吸尘器没有正常工作；真空吸尘器跌落或受损；真空吸尘器接触可燃液体或者易燃液体/烟尘/粉尘；真空吸尘器吸入任何类型的液体、有害粉尘或有毒物质。将真空吸尘器送到最近的授权经销商或服务中心进行检查、维修或者电气或机械调整。
7. 机器通电时必须有人看管。
8. 不得用潮湿的手接触插头或机器。
9. 在进行组装、调整、更换配件、维护和清洁之前以及不使用时，应将真空吸尘器的电源插头从插座拔出。如果电缆或插头受损，切勿使用真空吸尘器。如果电缆受损，必须由制造商、服务代理或具有类似资质的人员进行更换以避免危险。
10. 不得用机器收集正在燃烧或冒烟的物体。
11. 按照本手册的说明使用机器。
12. 不得将电线夹在门缝中，或绕过尖锐的边缘或转角。不得将电器放在电线上。电线须远离发热表面。
13. 拔下插头时不得直接拉电线。
14. 头发、宽松的衣服、手指以及身体任何部位应远离出口和移动部件。
15. 不得将任何物体放入出口。出口堵塞时不得使用机器。
16. 不得将机器作为玩具。
17. 在楼梯上使用请多加小心。
18. 集尘袋和/或过滤器位置错误时不得使用。
19. 不要使用额外的扩展线。
20. 不得改变机器的原始设计。
21. 拔下插头前关闭所有控制装置。
22. 除非得到安全负责人关于机器使用的监督或说明，否则体能、感官、智力较差或缺乏经验与了解的人（包括儿童）不得使用本机器。
23. 应监督儿童以确保他们不会玩耍真空吸尘器。
24. 在使用后，务必将真空吸尘器的电源插头从插座拔出，然后用湿布擦拭表面。
25. 将真空吸尘器存放于室内干燥位置。切勿将其存放于较高位置，例如不能存放在架子上。未经培训或授权不得使用本机器。

请妥善保管本说明

有害物质	有害物质					
	铅 (Pb) 及其化合物	汞 (Hg) 及其化合物	镉 (Cd) 及其化合物	六价铬 (Cr(VI)) 及其化合物	多溴联苯 (PBB)	多溴二苯醚 (PBDE)
塑胶件	X	O	O	O	O	O
五金件 (合金)	O	O	O	O	O	O
主机电路模块	O	O	O	O	O	O
电池	O	O	O	O	O	O
插头电源线 (金属)	O	O	O	O	O	O
O: 表示该有害物质在该部件所有均质材料中的含量均在 GB/T 26572 现行有效版本规定的限量要求以下。						
X: 表示该有害物质至少在该部件的某一均质材料中的含量超出 GB/T 26572 现行有效版本规定的限量要求，且目前业界没有成熟的替代方案，符合欧盟ROHS指令环保要求。						

Tennant Cleaning Systems & Equipments Co., Ltd
 Building 1, No. 3777 Caoying Road
 Qingpu Shanghai, China 201712

坦能清洁系统设备（上海）有限公司
 中国上海青浦漕盈路3777号1幢201712

phone / 电话: 86 21 6922 53333

fax / : 传真86 21 69225151

www.tennantco.com.cn

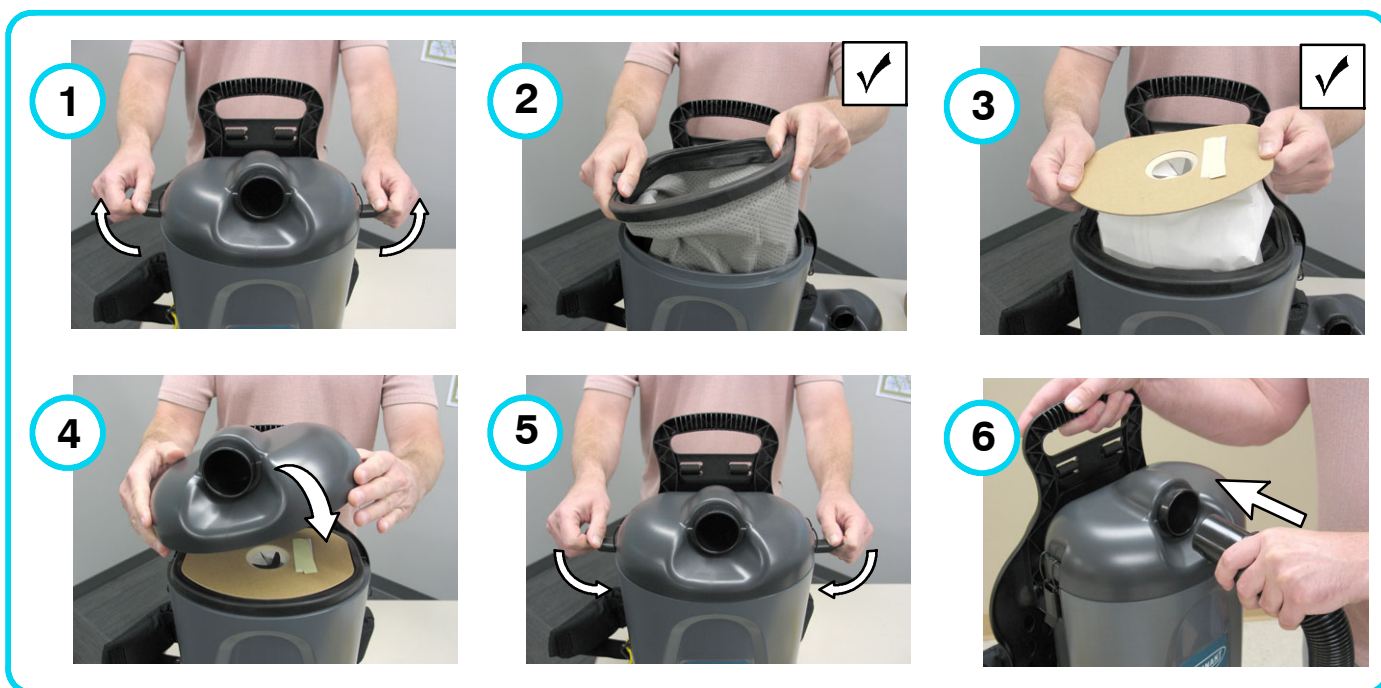
规格和部件如有变更，恕不另行通知。

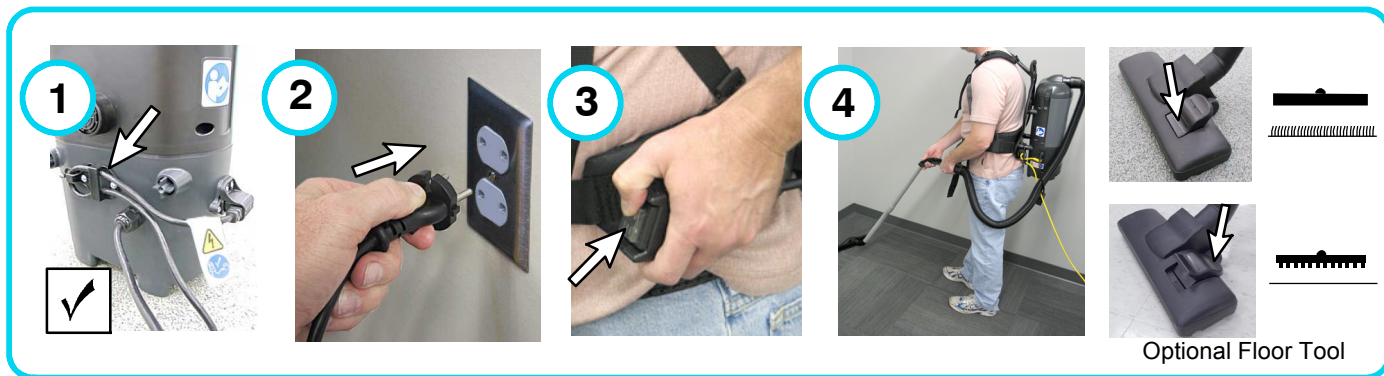
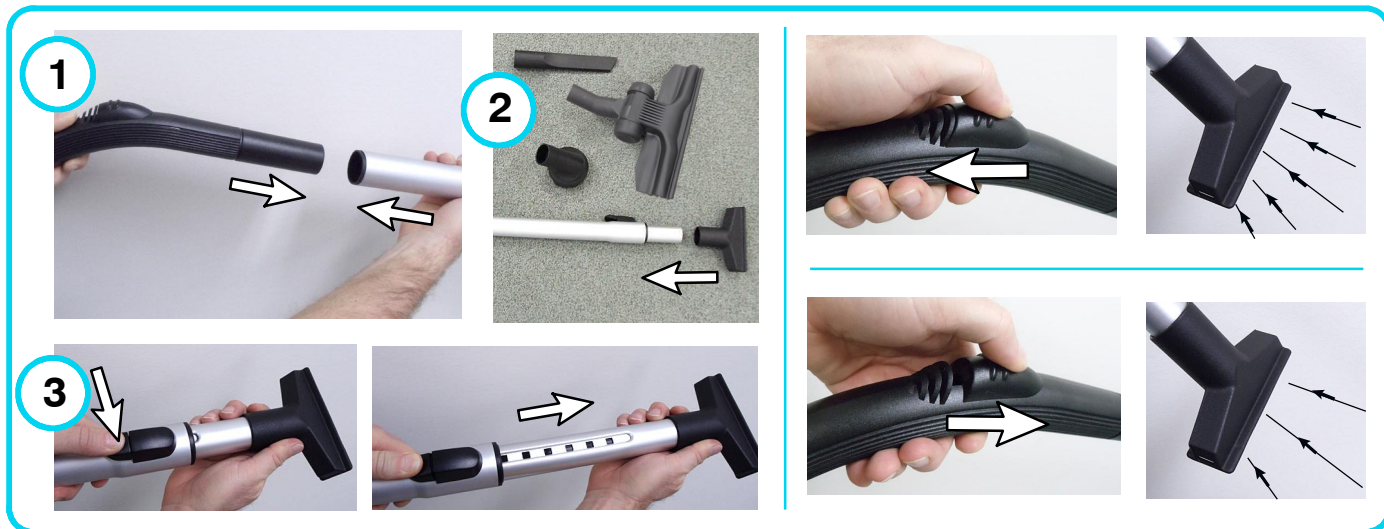
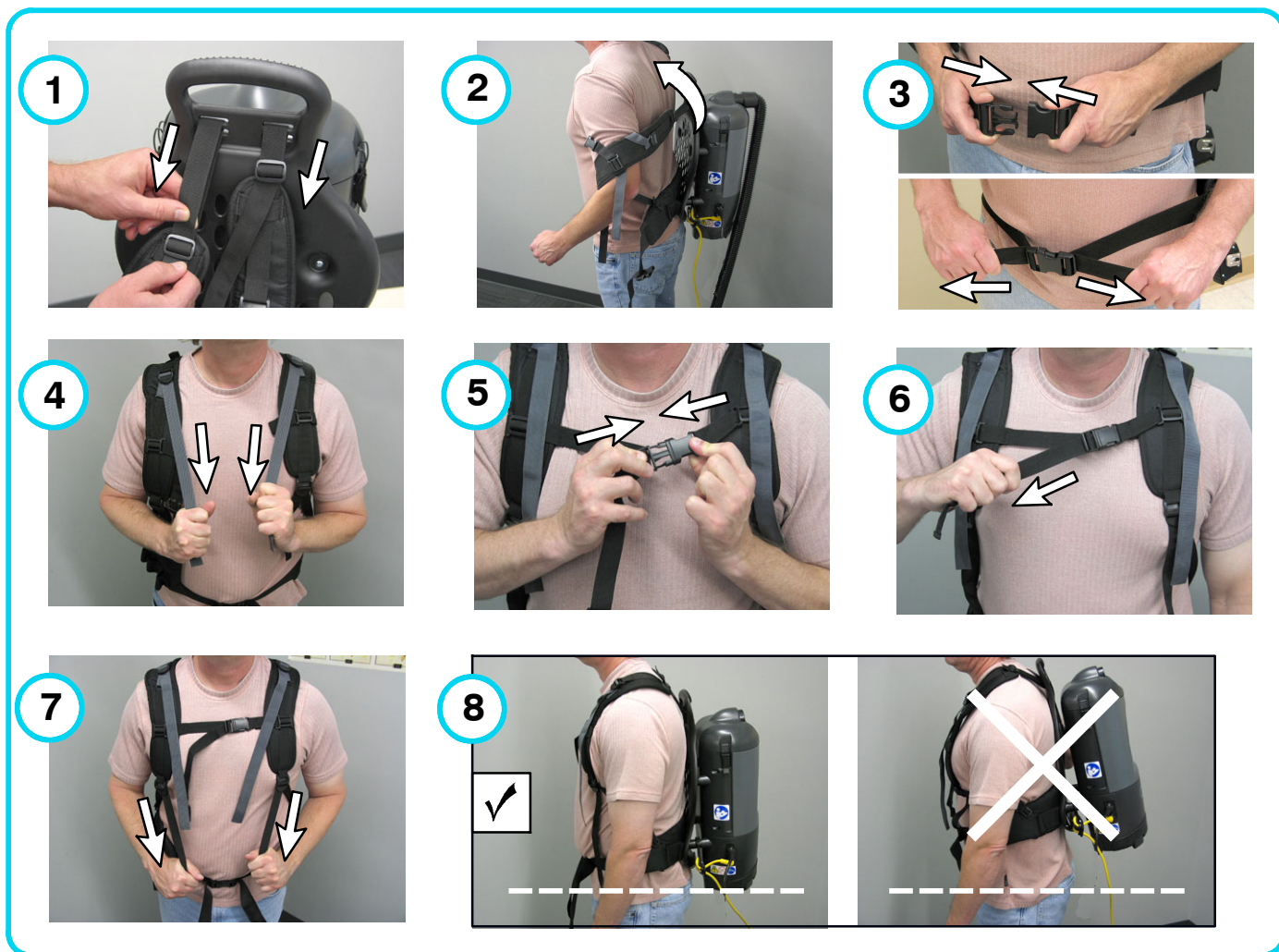
原说明的翻译。Copyright ©2015-2019 Tennant Company, 版权所有。中国印刷。



本标识内数字标示在正常使用状态下的环保使用期限为10年。

执行标准
 GB4706.1-2005 GB4706.7-2014
 GB4343.1-2009 GB17625.1-2012



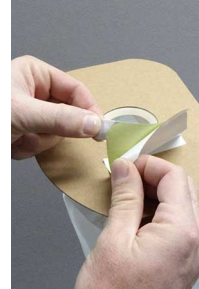




1



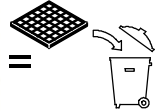
2



3



2010		
1	2	3
4	5	6
7	8	9
10	11	12
13	14	15
16	17	18
19	20	21
22	23	24
25	26	27
28	29	30
31	32	33
34	35	36
37	38	39
40	41	42
43	44	45
46	47	48
49	50	51
52	53	54
55	56	57
58	59	60
61	62	63
64	65	66
67	68	69
70	71	72
73	74	75
76	77	78
79	80	81
82	83	84
85	86	87
88	89	90
91	92	93
94	95	96
97	98	99
100	101	102



4



5





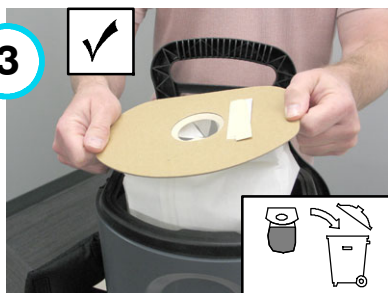
1



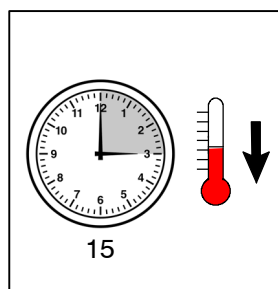
2



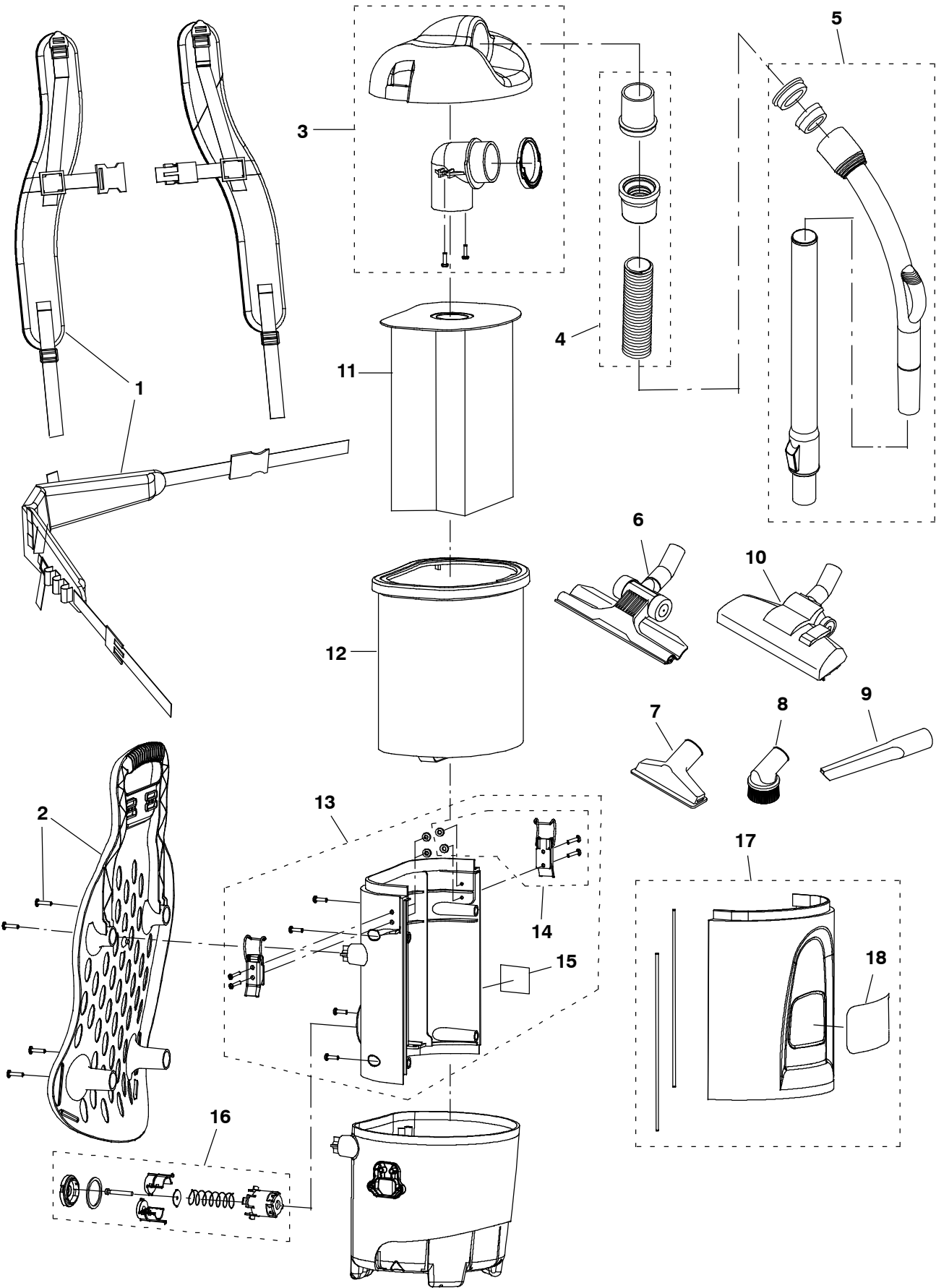
3



4



UPPER HOUSING GROUP



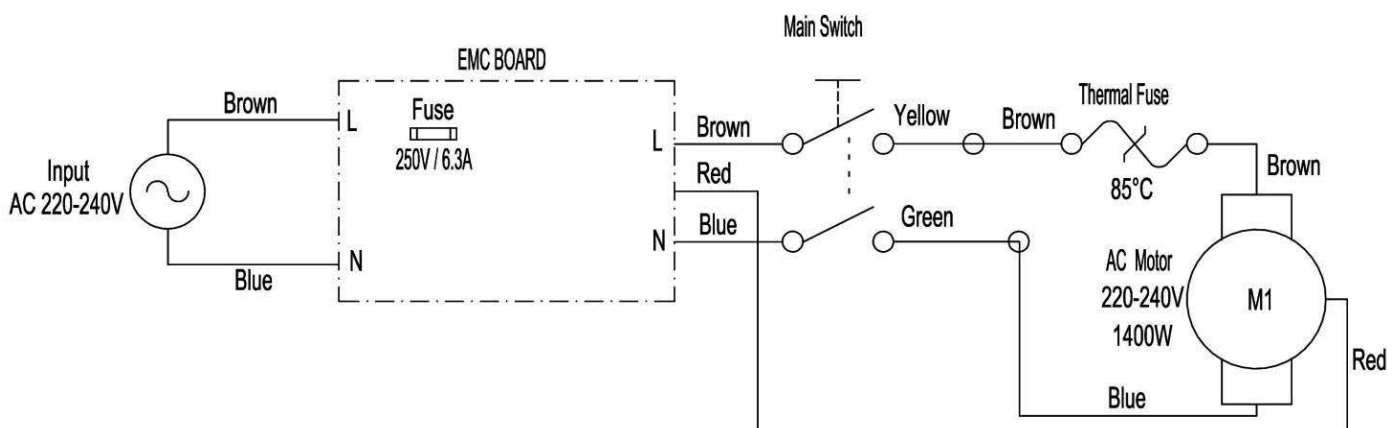
UPPER HOUSING GROUP

Ref.	Part No.	Description	Qty.	
1	9007790	HARNESS, BACKPACK	1	
2	9007787	BACKREST, HARNESS (Includes 4- #10x0.75 screws)	1	
3	9007783	COVER, HOUSING (Includes 2- 38x0.625 screws)	1	
4	9008775	HOSE, VACUUM (220- 240V Model)	1	
5	9008776	WAND, TELESCOPIC, W/HANDLE, 1.25	1	
6	9013472	TOOL, PICKUP, FLOOR, GULPER, 1.25D, 11W (Standard Tool)	1	
7	9008979	TOOL, UPHOLSTERY, 1.25D	1	
8	9008977	TOOL, BRUSH, DUST, 1.25D	1	
9	9008978	TOOL, CREVICE, 1.25D	1	
10	9013362	TOOL, PICKUP, FLOOR, ADJ, 1.25D, 10.5W (Optional Tool)	1	
11	9007784	BAG, VACUUM, 6 QT (Pack of 12)	1	
11	9007866	BAG, VACUUM, 6 QT (Case of 16 Packs=192)	1	
11	9009520	BAG, CLOTH, REUSEABLE, 6 QT [CN] OPTION	1	
12	9011416	BAG, FILTER, CLOTH, 6 QT	1	
▽	13	9009983	COVER, REAR, VALVE, RELIEF [CN]	1
▲	14	9007788	LATCH, BACKPACK (includes 2- rivets)	1
▲	15	1071204	LABEL, WARNING [CN]	1
	16	9011170	VALVE, RELIEF, SUCTION	1
▽	17	9013513	COVER, FRONT. W/LABEL, TEAL [V- BP- 7]	1
▲	18	1215382	LABEL, LOGO, TENNANT	1

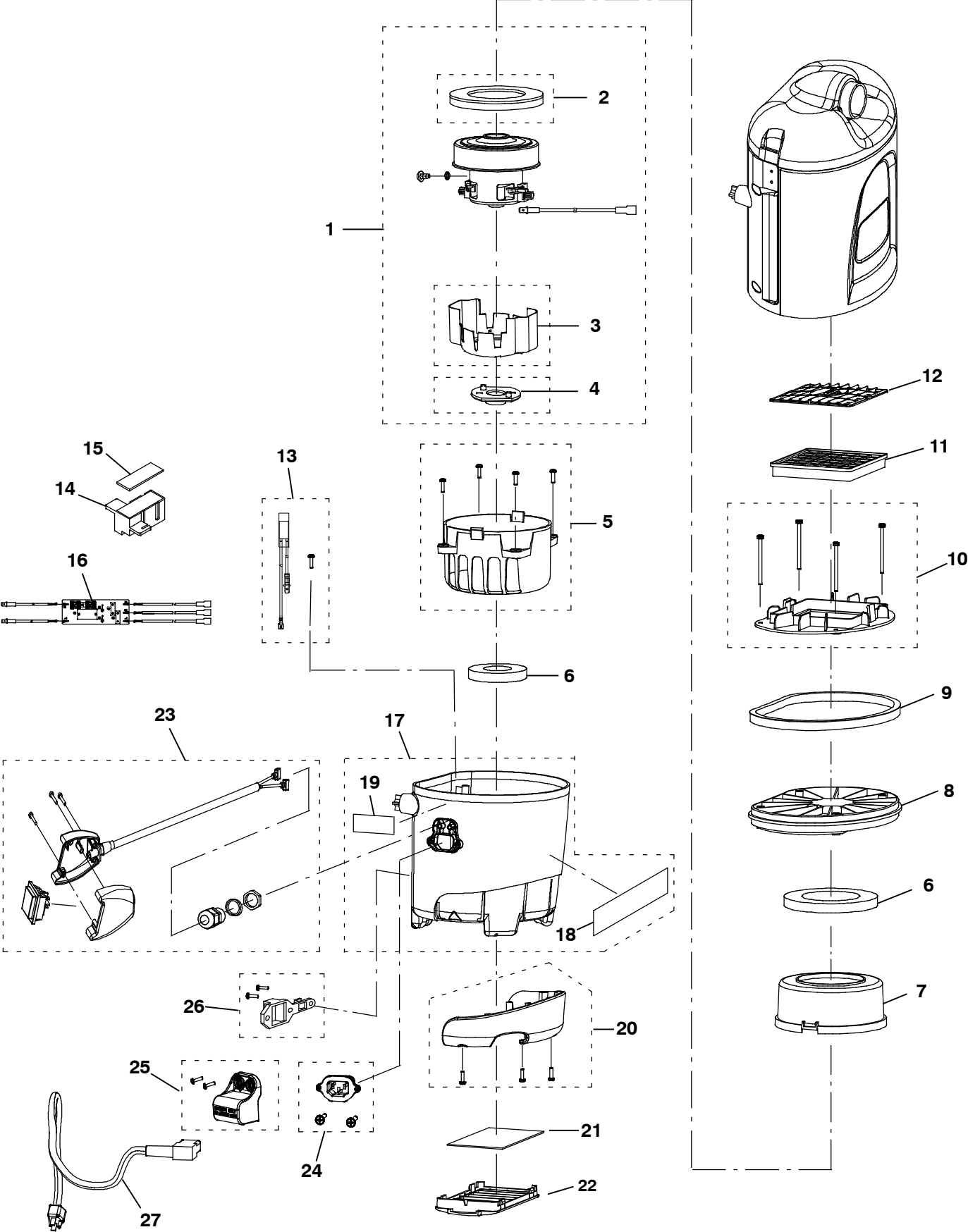
▽ ASSEMBLY

▲ INCLUDED IN ASSEMBLY

ELECTRICAL DIAGRAM



LOWER HOUSING GROUP



LOWER HOUSING GROUP

	Ref.	Part No.	Description	Qty.
▽	1	9014097	FAN, ASSY, VACUUM, BACKPACK, 220V, 1300W (includes 1- m4x6 set screw)	1
▲	2	9007807	GASKET, MOTOR	1
▲	3	9007803	SHROUD, MOTOR, BOTTOM	1
▲	4	9007804	MOUNT, MOTOR, BOTTOM	1
	5	9007805	SHROUD, MOTOR, BOTTOM (Includes 4- #8x0.625 screws)	1
	6	9007806	GASKET, MOTOR, KIT	1
	7	9007808	SHROUD, MOTOR, TOP	1
	8	9007809	COVER, MOTOR	1
	9	9007810	SEAL, COVER	1
	10	9007811	PLATE, FILTER	1
	11	9007812	FILTER, HEPA	1
	12	9007813	FRAME, FILTER, CAP	1
	13	9008783	SWITCH, THERMAL [CN] (Includes 1- #6x0.375 screws)	1
	14	9008772	BOX, CIRCUITBOARD, 220V	1
	15	9008773	COVER, BOX, CIRCUITBOARD, 220V	1
	16	9015245	CIRCUITBOARD, LOGIC, 220V	1
▽	17	9013517	BASE, VACUUM, BACKPACK	1
▲	18	9008185	LABEL, TRUE- HEPA	1
▲	19	993852	LABEL, ELECTRICAL HAZARD	1
	20	9007799	BUMPER (Includes 3- #8x0.625 screws)	1
	21	9007800	FILTER, EXHAUST (Pack of 6)	1
	22	9007801	FRAME, FILTER, BOTTOM	1
	23	9014128	SWITCH, W/ HARNESS, 220- 240V	1
	24	9013518	RECEPTACLE, CORD	1
	25	9013519	BRACKET, RETAINER, CORD	1
	26	9013555	CLIP, CORD, STRAIN RELIEF [V- BP- 7] (Includes hardware)	1
	27	9013524	CORD, POWER, 15M, ORG, 220- 240V [CN]	1

▽ ASSEMBLY

▲ INCLUDED IN ASSEMBLY

RECOMMENDED SPARE PARTS LIST

Part No.	Description
9007784	BAG, VACUUM, 6 QT (Pack of 12)
9007866	BAG, VACUUM, 6 QT (Case of 16 Packs=192)
9011416	BAG, CLOTH, 6 QT
9007812	FILTER, HEPA
9007800	FILTER, EXHAUST (Pack of 6)
9014128	SWITCH, W/ HARNESS, 220- 240V
9014097	FAN, ASSY, VACUUM, BACKPACK, 220- 240V
9013524	CORD, POWER, 15M, ORG, 220V [CN]
9013519	BRACKET, RETAINER, CORD
9013555	CLIP, CORD, STRAINRELIEF [V- BP- 7]
9013472	TOOL, PICKUP, FLOOR, GULPER, 1.25D, 11W (Standard Tool)
9008979	TOOL, UPHOLSTERY, 1.25D
9008977	TOOL, BRUSH, DUST, 1.25D
9008978	TOOL, CREVICE, 1.25D
9008775	HOSE, VACUUM (220- 240V Model)
9008776	WAND, TELESCOPIC, W/HANDLE, 1.25D
9013362	TOOL, PICKUP, FLOOR, ADJ, 1.25D, 10.5W (Optional Tool)

