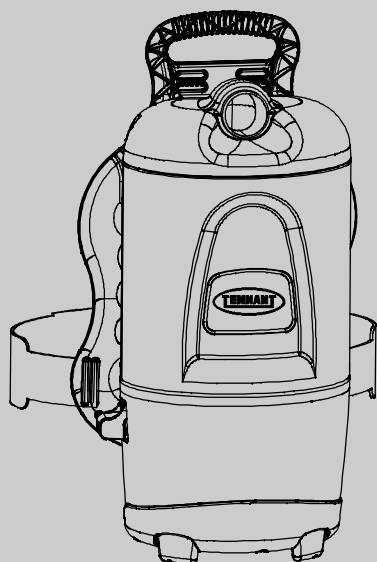




V-BP-7

Commercial Backpack Vacuum Cleaner

Operator and Parts Manual **EN**



IMPORTANT - Read these instructions carefully and retain for future use.

Model Part No.:
1215371 - 220-240V AU



For latest manuals and other
language Operator manuals, visit:
www.tennantco.com/manuals

www.tennantco.com

9013462
Rev. 01 (12-2018)

OPERATION

This manual is furnished with each new model. It provides necessary operation and maintenance instructions and replacement parts information.



Read all instructions before using machine.

Intended Use

This backpack dry vacuum cleaner is intended for commercial use, for example in hotels, schools, hospitals, factories, shops, offices and rental businesses. It is designed exclusively to pick up dry dirt, debris and dust in an indoor environment and is not constructed for any other use. The pick up of any type of fluid or hazardous materials is prohibited. Only use accessories intended for machine.

This machine will provide excellent service. However, the best results will be obtained at minimum costs if:

- The machine is operated with reasonable care.
- The machine is maintained regularly - per the machine maintenance instructions provided.
- The machine is maintained with manufacturer supplied or equivalent parts.

To view, print or download manuals online, visit www.tennantco.com/manuals

Protect the Environment



Please dispose of packaging materials, old machine components in an environmentally safe way according to local waste disposal regulations.



Always remember to recycle.

Machine Data

Please fill out at time of installation for future reference.

Model No. - _____

Serial No. - _____

Installation Date - _____

Technical Specifications

Model	V-BP-7
Voltage	220-240 V
Frequency	50/60 Hz
Rated Power	1200 W / 5.2 A
Airflow	3.0 m ³ /min
Bag capacity	5.7 L
Size (Height x Width)	53 cm x 24 cm
Weight	5 kg
Cable Length	15 m
Filtration - HEPA	99.97% @0.3 micron
Sound Pressure Level L _{pA}	<70 dBA
Sound Uncertainty K _{pA}	0.8 dBA
Sound Power Level L _{WA} + uncertainty K _{WA}	79.6 dBA
Vibrations at Controls	≤2.5 m/s ²
Protection Grade	IP20

TENNANT COMPANY

PO BOX 1452
Minneapolis, MN 55440 USA
Phone: (800) 553- 8033
www.tennantco.com

Specifications and parts are subject to change without notice.
Original Instructions. Copyright ©2015-2018 Tennant Company, Printed in China
All rights reserved.

IMPORTANT SAFETY INSTRUCTIONS



This symbol warns the operator of hazards and unsafe practices which could result in severe personal injury or death.



WARNING - To reduce the risk of fire, explosion, electric shock, or injury:

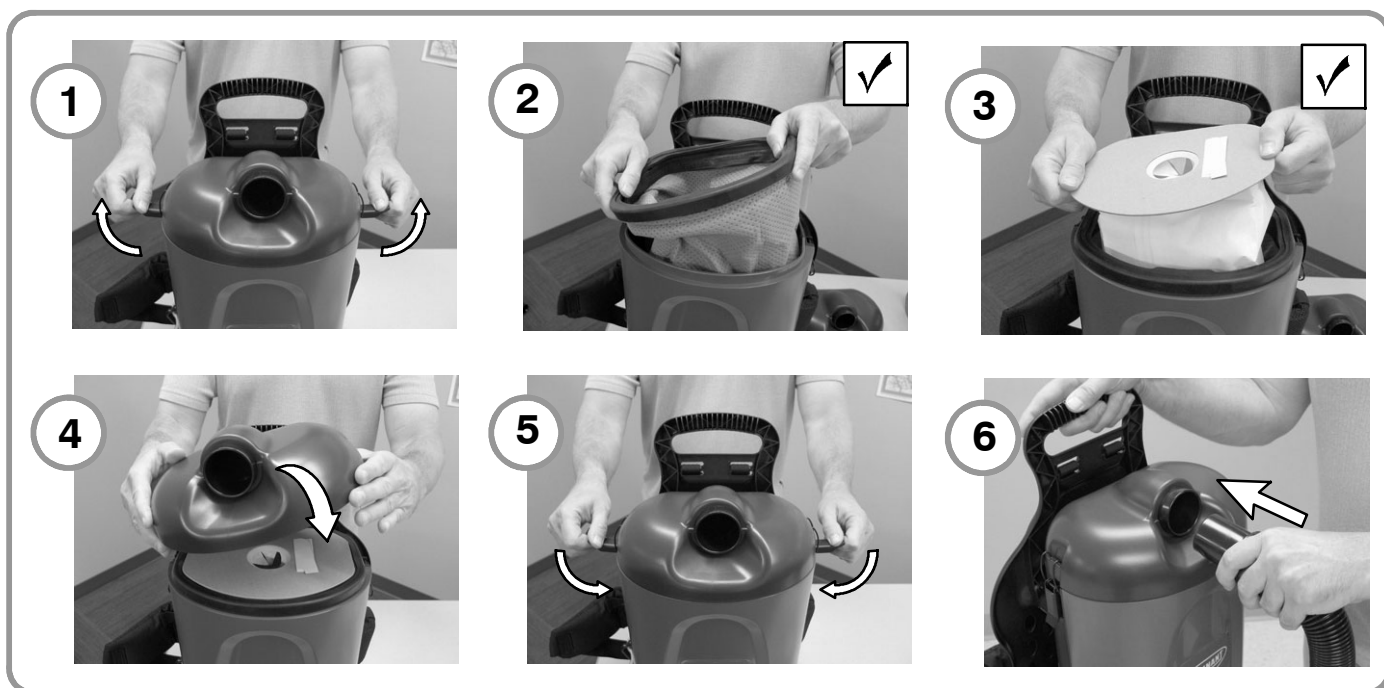
1. Do not use unless trained and authorized.
2. Do not use machine with flammable liquids.
3. Do not use machine in the presence of flammable or combustible liquids/fumes/dusts.
4. Do not pick up any type of fluid, hazardous dust or toxic materials.
5. Do not use outdoors or on wet surfaces.
6. Unplug the vacuum cleaner immediately from mains supply if it is not working properly, if it has been dropped or damaged, if the vacuum cleaner came in contact with flammable liquids, combustible liquids/fumes/dusts, if you pick up any type of fluid, hazardous dust or toxic materials. Return the appliance to the nearest authorized dealer or service center for examination, repair, electrical or mechanical adjustment.
7. Do not leave machine unattended when plugged in.
8. Do not handle plug or machine with wet hands.
9. **Electrical Hazard**



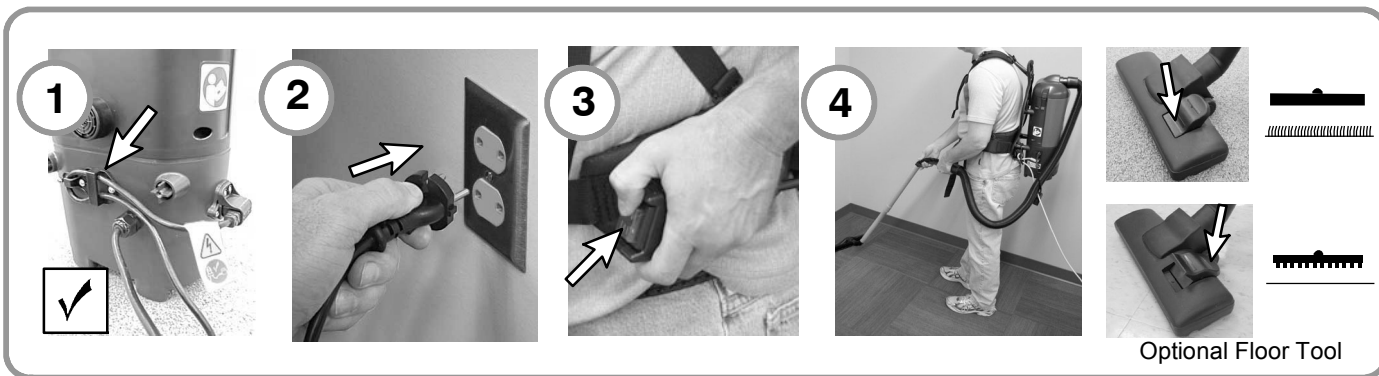
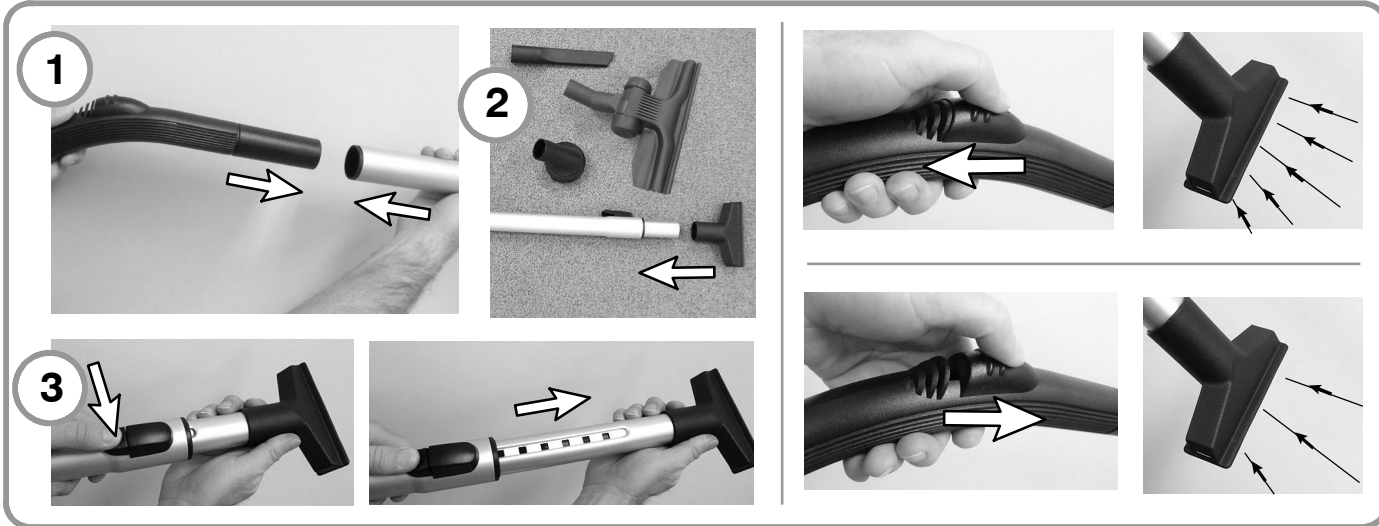
Unplug from socket outlet before assembly, adjustment, changing accessories, user maintenance, cleaning and when not in use. Do not use with damaged cord or plug. If the cord is damaged, it must be replaced by the manufacturer, its service agent or a similarly qualified person in order to avoid a hazard.

10. Do not pick up anything that is burning or smoking.
11. Use only as described in this manual.
12. Do not close a door on cord, or pull cord around sharp edges or corners. Do not run appliance over cord. Keep cord away from heated surfaces.
13. Do not unplug by pulling on cord.
14. Keep hair, loose clothing, fingers, and all parts of body away from openings and moving parts.
15. Do not put any object into openings. Do not use with any opening blocked.
16. Do not allow to be used as a toy.
17. Use extra care when cleaning on stairs.
18. Do not use without dust bag and/or filters in place.
19. Do not use additional extension cords.
20. Do not modify machine from its original design.
21. Turn off all controls before unplugging.
22. This machine is not intended for use by persons (including children) with reduced physical, sensory or mental capabilities, or lack of experience and knowledge, unless they have been given supervision or instruction concerning use of the machine by a person responsible for their safety.
23. Children should be supervised to ensure that they do not play with machine.
24. After use ensure the machine is unplugged from the mains supply and wipe surface with a damp cloth.
25. Store the vacuum indoors at a dry location. Do not store it in an elevated location, for example a rack.

SAVE THESE INSTRUCTIONS

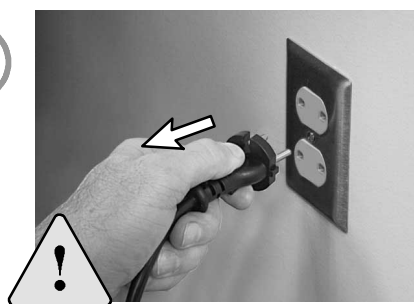


OPERATION

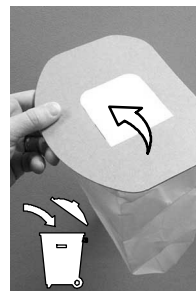
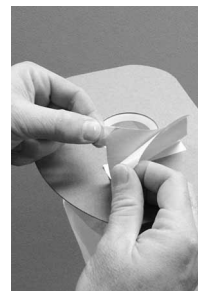




1



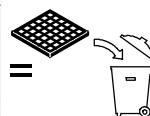
2



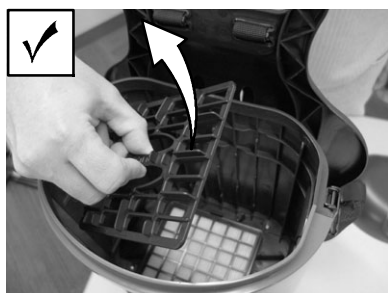
3



2010		
Jan	Feb	Mar
Apr	May	Jun
Jul	Aug	Sep
Oct	Nov	Dec
1	2	3
4	5	6
7	8	9
10	11	12
13	14	15
16	17	18
19	20	21
22	23	24
25	26	27
28	29	30
31	32	33



4



5



OPERATION



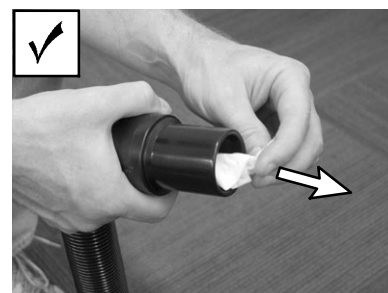
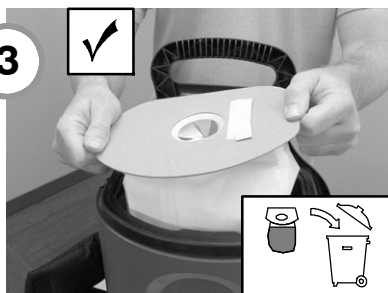
1



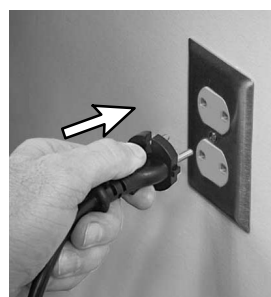
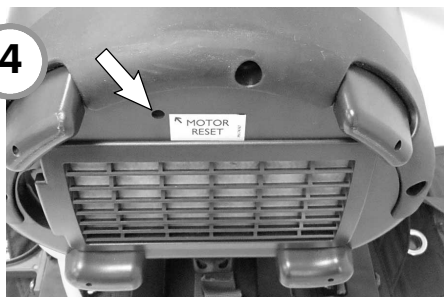
2



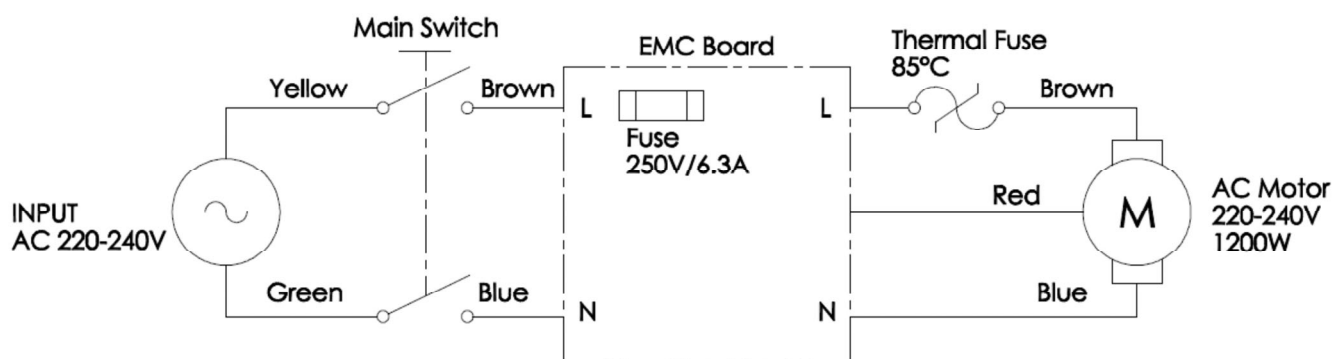
3



4



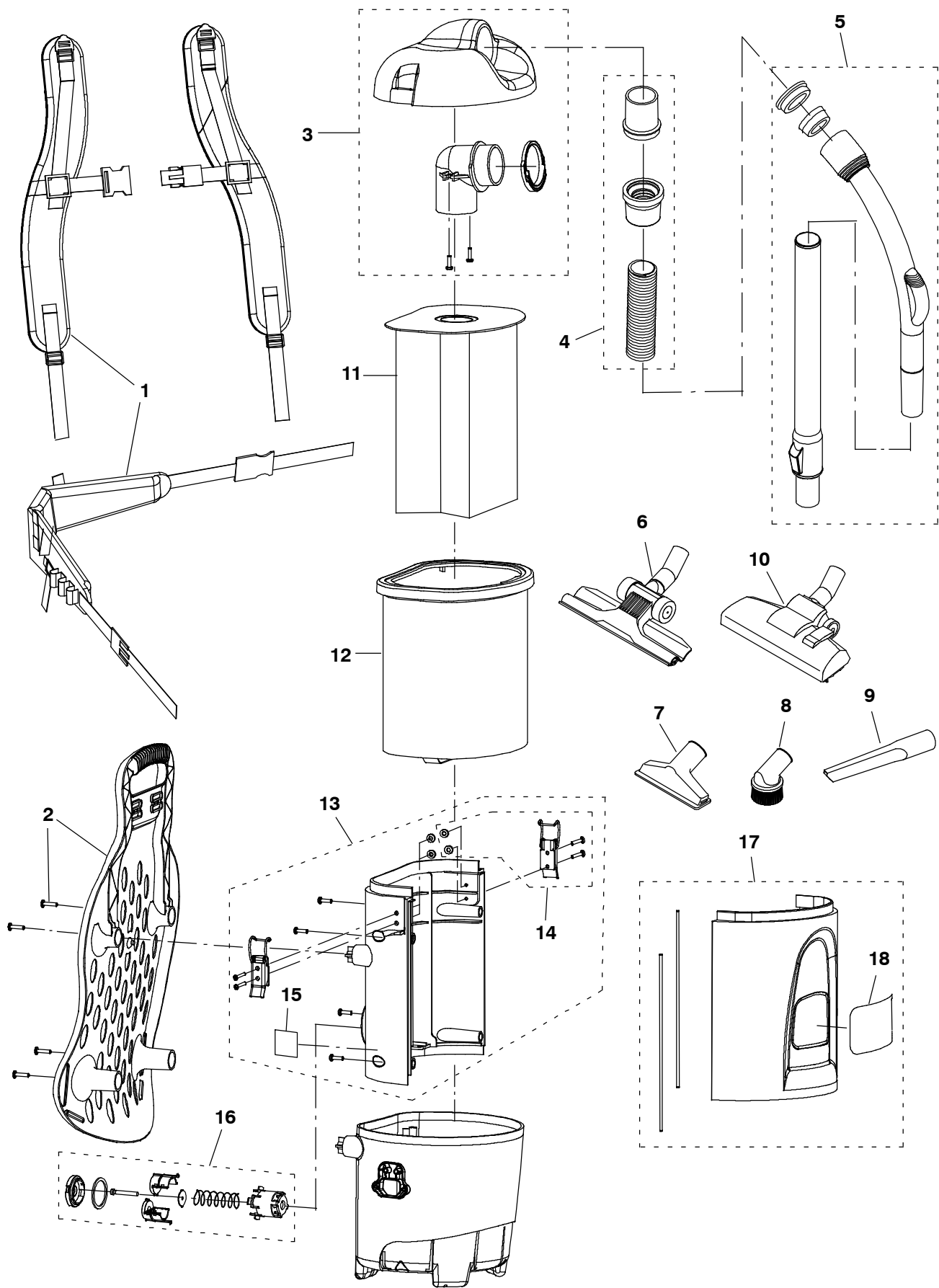
ELECTRICAL DIAGRAM



RECOMMENDED SPARE PARTS LIST

Part No.	Description
9007784	BAG, VACUUM, 6 QT (Pack of 12)
9007866	BAG, VACUUM, 6 QT (Case of 16 Packs=192)
9011416	BAG, CLOTH, 6 QT
9007812	FILTER, HEPA
9007800	FILTER, EXHAUST (Pack of 6)
9014128	SWITCH, W/ HARNESS, 220- 240V
9013732	FAN, ASSY, VACUUM, BACKPACK, 220- 240V
9013523	CORD, POWER, 15M, ORG, 220- 240V [AU]
9013519	BRACKET, RETAINER, CORD
9013555	CLIP, CORD, STRAINRELIEF [V- BP- 7]
9013472	TOOL, PICKUP, FLOOR, GULPER, 1.25D, 11W (Standard Tool)
9008979	TOOL, UPHOLSTERY, 1.25D
9008977	TOOL, BRUSH, DUST, 1.25D
9008978	TOOL, CREVICE, 1.25D
9008775	HOSE, VACUUM (220- 240V model)
9008776	WAND, TELESCOPIC, W/HANDLE, 1.25D
9013362	TOOL, PICKUP, FLOOR, ADJ, 1.25D, 10.5W (Optional Tool)

UPPER HOUSING GROUP



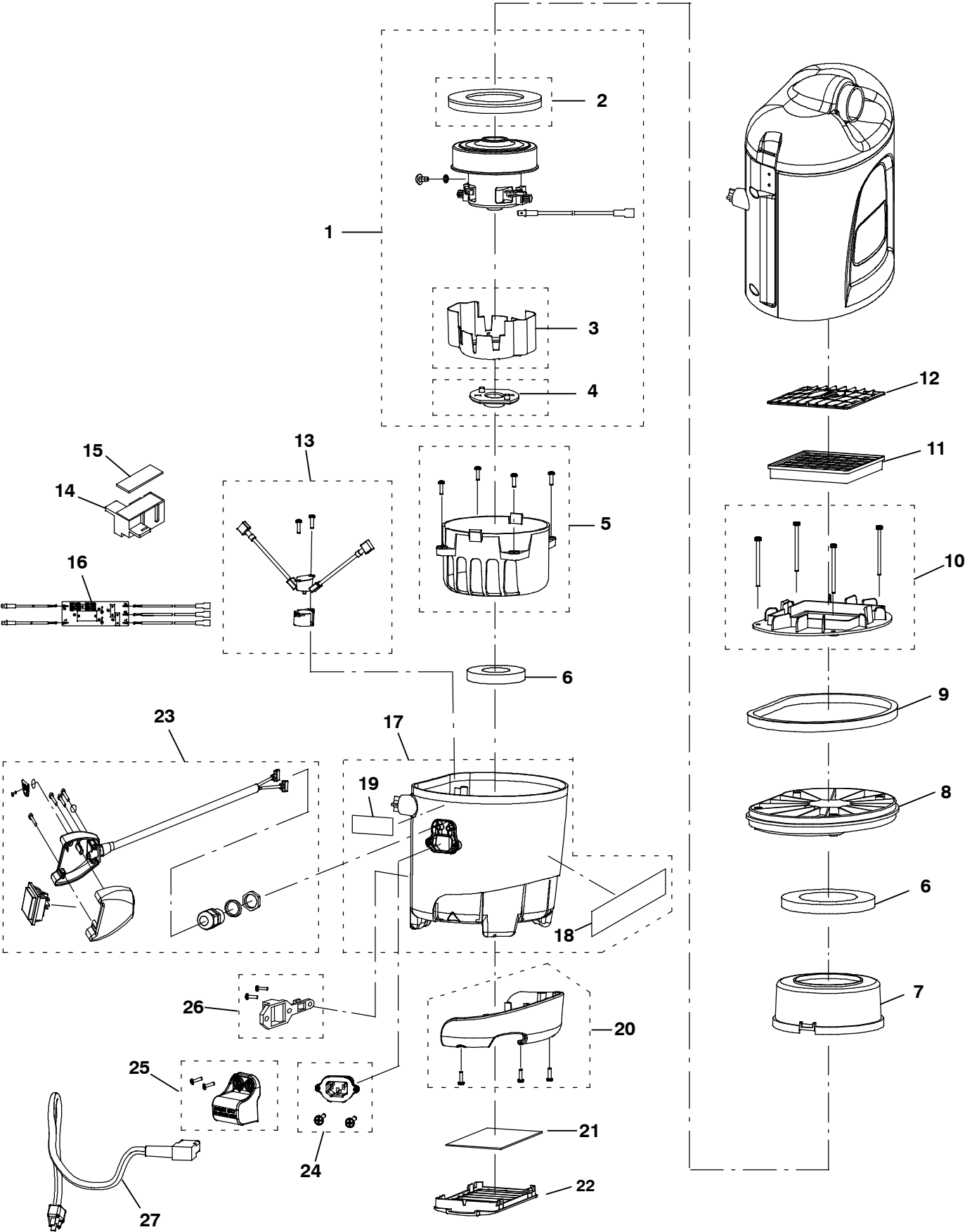
UPPER HOUSING GROUP

Ref.	Part No.	Description	Qty.
1	9007790	HARNESS, BACKPACK	1
2	9007787	BACKREST, HARNESS (Includes 4- #10x0.75 screws)	1
3	9007783	COVER, HOUSING (Includes 2- 38x0.625 screws)	1
4	9008775	HOSE, VACUUM (220- 240V model)	1
5	9008776	WAND, TELESCOPIC, W/HANDLE, 1.25	1
6	9013472	TOOL, PICKUP, FLOOR, GULPER, 1.25D, 11W (Standard Tool)	1
7	9008979	TOOL, UPHOLSTERY, 1.25D	1
8	9008977	TOOL, BRUSH, DUST, 1.25D	1
9	9008978	TOOL, CREVICE, 1.25D	1
10	9013362	TOOL, PICKUP, FLOOR, ADJ, 1.25D, 10.5W (Optional Tool)	1
11	9007784	BAG, VACUUM, 6 QT (Pack of 12)	1
11	9007866	BAG, VACUUM, 6 QT (Case of 16 Packs=192)	1
12	9011416	BAG, CLOTH, 6 QT	1
▽	13	9011169 COVER, REAR, VALVE, RELIEF [AUS]	1
▲	14	9007788 LATCH, BACKPACK (includes 2- rivets)	1
▲	15	1028077 LABEL, READ MANUAL	1
16	9011170	VALVE, RELIEF, SUCTION	1
▽	17	9013513 COVER, FRONT. W/LABEL, TEAL [V- BP- 7]	1
▲	18	1215382 LABEL, LOGO, TENNANT	1

▽ ASSEMBLY

▲ INCLUDED IN ASSEMBLY

LOWER HOUSING GROUP



LOWER HOUSING GROUP

	Ref.	Part No.	Description	Qty.
▽	1	9013732	FAN, ASSY, VACUUM, BACKPACK, 220- 240V (includes 1- m4x6 set screw)	1
▲	2	9007807	GASKET, MOTOR	1
▲	3	9007803	SHROUD, MOTOR, BOTTOM	1
▲	4	9007804	MOUNT, MOTOR, BOTTOM	1
	5	9007805	SHROUD, MOTOR, BOTTOM (Includes 4- #8x0.625 screws)	1
	6	9007806	GASKET, MOTOR, KIT	1
	7	9007808	SHROUD, MOTOR, TOP	1
	8	9007809	COVER, MOTOR	1
	9	9007810	SEAL, COVER	1
	10	9007811	PLATE, FILTER	1
	11	9007812	FILTER, HEPA	1
	12	9007813	FRAME, FILTER, CAP	1
	13	9012551	SWITCH, THERMAL [AUS] (Includes 2- #6x0.375 screws)	1
	14	9008772	BOX, CIRCUITBOARD, 230V	1
	15	9008773	COVER, BOX, CIRCUITBOARD, 230V	1
	16	9008782	CIRCUITBOARD, LOGIC, 230V	1
▽	17	9013517	BASE, VACUUM, BACKPACK	1
▲	18	9008185	LABEL, TRUE- HEPA	1
▲	19	993852	LABEL, ELECTRICAL HAZARD	1
	20	9007799	BUMPER (Includes 3- #8x0.625 screws)	1
	21	9007800	FILTER, EXHAUST (Pack of 6)	1
	22	9007801	FRAME, FILTER, BOTTOM	1
	23	9014128	SWITCH, W/ HARNESS, 220- 240V	1
	24	9013518	RECEPTACLE, CORD	1
	25	9013519	BRACKET, RETAINER, CORD	1
	26	9013555	CLIP, CORD, STRAIN RELIEF [V- BP- 7] (Includes hardware)	1
	27	9013523	CORD, POWER, 15M, ORG, 220- 240V [AU]	1

▽ ASSEMBLY

▲ INCLUDED IN ASSEMBLY