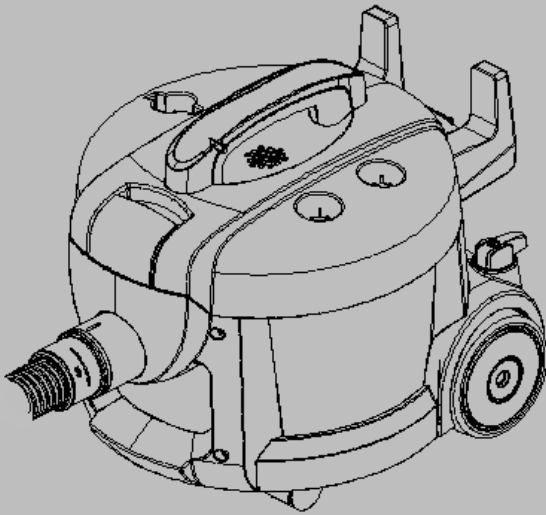




# V6

## Canister Dry Vacuum Cleaner

Operator and Parts Manual **EN**



Model Part No. :  
1070570 – V6 220-240V AU



**IMPORTANT** – Read these instructions  
Carefully and Retain for Future Use.



## Introduction

This manual is furnished with each new model. It provides necessary operation and maintenance instructions and replacement parts information.



**Read all instructions before using machine.**

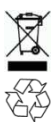
## Intended Use

This canister dry vacuum cleaner is intended for commercial use, for example in hotels, schools, hospitals, factories, shops, offices and rental businesses. The machine is suitable for picking up dry, non-flammable dust and debris in an indoor environment. It is not suitable for picking up liquids or hazardous materials.

## General Information

This machine will provide excellent service. However, the best results will be obtained at minimum costs if:

- The machine is operated with reasonable care.
- The machine is maintained regularly - per the machine maintenance instructions provided.
- The machine is maintained with manufacturer-supplied or equivalent parts.



## Protect the Environment

Please dispose of packaging materials and used machine components in an environmentally safe way according to local waste disposal regulations. Always remember to recycle.

## Machine Data

Please fill out at time of installation for future reference.

Model No. - \_\_\_\_\_

Serial No. - \_\_\_\_\_

Installation Date - \_\_\_\_\_

## Technical Specifications

Model	V6
Voltage	220-240V
Frequency	50-60Hz
Rated Power	1200W
Airflow Rate	40 l/s
Bag Capacity	9 L
Power Cord Length	12m
Filtration (HEPA)	99.95% @ 0.3 micron
Weight	7.6 kg
Size (Height x Width)	36 x 40cm
Sound Pressure Level $L_{pA}$	59.7 dBA @ 1.5m
Sound Uncertainty $K_{pA}$	1.645 dBA
Sound Power Level $L_{wA}$ + uncertainty $K_{wA}$	73 dBA
Constructions Class	II
Vibrations at Controls	<2.5 m/s <sup>2</sup>
Protection Grade	IP20

## TENNANT COMPANY

PO BOX 1452  
Minneapolis, MN 5540  
Phone: (800) 553-8033  
www.tennantco.com

Original Instructions. Copyright ©2014 Tennant Company.  
All rights reserved. Printed in China.  
Specifications and parts are subject to change without notice.

## IMPORTANT SAFETY INSTRUCTIONS



This symbol warns the operator of hazards and unsafe practices which could result in severe personal injury or death.



**WARNING - To reduce the risk of fire, electric shock, or injury:**

1. Do not leave appliance when plugged in.
2. Unplug cord from outlet when not in use and before servicing.
3. Do not use outdoors or on wet surfaces. This machine is for indoor and dry use only.
4. Do not allow to be used as a toy. Close attention is necessary when used by or near children.
5. Use only as described in this manual. Use only manufacturer's recommended attachments.
6. Operators shall be adequately instructed on the use of this machine.
7. This machine is not intended for use by persons (including children) with reduced physical, sensory or mental capabilities, or lack of experience and knowledge, unless they have been given supervision or instruction concerning use of the appliance by a person responsible for their safety.
8. Do not use with damaged cord or plug. Regularly inspect cord and plug for damage. If the cord is damaged, it must be replaced by the manufacturer, its service agent or a similarly qualified person in order to avoid a hazard.

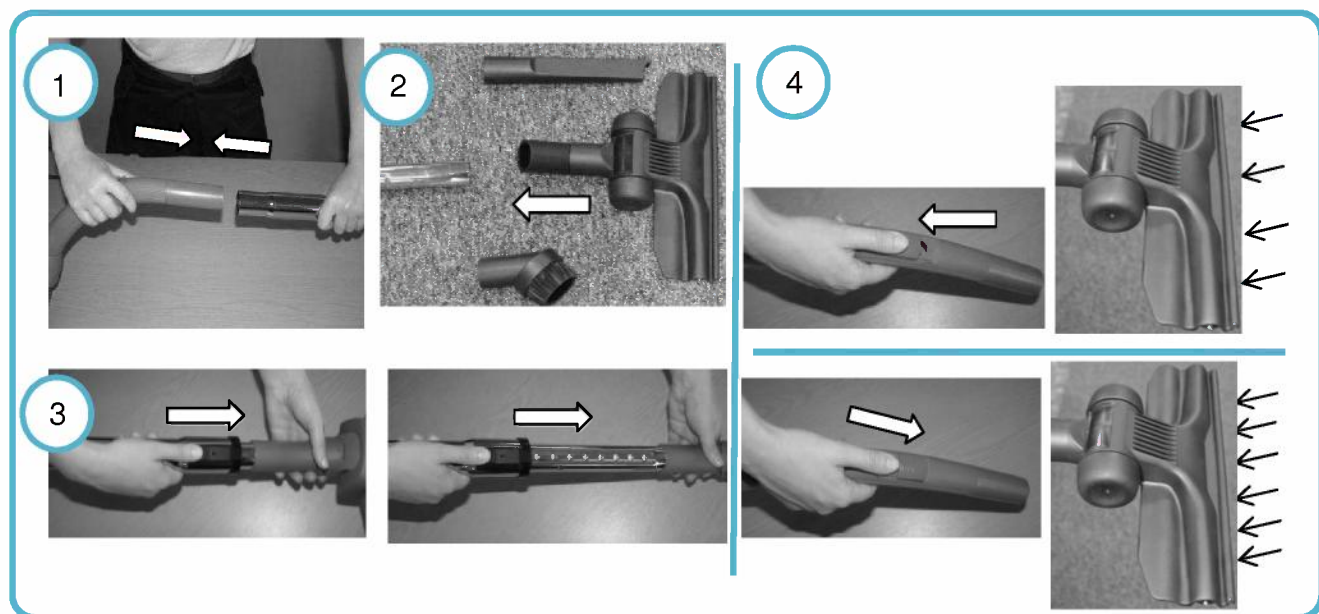
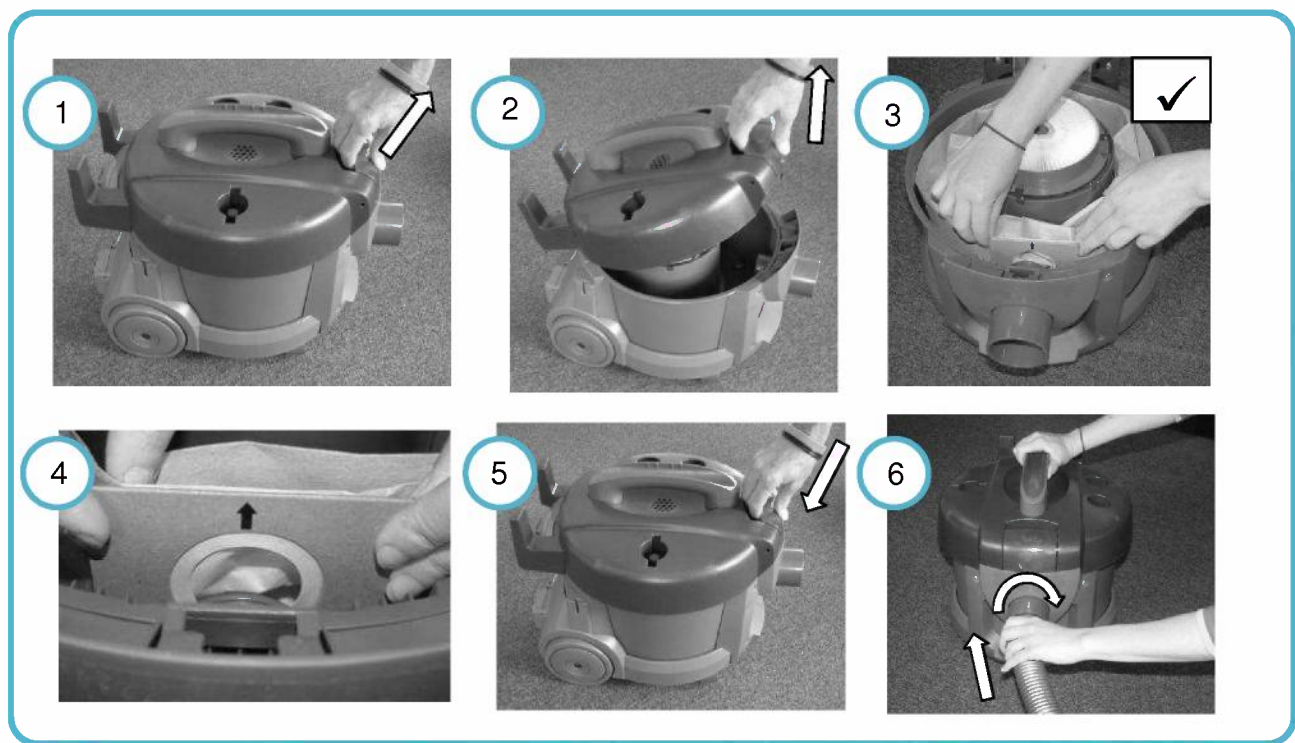


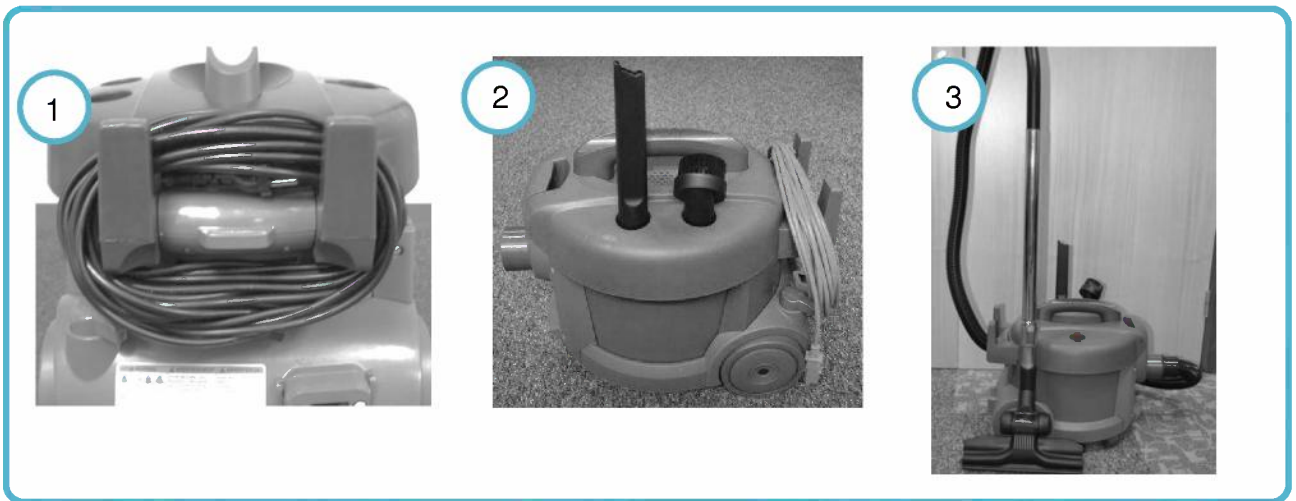
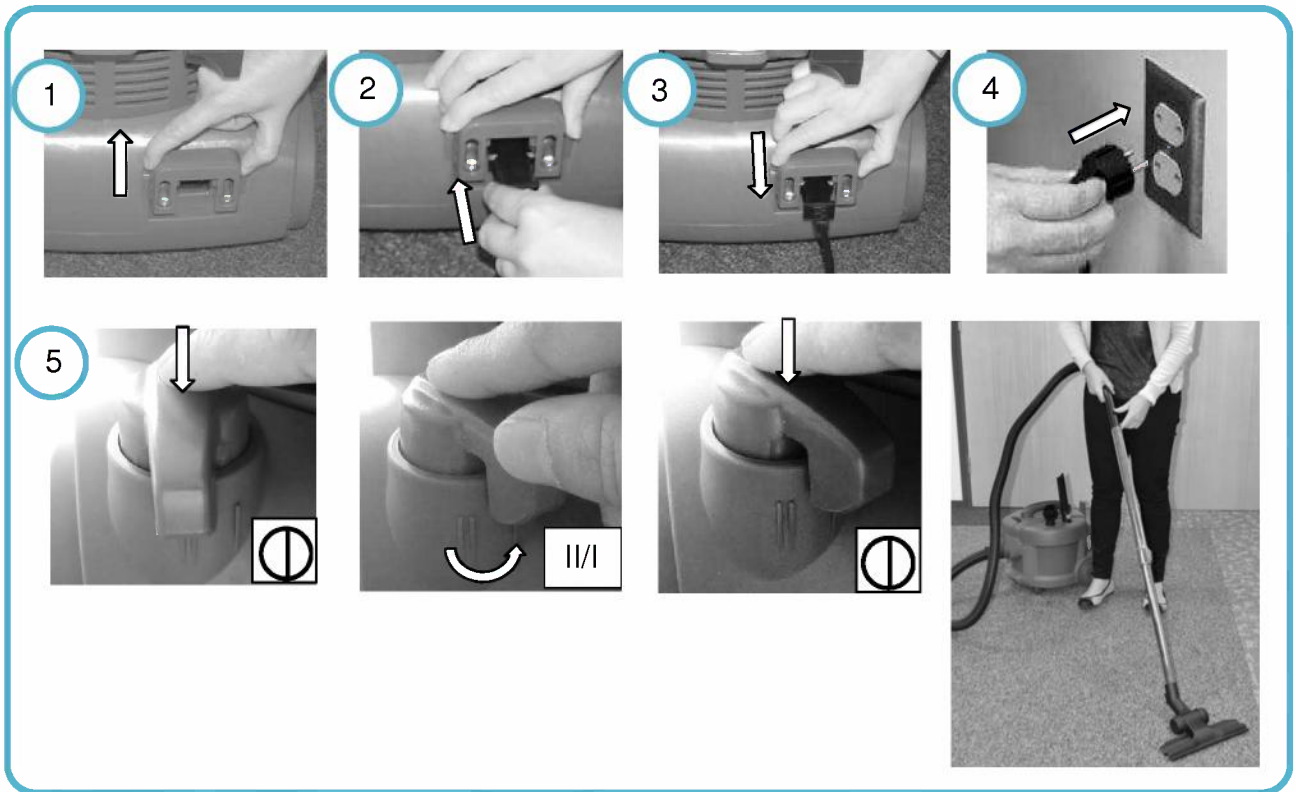
9. Do not pull or carry by cord, use cord as handle, close a door on cord, or pull cord around sharp edges or corners. Do not run appliance over cord. Keep cord away from heated surfaces.
10. Do not unplug by pulling on cord. To unplug, grasp the plug, not the cord.
11. Do not handle plug or appliance with wet hands.
12. Connect to a properly grounded outlet only.
13. Make sure the power voltage corresponds with the voltage shown on the machine's rating plate.
14. Do not put any object into openings. Do not use with any opening blocked; keep free of dust, lint, hair, and anything that may reduce air flow.
15. Keep hair, loose clothing, fingers, and all parts of body away from openings and moving parts.
16. Turn off all controls before unplugging.
17. Do not use to pick up flammable or combustible liquids, such as gasoline, or use in areas where they may be present.
18. Do not pick up any type of fluid, hazardous dust or toxic materials.
19. Do not pick up anything that is burning or smoking, such as cigarettes, matches, or hot ashes.
20. Use extra care when cleaning on stairs.
21. Do not use without dust bag and/or filters in place.
22. If using an extension cord make sure the cord rating is suitable for this machine.
23. Do not modify machine from its original design.
24. Keep children and unauthorized persons away from the machine when in use.
25. All repairs must be performed by a qualified service person. Use only manufacturer-supplied or equivalent replacement parts.
26. Do not expose to rain or moisture. Store indoors only.

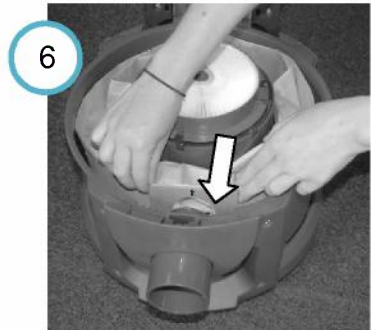
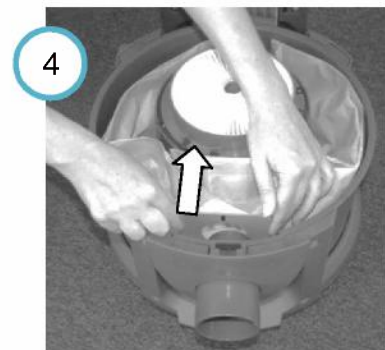
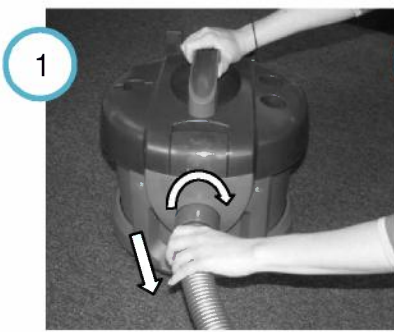
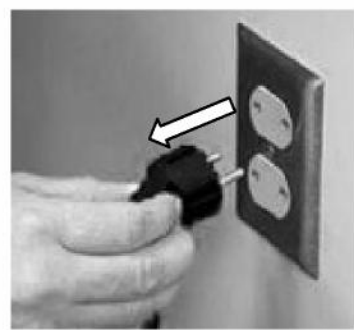
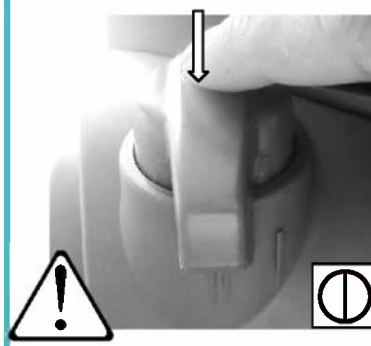
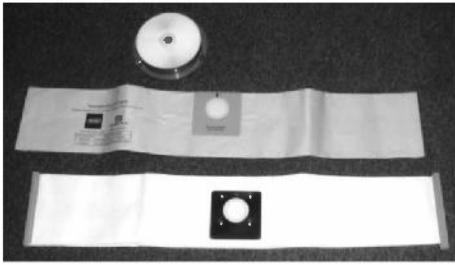
## Storage and Transporting

Carefully wrap power cord around the cord storage hooks and store machine in a dry indoor environment. Do not expose machine to rain or moisture. Lift machine by the carrying handle to transport.

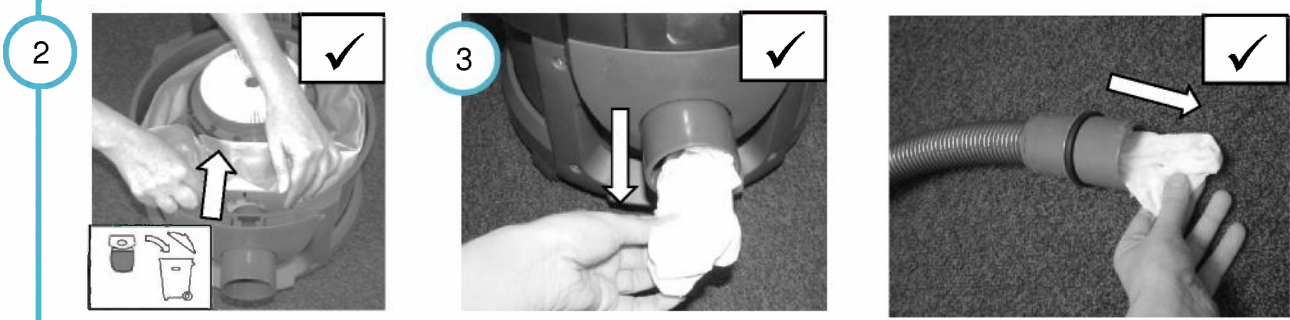
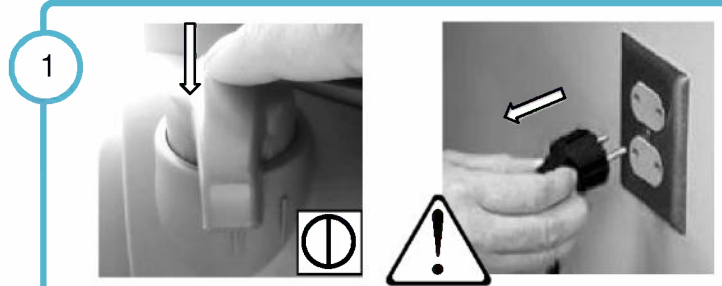
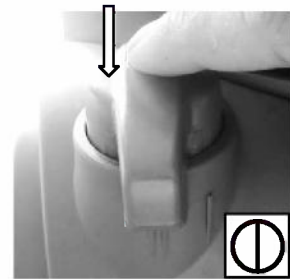
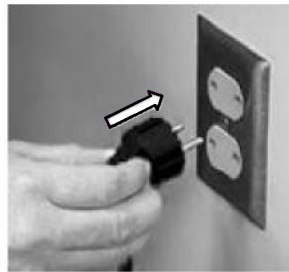
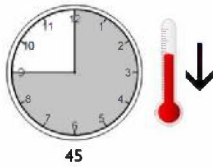
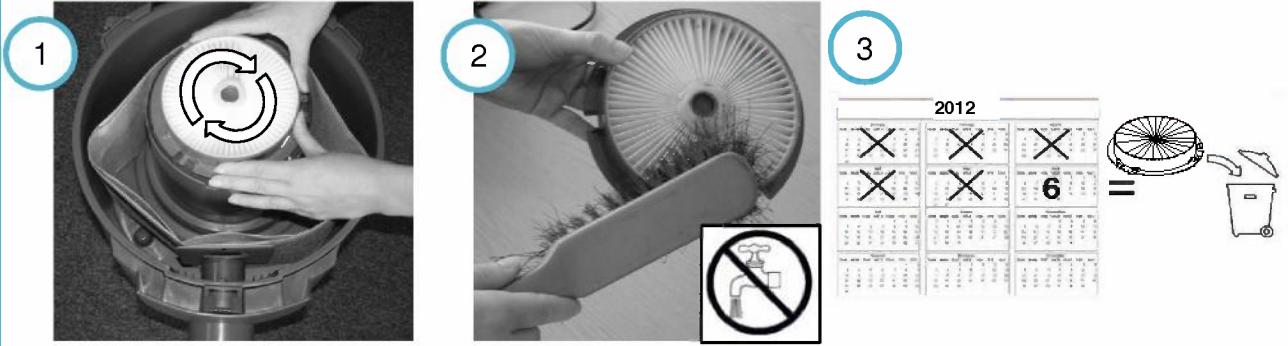




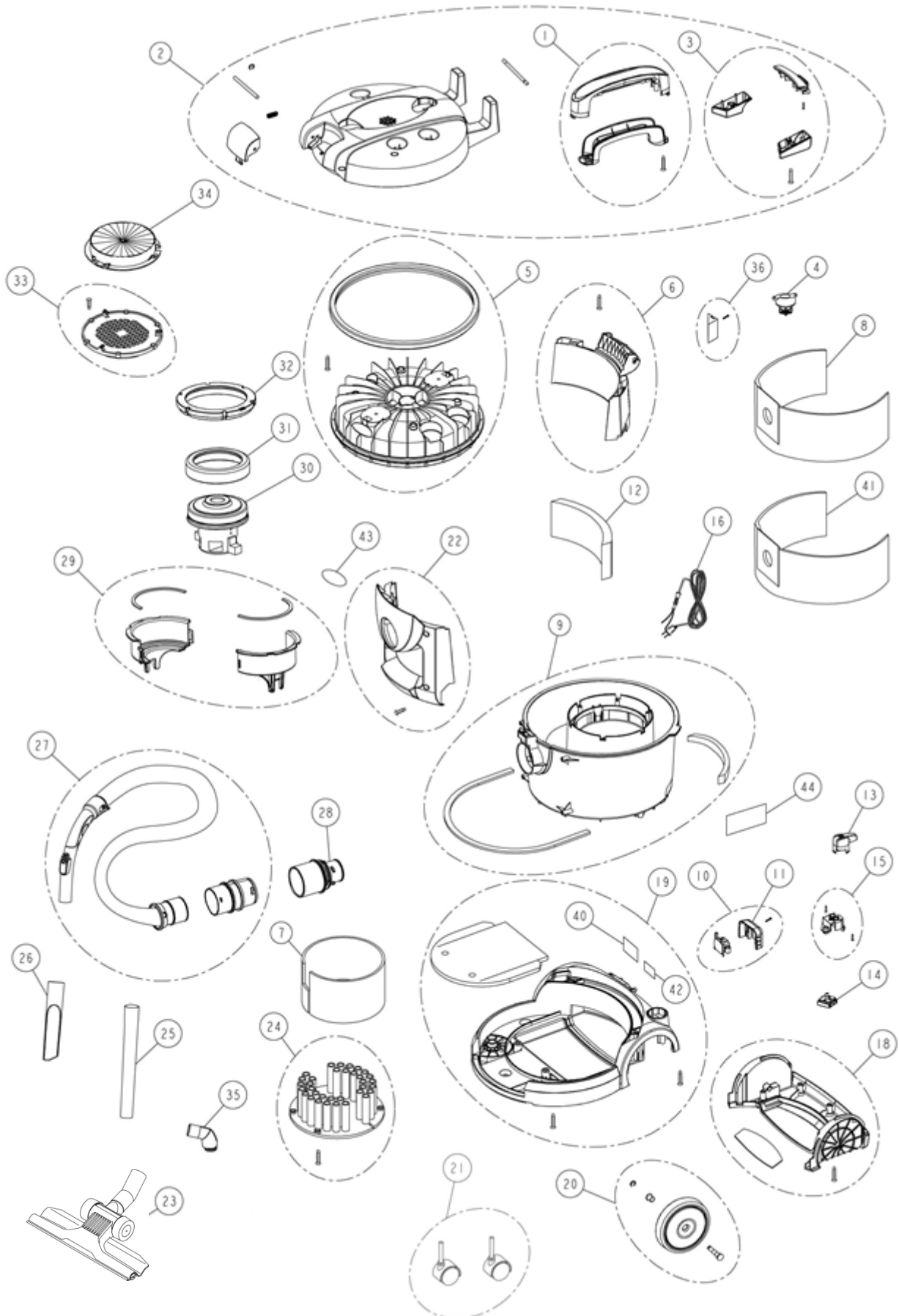




## HEPA



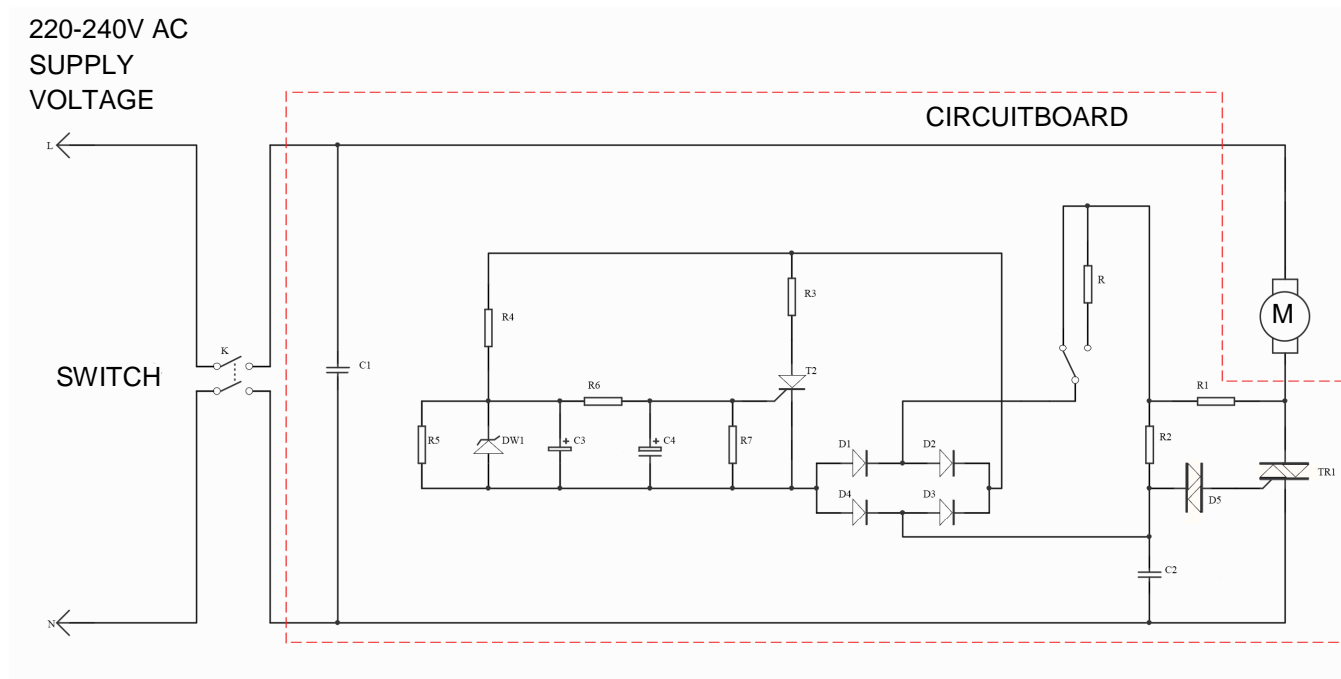
## V6 Parts List



## V6 Parts Lists

Ref.	Part No.	Description	Qty.
1	9009741	HANDLE KIT, REPLMT (Includes 2-ST5x23 Screw)	1
2	9009778	COVER ASSY, KIT, REPLMT (Includes 2-ST5x23 Screw, 2-ST4x20 Screw, 2-ST5x15 Screw)	1
3	9009779	HINGE KIT, COVER, REPLMT (Includes 2-ST4x20 Screw, 2-ST5x15 Screw)	1
4	9009780	VALVE KIT, SAFETY	1
5	9009781	LID KIT, REPLMT (Includes 4-ST5x15 Screw)	1
6	9009782	COVER KIT, OUTLET, AIR (Includes 2-ST5x37 Screw)	1
7	9009783	INSULATION, ACSTC, MOTOR	1
8	9009784	BAG, VACUUM [1PKG=12 BAGS]	1
9	9009785	BODY KIT, REPLMT	1
10	9010857	RETAINER KIT, PLUG (Includes 2-ST4x10 Screw, 2-ST4x16 Screw)	1
11	9009787	RETAINER, PLUG	1
12	9009788	FILTER, AIR, OUTLET	1
13	9009789	SWITCH, BTN	1
14	9009790	SWITCH	1
15	9009791	HOUSING, SWITCH (Includes 2-ST4x16 Screw)	1
16	9010652	CORD ASSY, POWER, YEL [AUS]	1
18	9009796	COVER KIT, BASE, REPLMT (Includes 4-ST5x37 Screw, 1-LZ5x37 Screw)	1
19	9009976	BASE KIT, REPLMT [EU] (Includes 3-ST5x15 Screw, 2-ST5x23 Screw)	1
20	9009798	WHEEL ASSY	1
21	9009799	CASTER ASSY	2
22	9009891	PLATE, SUC, REPLMT (Includes 4-ST5x15 Screw)	1
23	9013472	TOOL, PICKUP, FLOOR, GULPER, 1.25D, 11W	1
24	9009892	INSULATION, ACSTC (Includes 2-ST5x16 Screw, 1-ST3x8 Screw)	1
25	9009770	TUBE, EXTN	1
26	9009769	TOOL, CREVICE	1
27	9009893	HOSE ASSY, REPLMT	1
28	9009894	BODY, SUC, REPLMT	1
29	9009756	HOUSING KIT, MOTOR, OUTER, REPLMT	1
30	9009754	MOTOR, VACUUM, REPLMT, 230V	1
31	9009758	SEAL KIT, MOTOR, LOWER	1
32	9009759	SEAL KIT, MOTOR HSNG, OUTER	1
33	9009761	GRILL, AIR, INLET (Includes 6-ST4x16 Screw)	1
34	9009775	FILTER, HEPA	1
35	9009771	TOOL, BRUSH, DUST	1
36	9009970	TOOL HOLDER KIT (Includes 1-ST5x15 Screw)	1
40	993852	LABEL, WARNING [ELECTRICAL HAZARD]	1
41	9009895	BAG, CLOTH	1
42	1071202	LABEL, SAFETY [READ MANUAL ICON]	1
43	1071196	LABEL, LOGO, 03.375L WHT/TL [TENNANT]	1
44	1071198	LABEL, MODEL [V6]	1
Not shown	9009896	CIRCUITBOARD [230V]	1

## Electrical Diagram



## Recommended Spare Parts

V6	
9009784	BAG, VACUUM [1PKG=12 BAGS]
9009775	FILTER, HEPA
9009893	HOSE ASSY
9009769	TOOL, CREVICE
9009771	TOOL, BRUSH, DUST
9013472	TOOL, PICKUP, FLOOR, GULPER, 1.25D, 11W
9010652	CORD ASSY, POWER, YEL [AUS]
9009895	BAG, CLOTH (OPTION)